

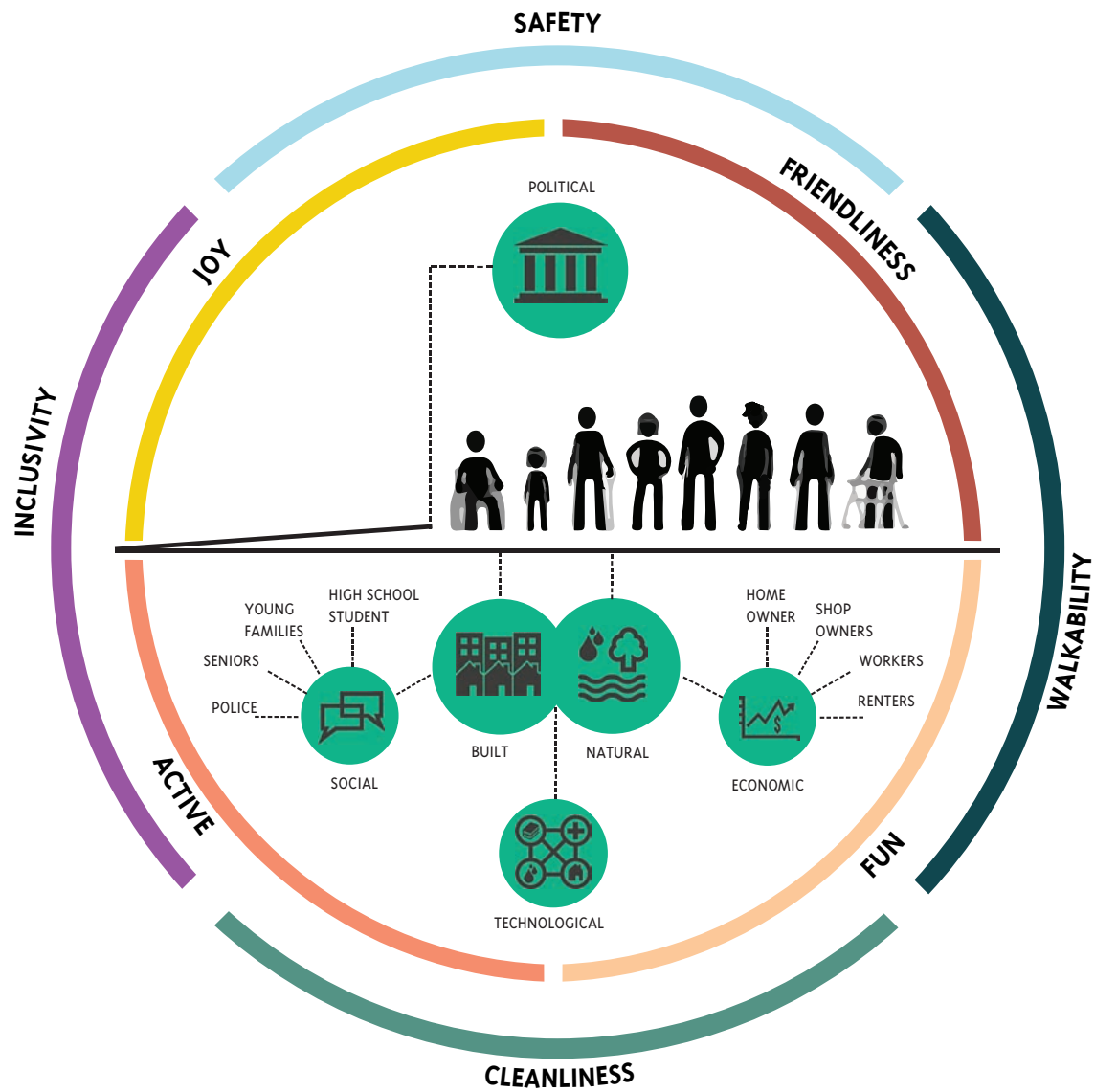
**“The best way to predict
your future is to create it.”
- Abraham Lincoln**



HALF-WAY MICH







East Detroit High

P

Box Restaurants

Children's Garden

P

Farmer's Market

Library

Multi-Use Area

P

Boxshops

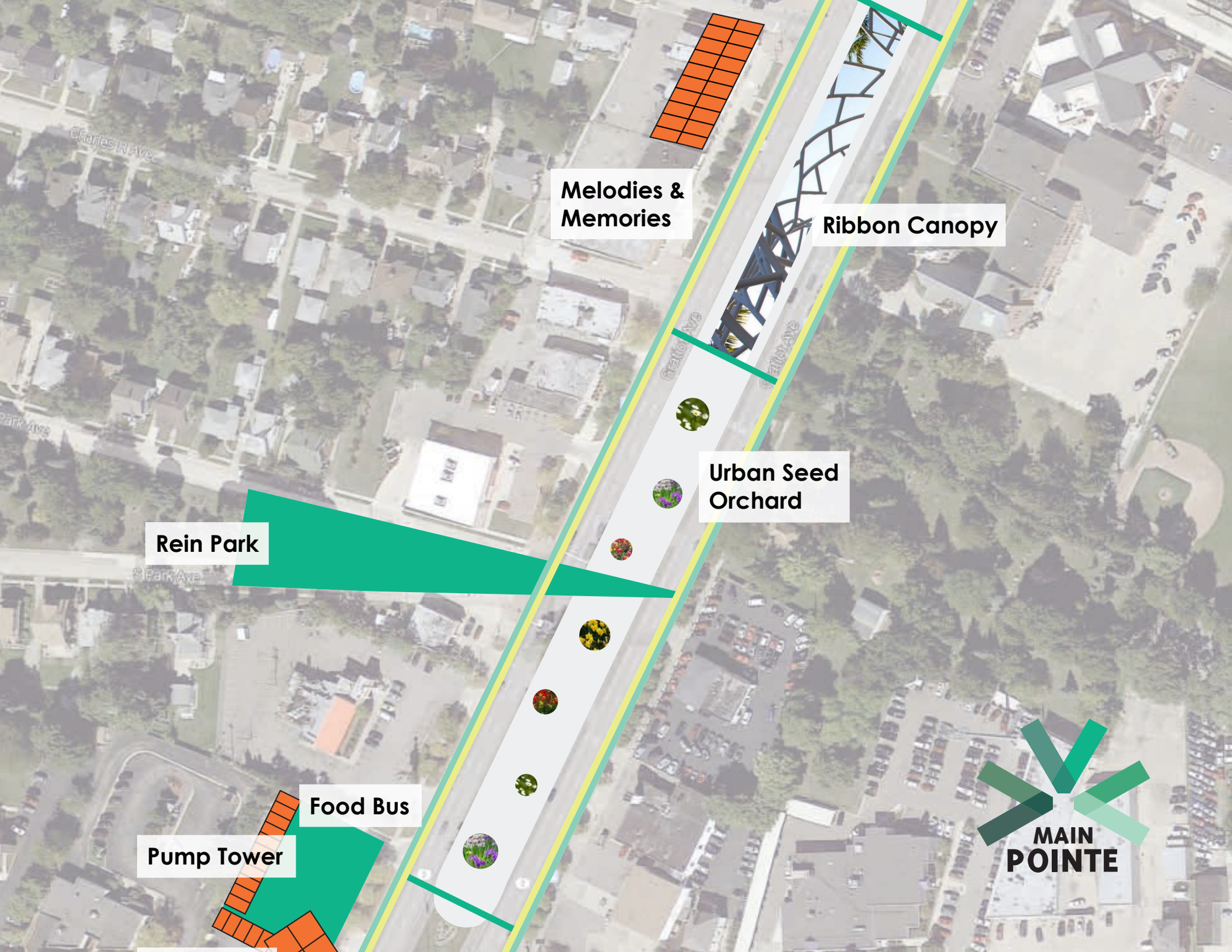


25

SHAMROCK SHOP

24





Melodies & Memories

Ribbon Canopy

Urban Seed Orchard

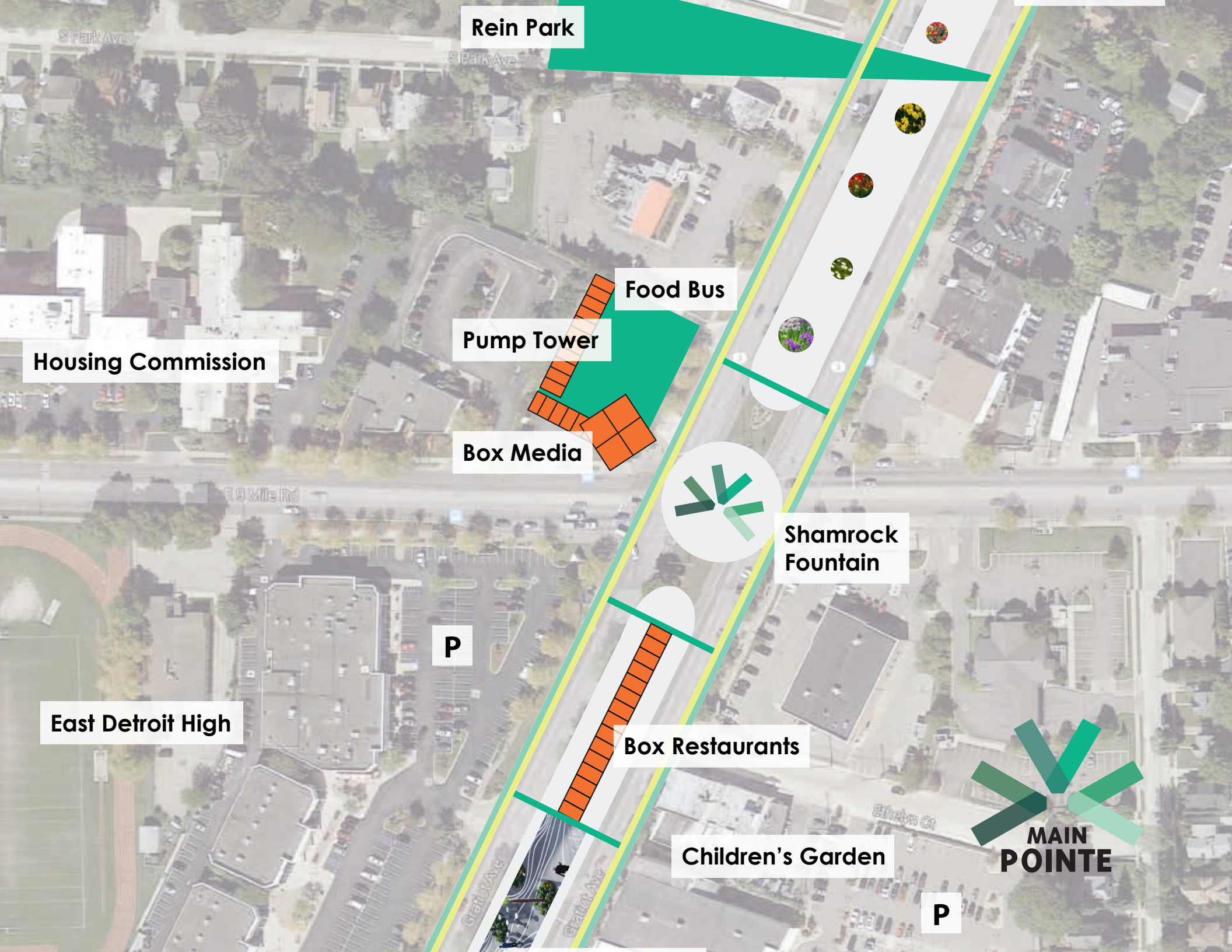
Rein Park

Food Bus

Pump Tower







Rein Park

Housing Commission

Food Bus

Pump Tower

Box Media

Shamrock Fountain

P

East Detroit High

Box Restaurants

Children's Garden

P

MAIN
POINTE









Measures of success

Jobs

New businesses

New office space

Lowered Vacancy rate

Additional funding for community Police Force

New Revenue streams (Parking, Commercial tax)

High School student 'externships'

Increased pedestrian traffic and community activities



Thank you