



LIVING BRIDGE

A foundation of opportunities

Toronto



1924 The Godson House



Today

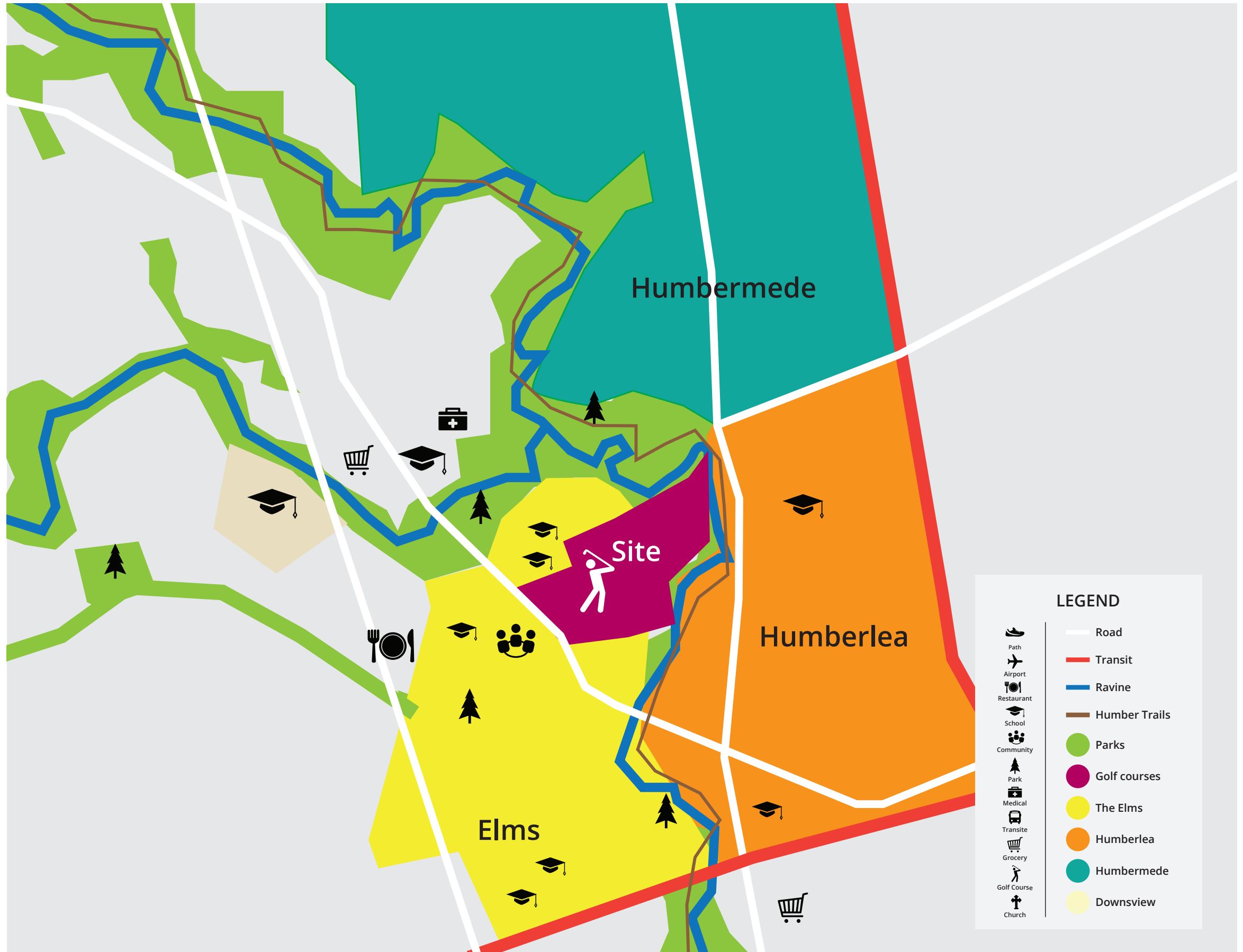
Humber Valley Golf Club





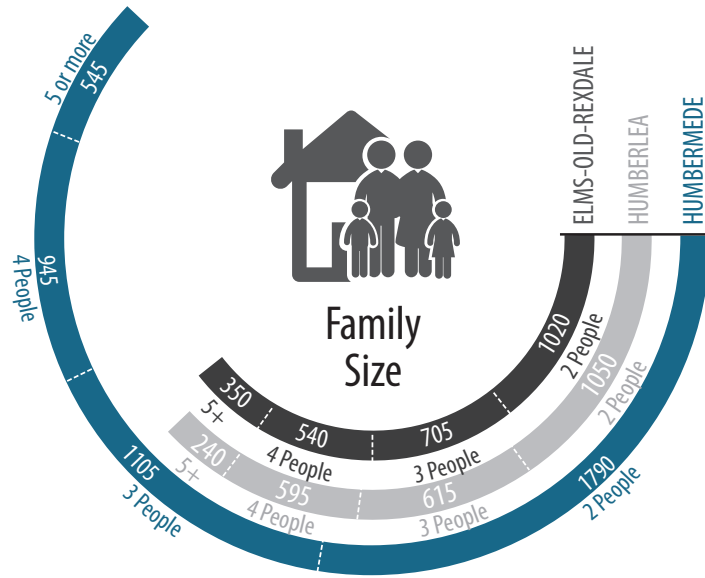
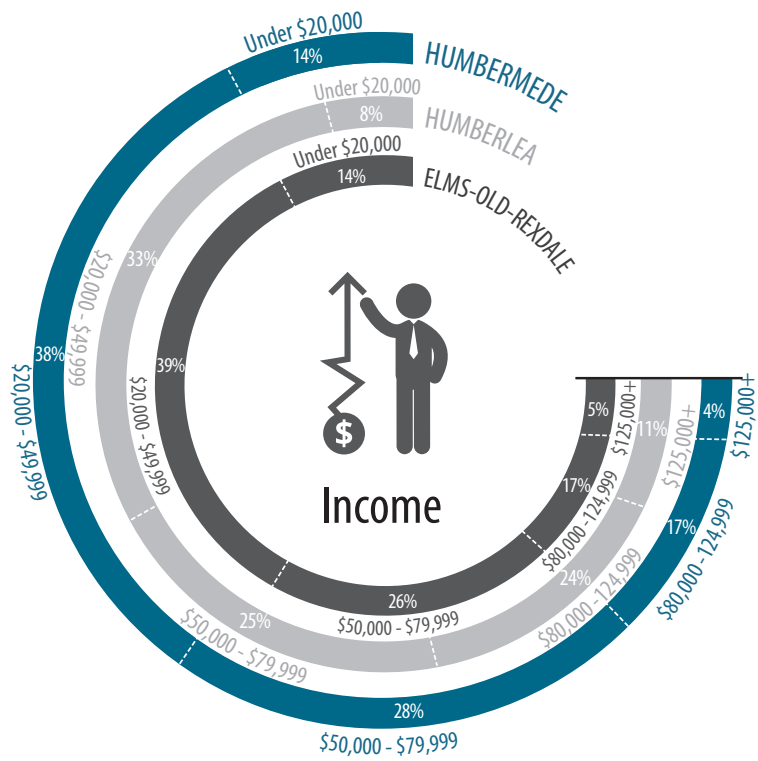
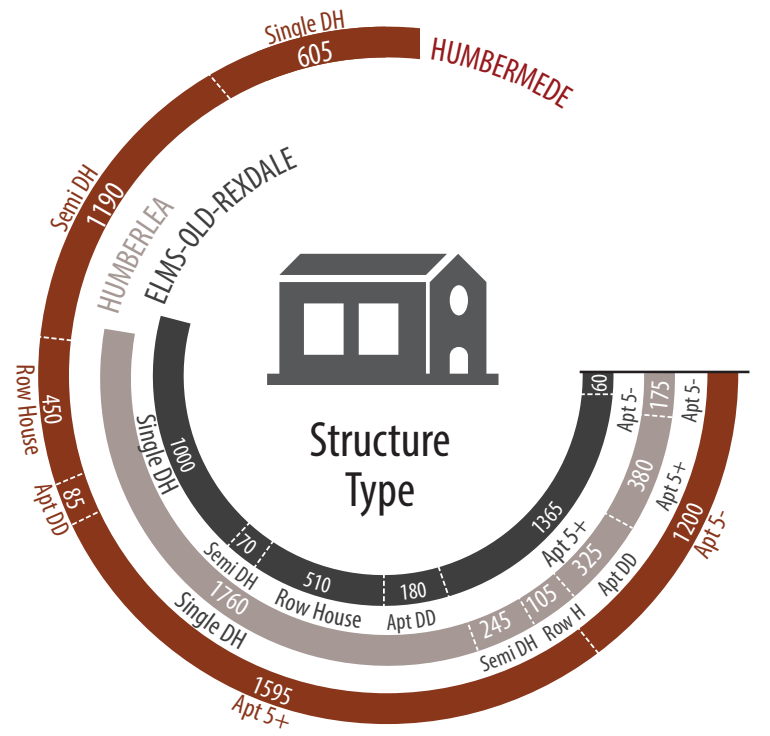
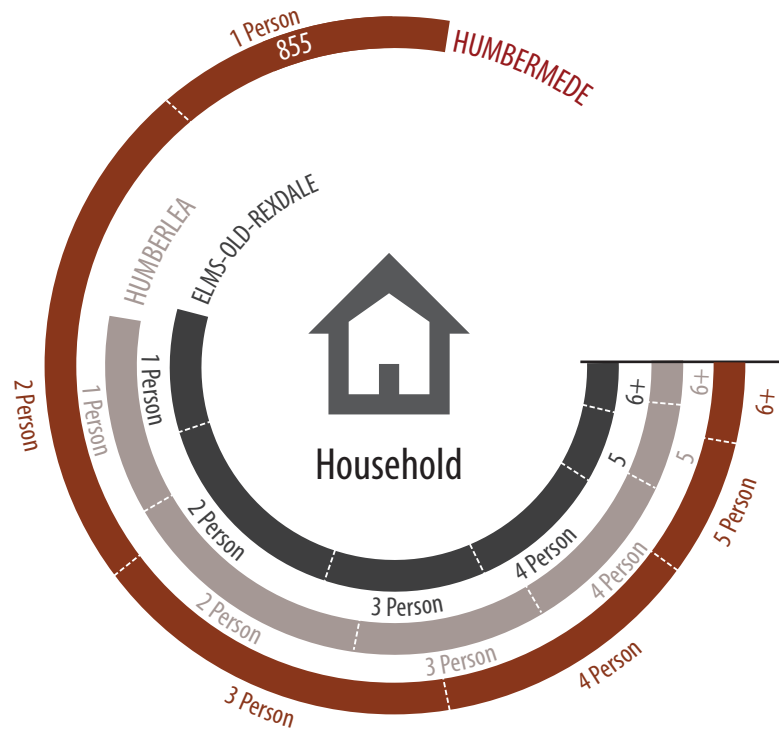
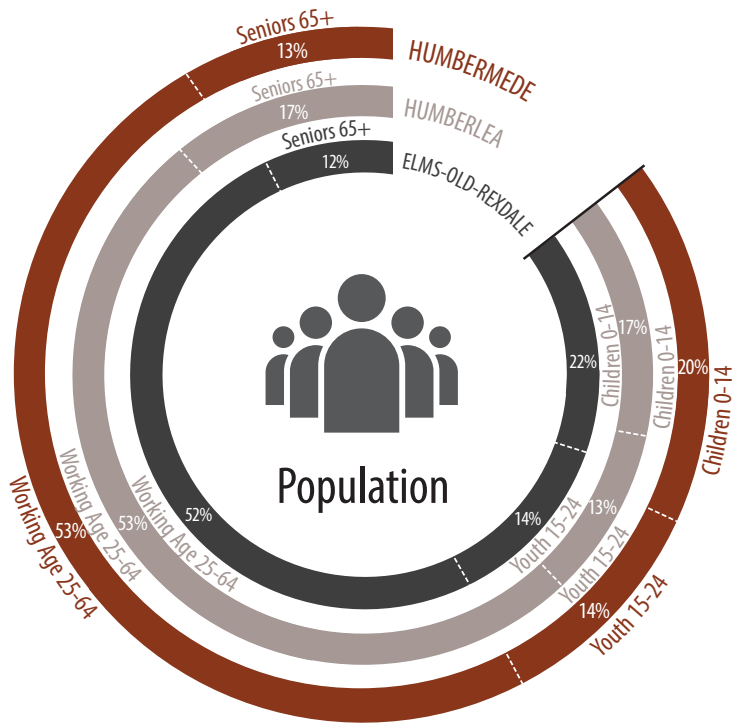
LEGEND

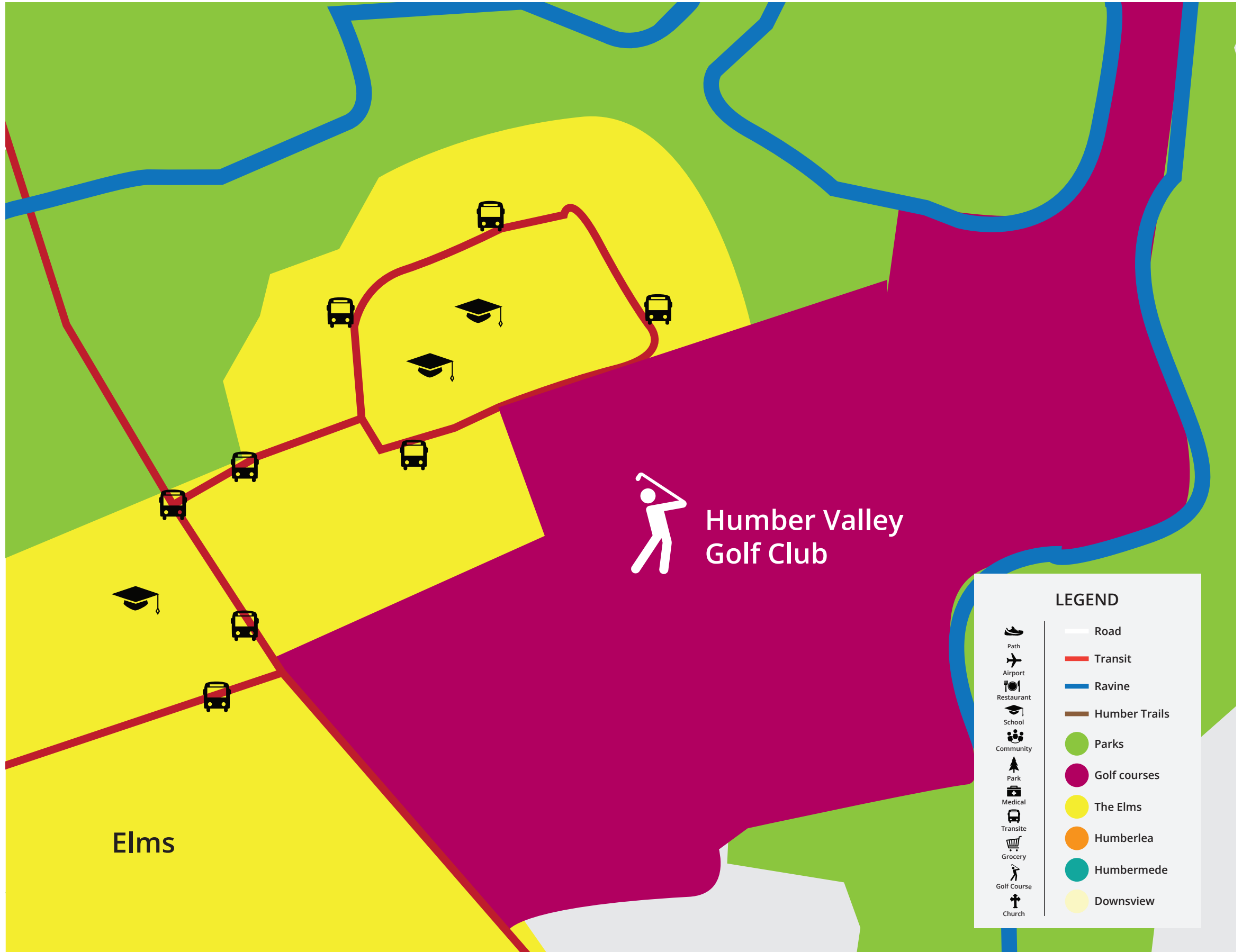
- | | |
|--|---------------|
| | Road |
| | Transit |
| | Ravine |
| | Humber Trails |
| | Parks |
| | Golf courses |
| | The Elms |
| | Humberlea |
| | Humbermede |
| | Downsview |
-
- | | |
|--|-------------|
| | Path |
| | Airport |
| | Restaurant |
| | School |
| | Community |
| | Park |
| | Medical |
| | Transit |
| | Grocery |
| | Golf Course |
| | Church |



LEGEND

-  Road
 -  Transit
 -  Ravine
 -  Humber Trails
 -  Parks
 -  Golf courses
 -  The Elms
 -  Humberlea
 -  Humbermede
 -  Downsview
-  Path
 -  Airport
 -  Restaurant
 -  School
 -  Community
 -  Park
 -  Medical
 -  Transite
 -  Grocery
 -  Golf Course
 -  Church





Humber Valley
Golf Club

Elms

LEGEND

- Road
- Transit
- Ravine
- Humber Trails
- Parks
- Golf courses
- The Elms
- Humberlea
- Humbermede
- Downsview
- Path
- Airport
- Restaurant
- School
- Community
- Park
- Medical
- Transite
- Grocery
- Golf Course
- Church

Vision

A bridge connecting communities over the Humber river, both physically and socially, while serving as the foundation for affordable housing, and useful spaces.



LIVING BRIDGE

A foundation of opportunities

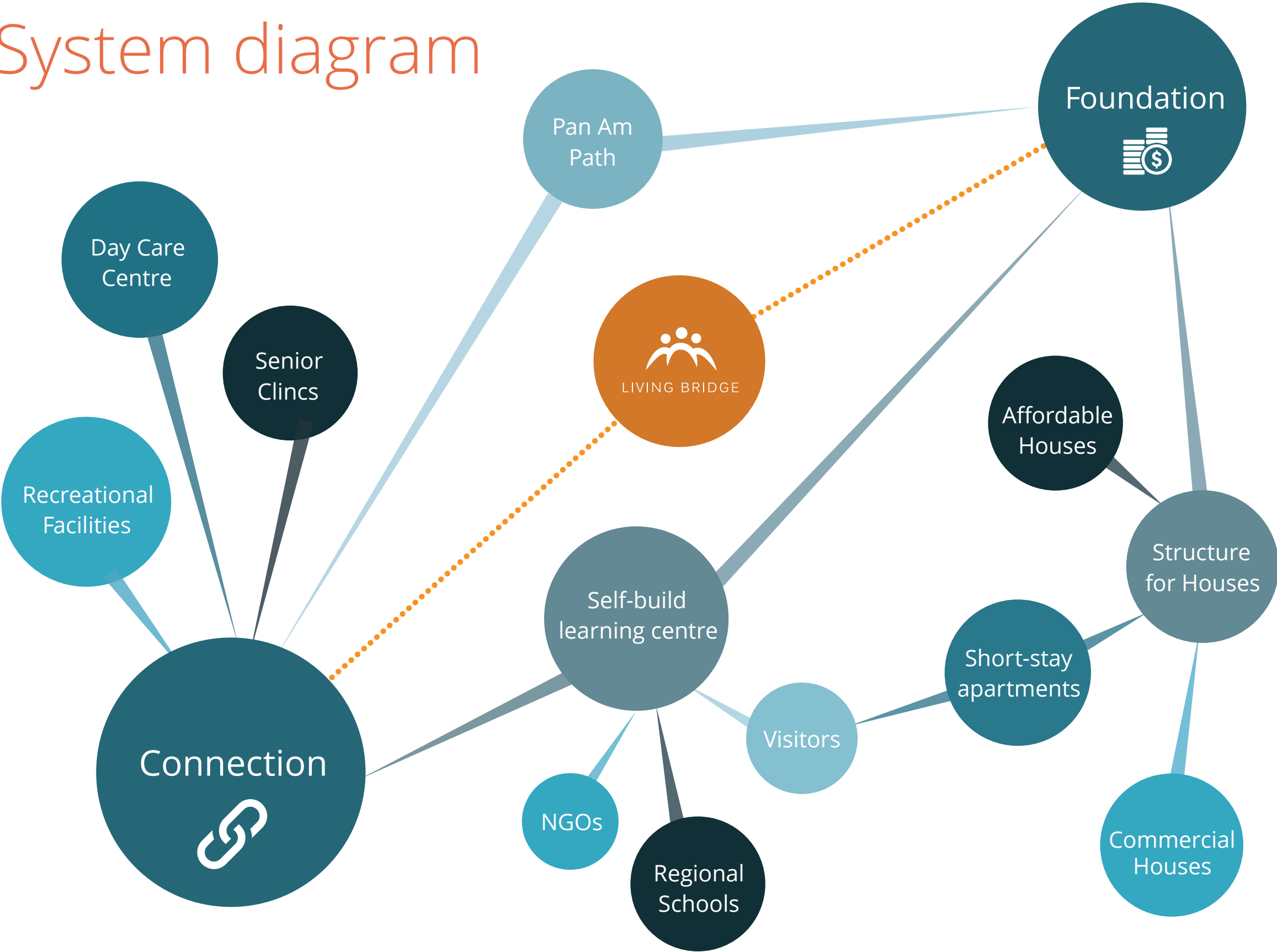




NGO



System diagram



FAMILY 1

Erica: 35 yrs, waitress

Thomas: 9 yrs

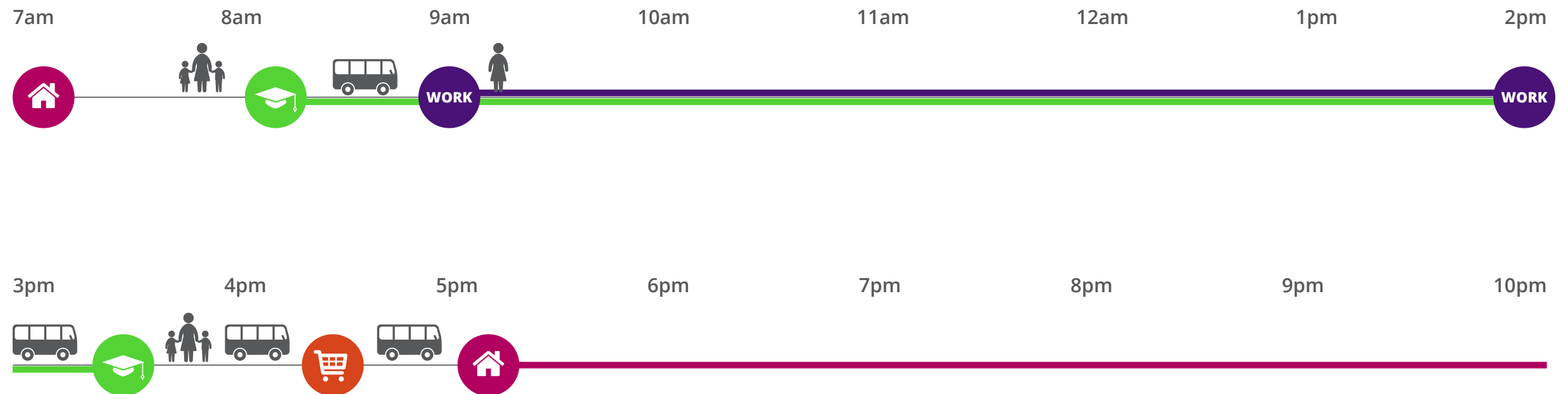
Jenny: 5 yrs

Single-mother

Low income

Apartment rental

No car



FAMILY 2

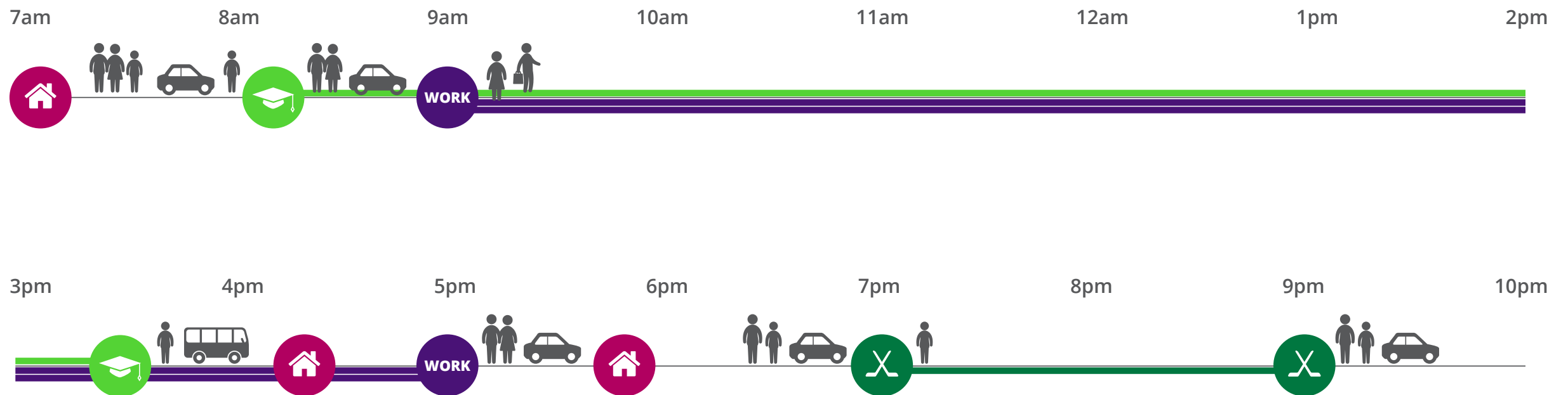
Jeremy: 45 yrs, Business manager

Crystal: 40 yrs, Production line

Dylan: 16 yrs

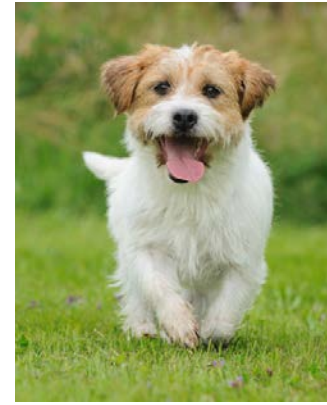


Middle income
Semi-detached home owners
Downtown commuters
1 car

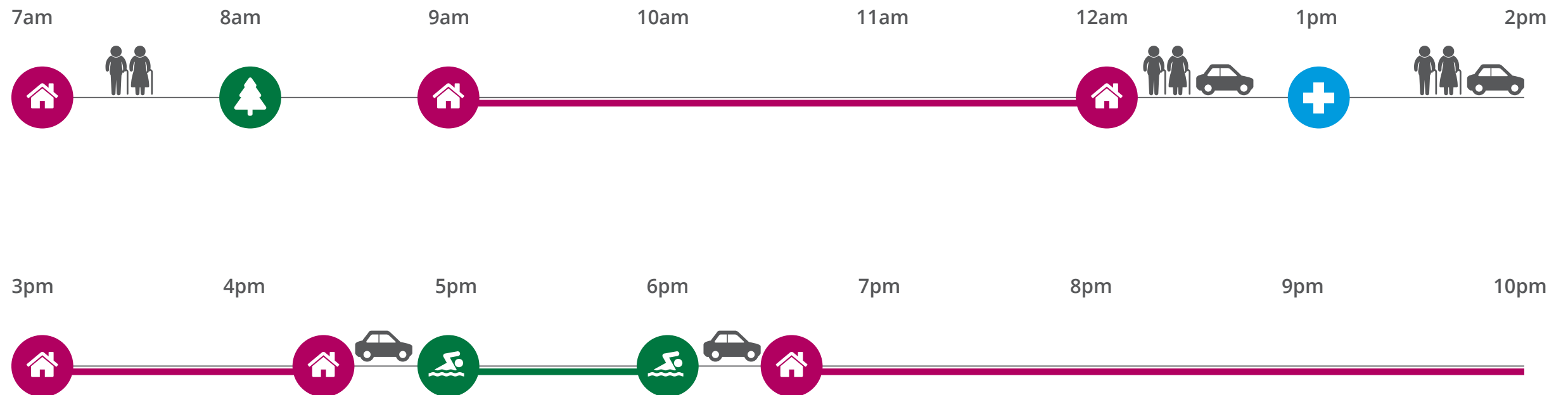


FAMILY 3

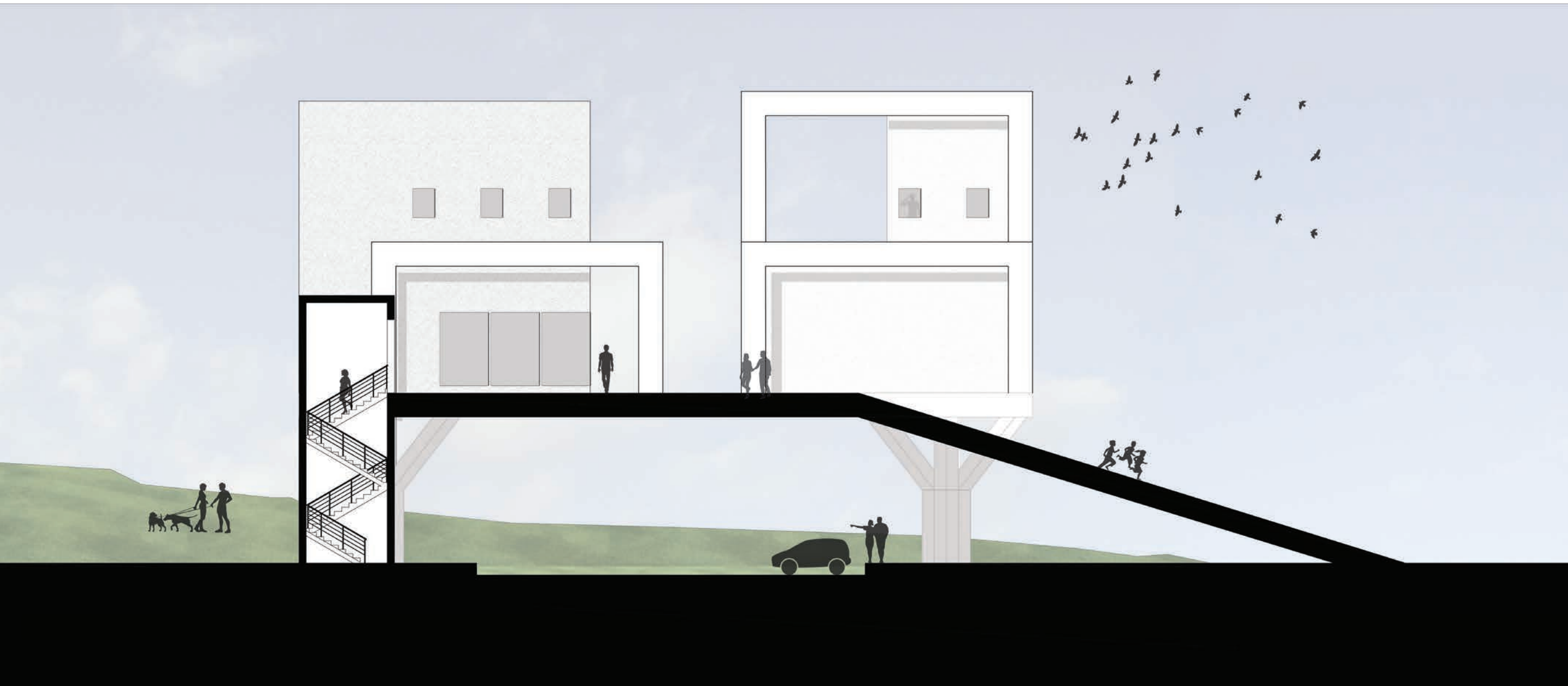
Charlie: 78, Retired
Sharon: 74, Retired
Coco: Small dog



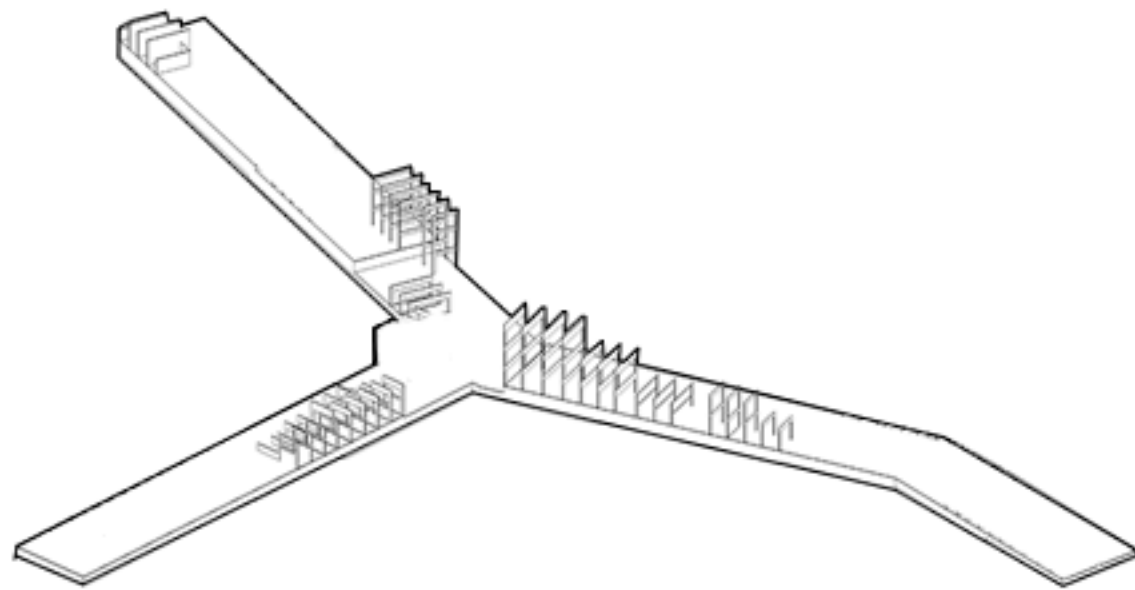
High income
Bungalow home owners
Health conditions
1 car



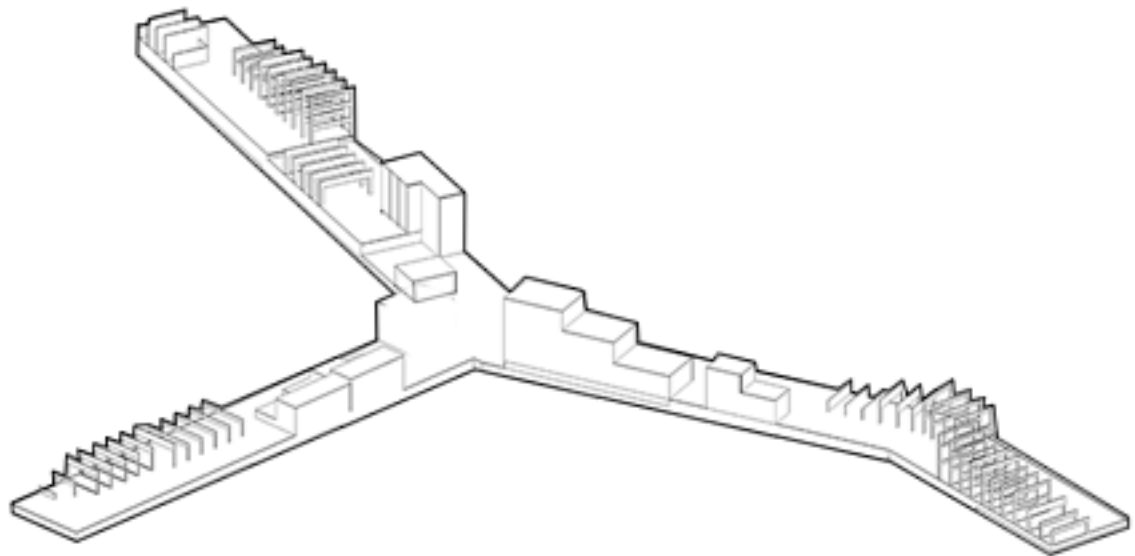




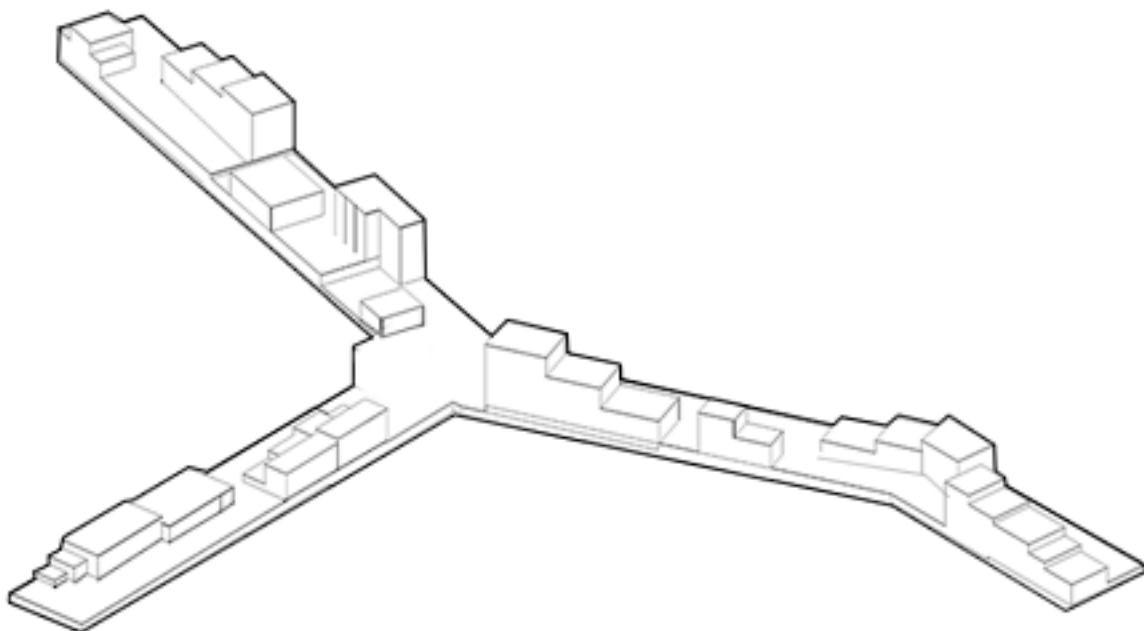




Phase 1
Bridge Structure

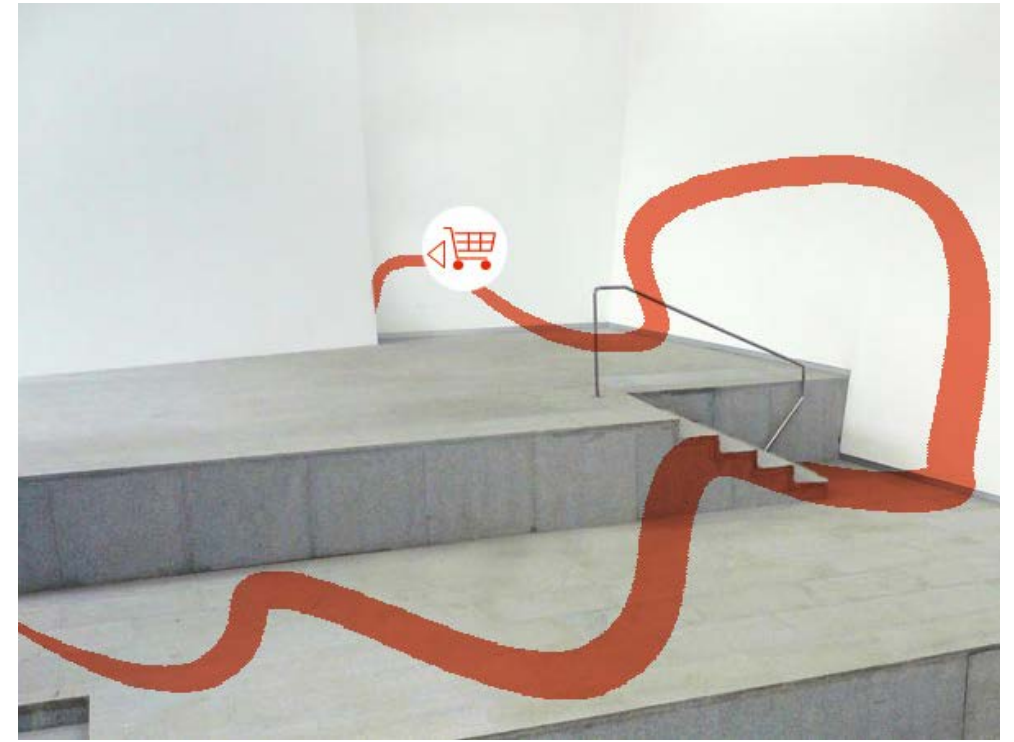


Phase 2
Day care
Senior Clinic

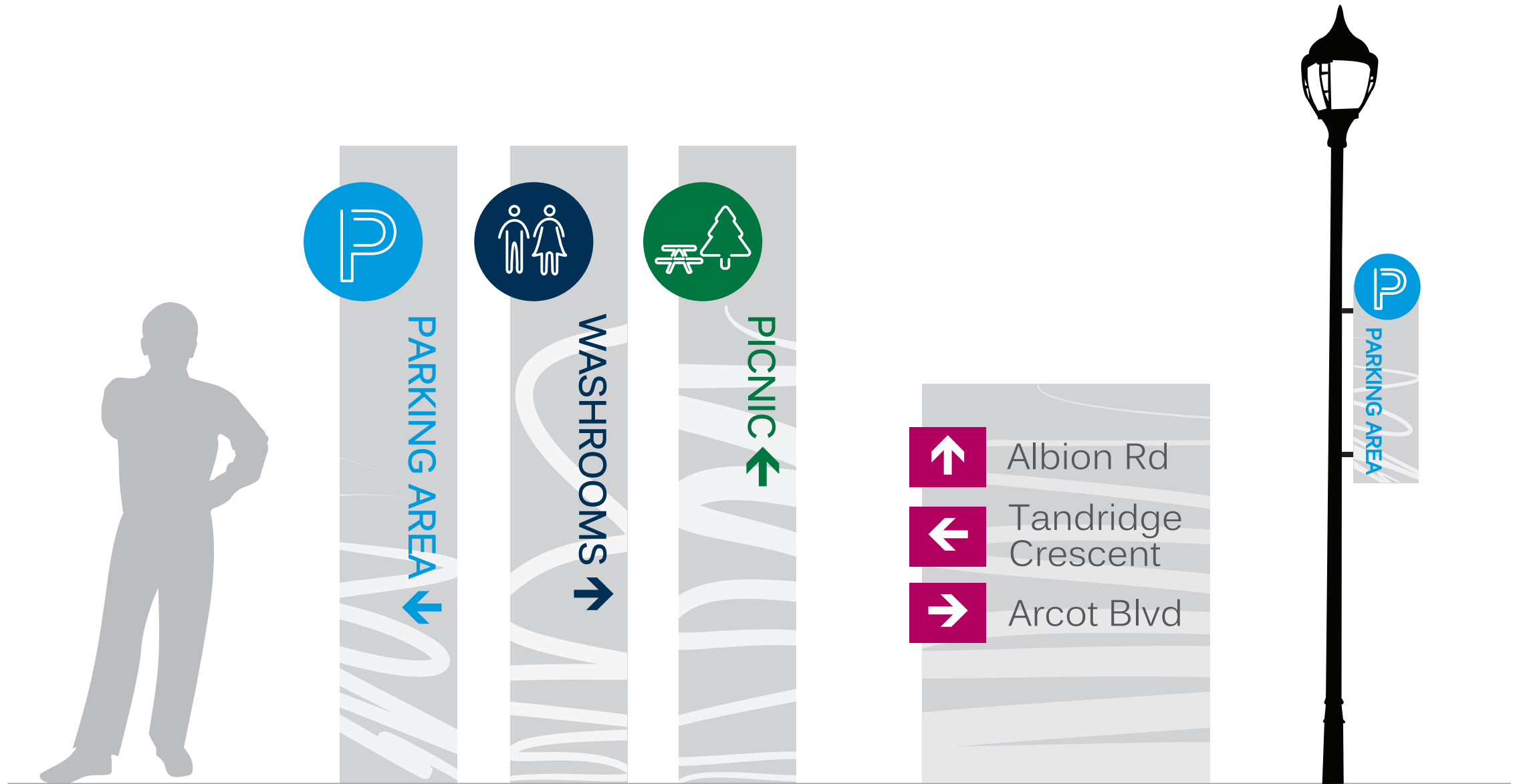


Phase 3
Self-build initiatives
e.g. Habitat for Humanity

Wayfinding



Wayfinding







Thank you

Haotian Liu

Stephanie Shin

Shirin Esmaili

Nerin Li

Sophie Lafay

Raphael Juliano

German Marroquin Najarro

Guilia Chiara Caganoni



LIVING BRIDGE

A foundation of opportunities