



TEAM 16



expo
2025

SINERGY AND EVOLUTION



The 2025 world expo is an opportunity to improve local and be a catalyst to improve the region. Responsive design means to be adaptable in time responding to the challenges of the future.

GLOBAL COUNTRIES / COLLABORATION

REGIONAL TRANSPORTATION

LOCAL RESPONSIVE DESIGN

COLLABORATION TO IMPROVE LOCAL

GLOBAL

GREG

REGIONAL

RACHEL

LOCAL

LAUREN



KNOWLEDGE

+



LOCAL-REUSABLE
MATERIALS



NEW CONCEPT OF EXPO



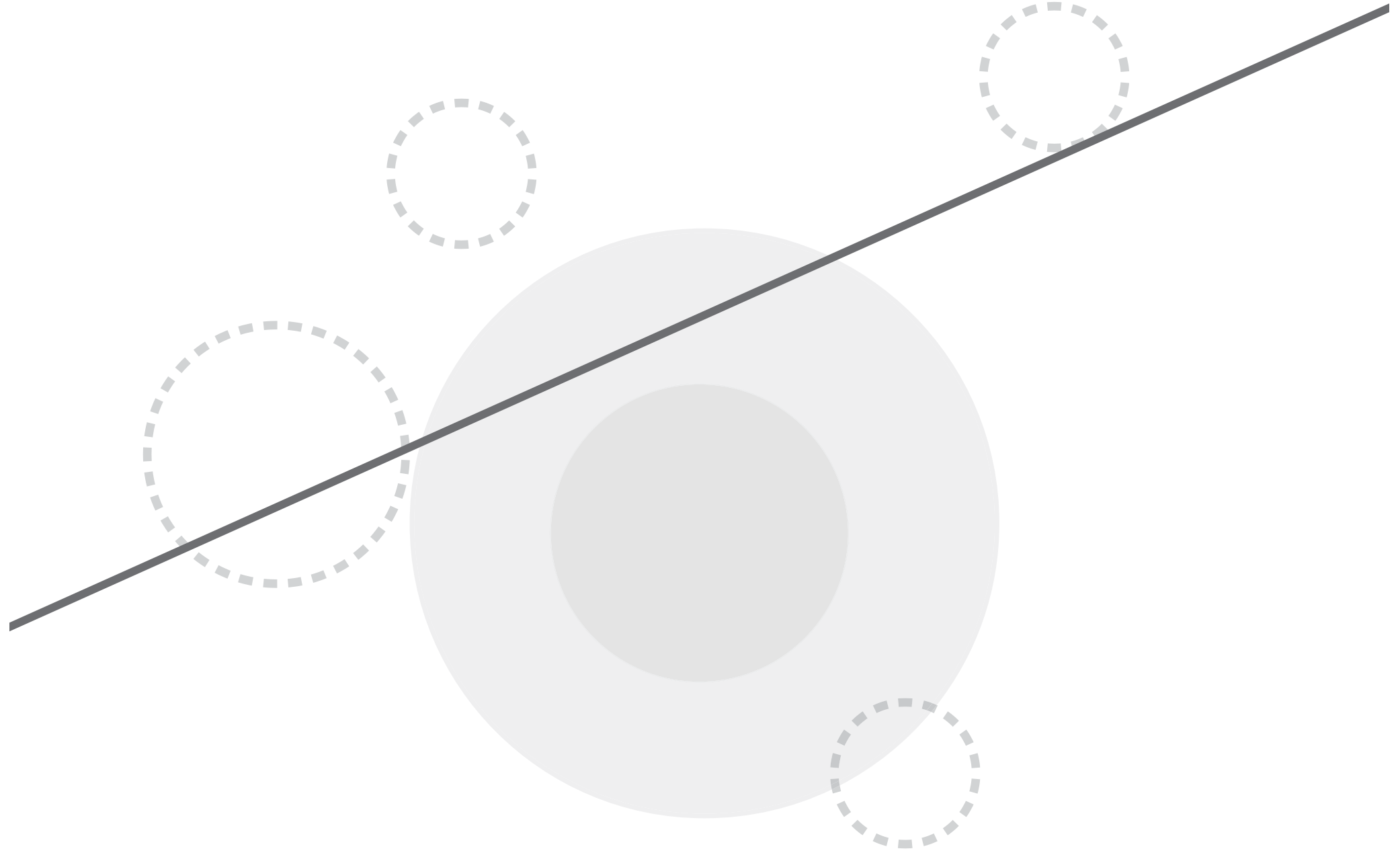
● AIRPORT CONNECTING GLOBAL

● LOCAL. HEARTLAND.

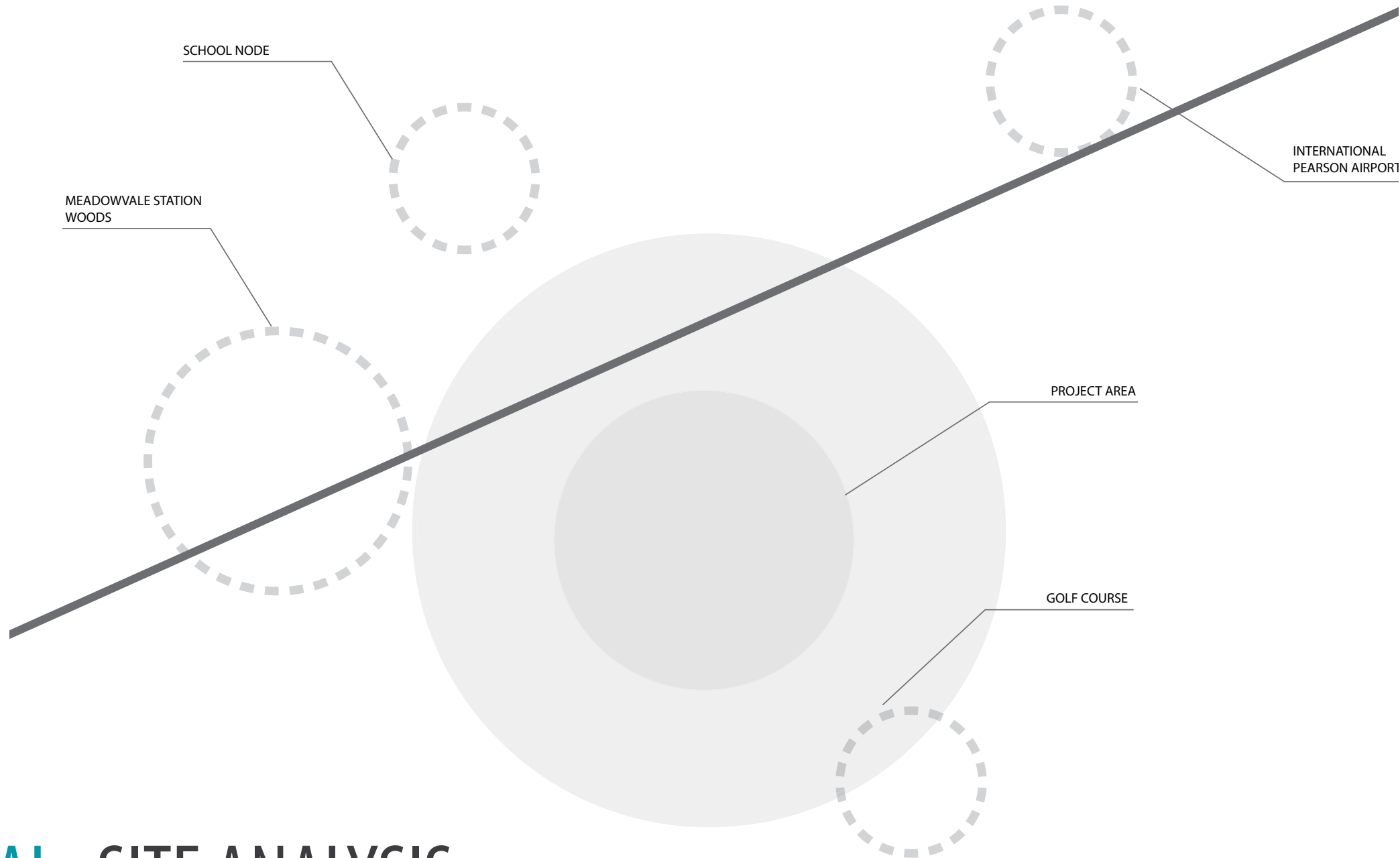


LAURA HOME •

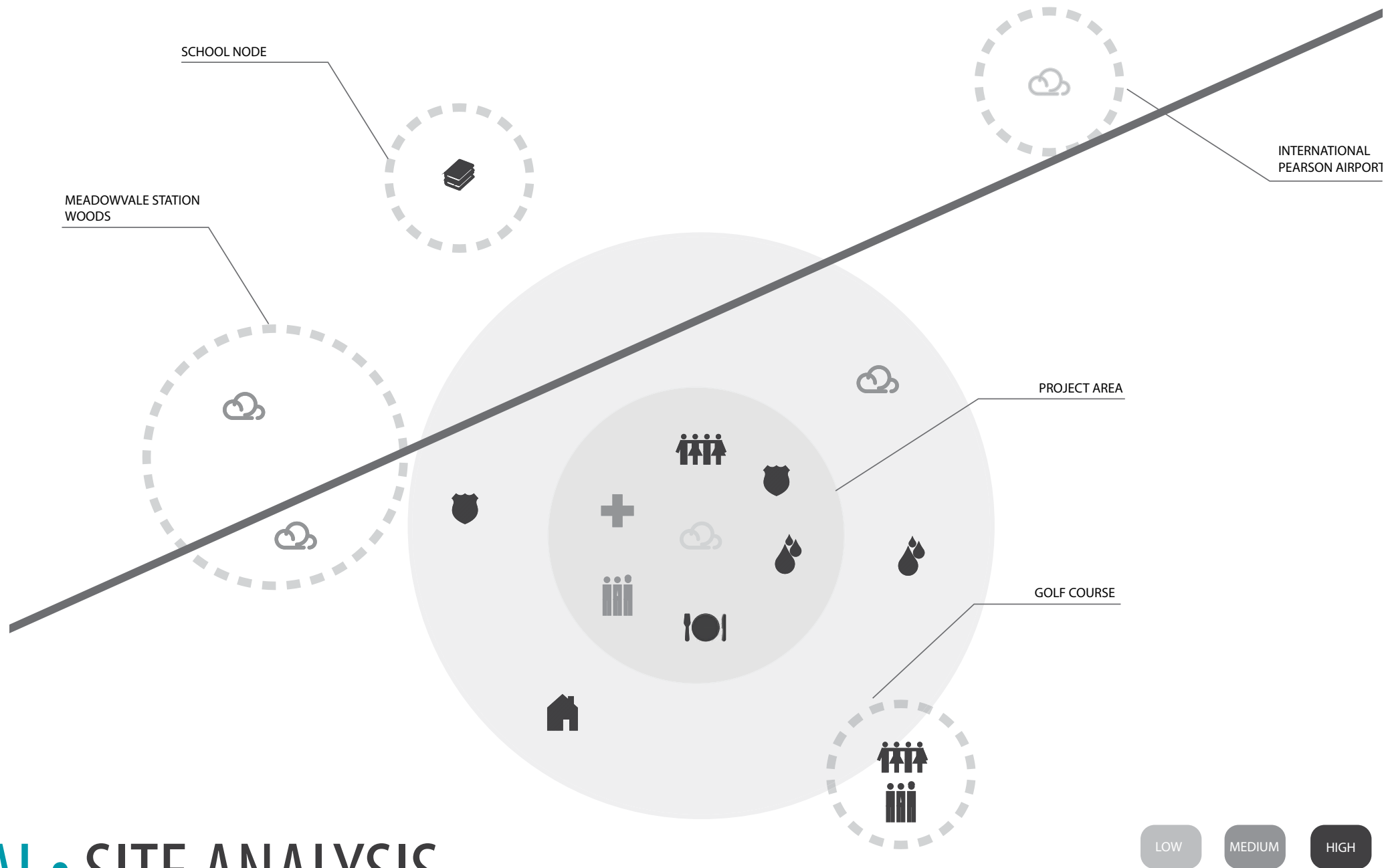
LOCAL • OUR SITE



LOCAL • SITE ANALYSIS

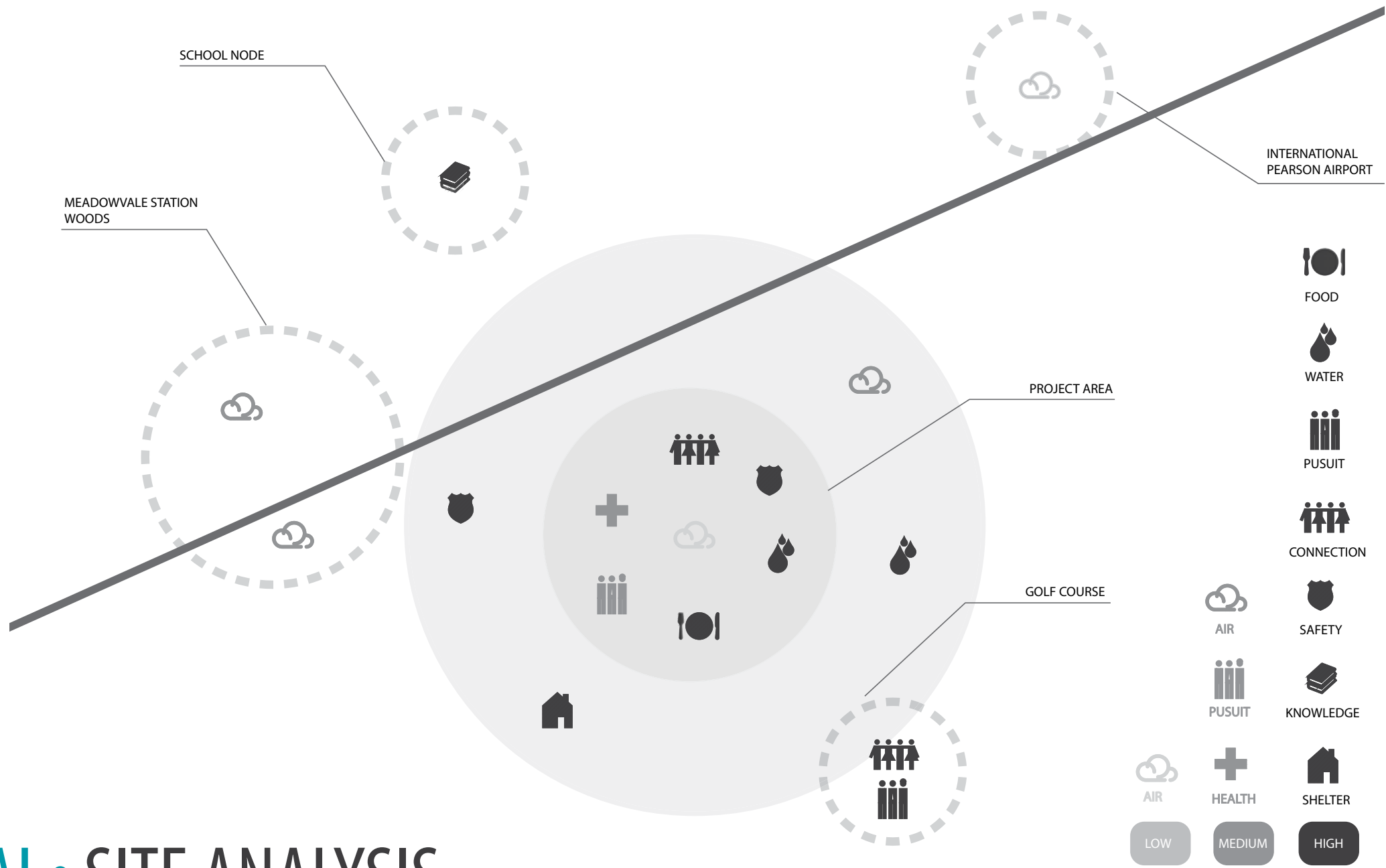


LOCAL • SITE ANALYSIS



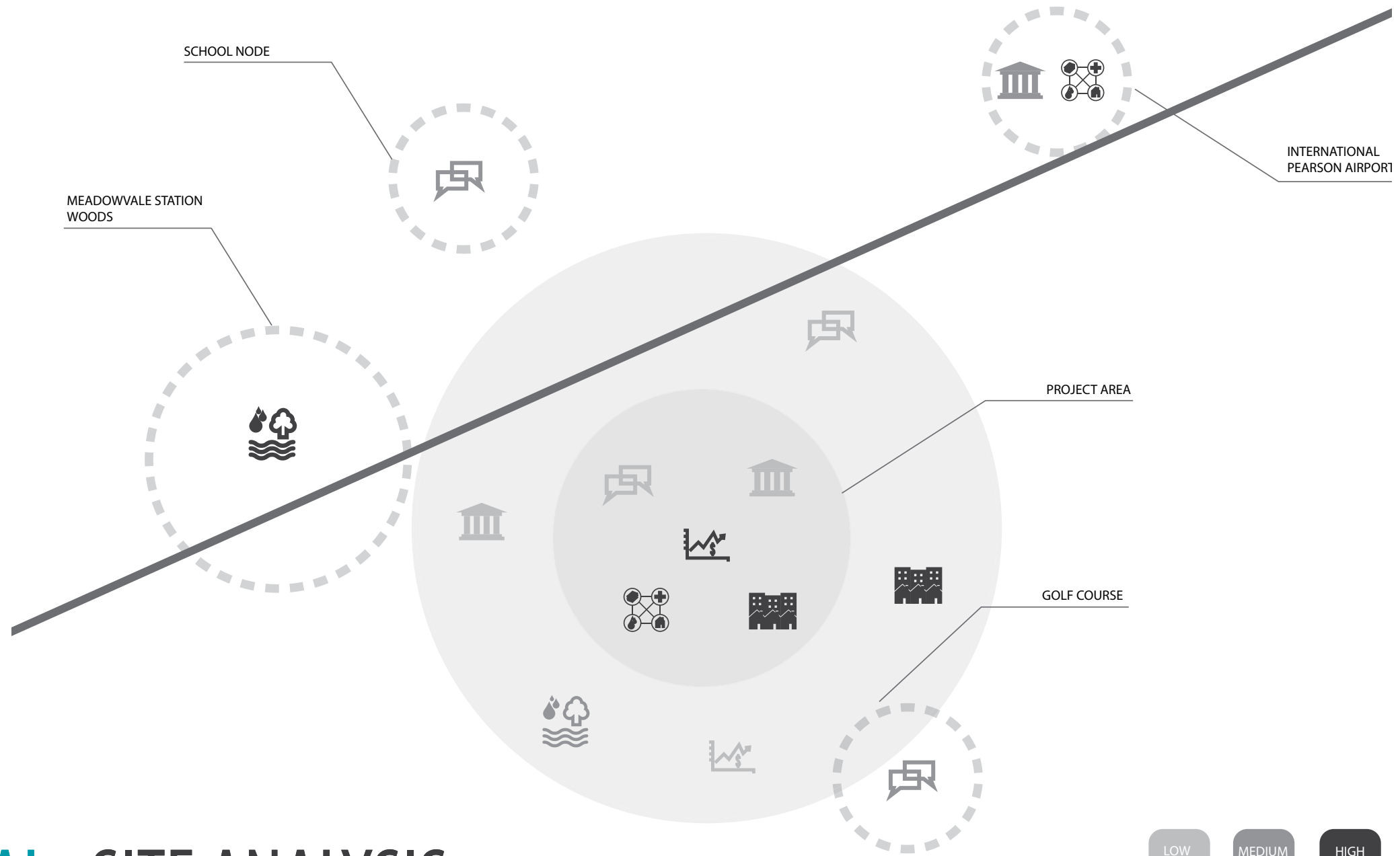
LOCAL • SITE ANALYSIS

VITAL ELEMENTS



LOCAL • SITE ANALYSIS

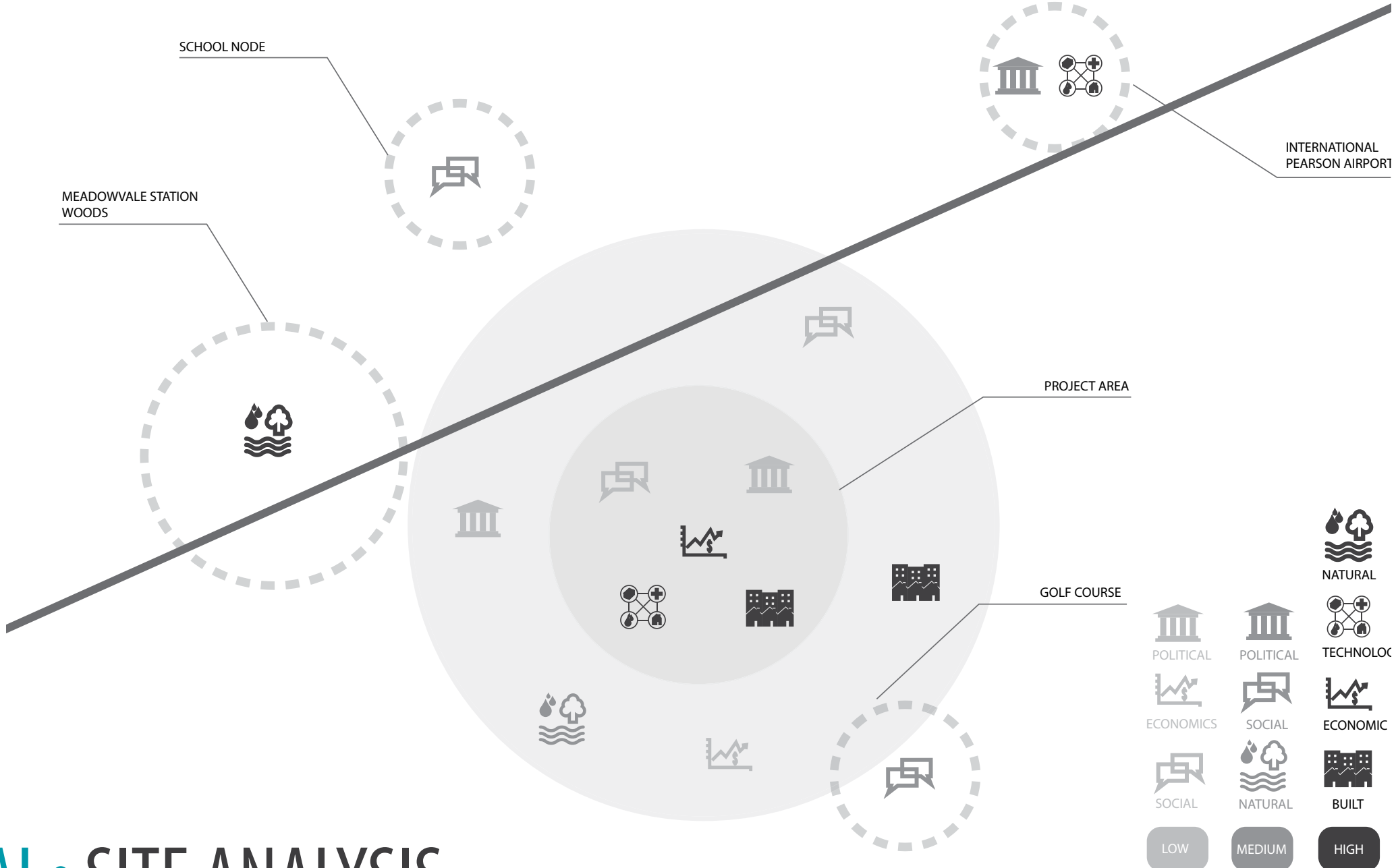
VITAL ELEMENTS



LOCAL • SITE ANALYSIS

SYSTEMS OF INFRASTRUCTURE

LOW MEDIUM HIGH



LOCAL • SITE ANALYSIS

SYSTEMS OF INFRASTRUCTURE

NO SENSE OF COMMUNITY
NOT HEALTHY ENVIRONMENT
NO EASY ACCESS TO TRANSIT

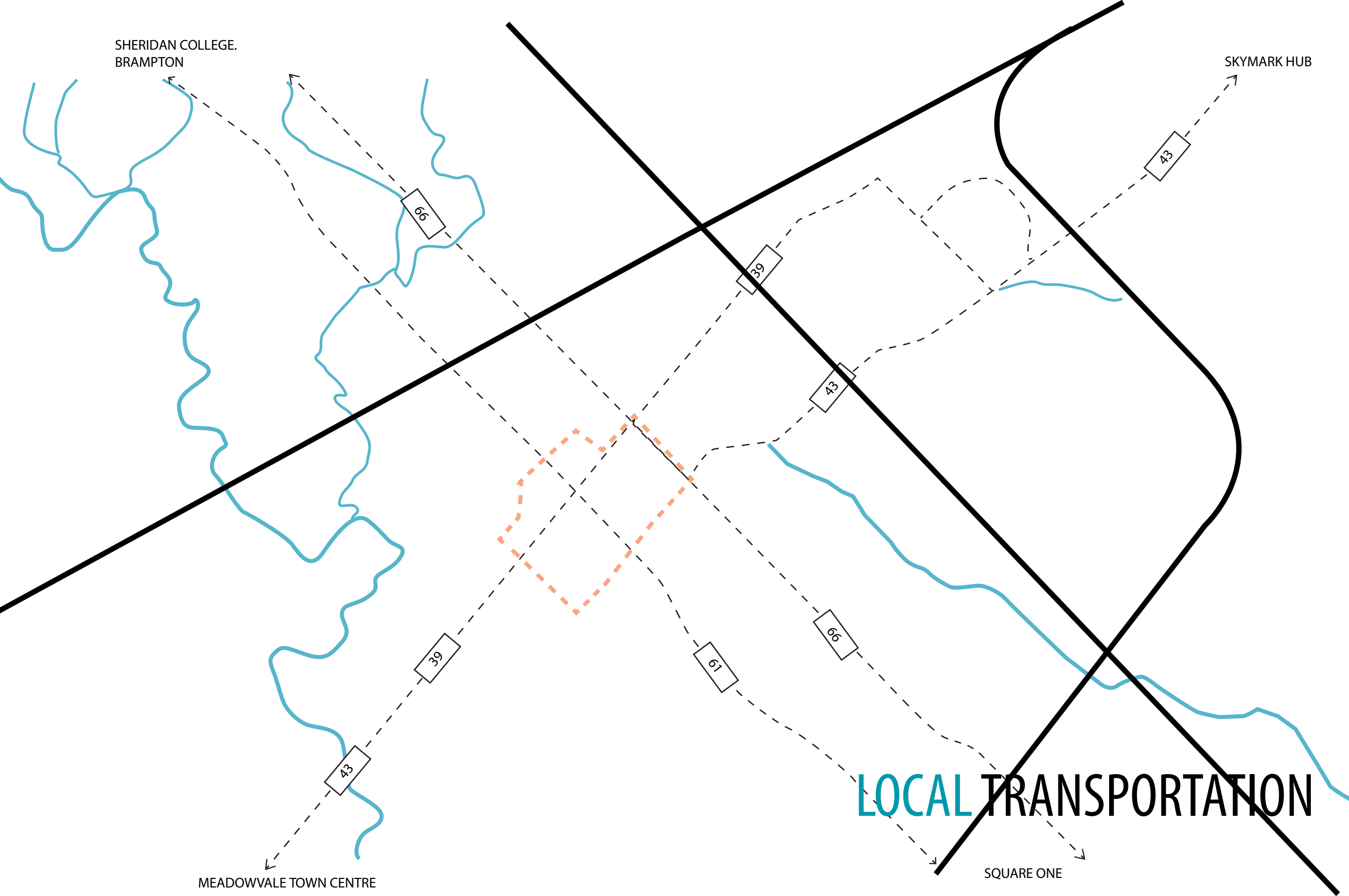
LOCAL • LAURA

REGIONAL TRANSPORTATION

LOCAL

SHERIDAN COLLEGE.
BRAMPTON

SKYMARK HUB



MEADOWVALE TOWN CENTRE

SQUARE ONE

REGION RACHEL HOME

BRAMPTON

AIRPORT

401

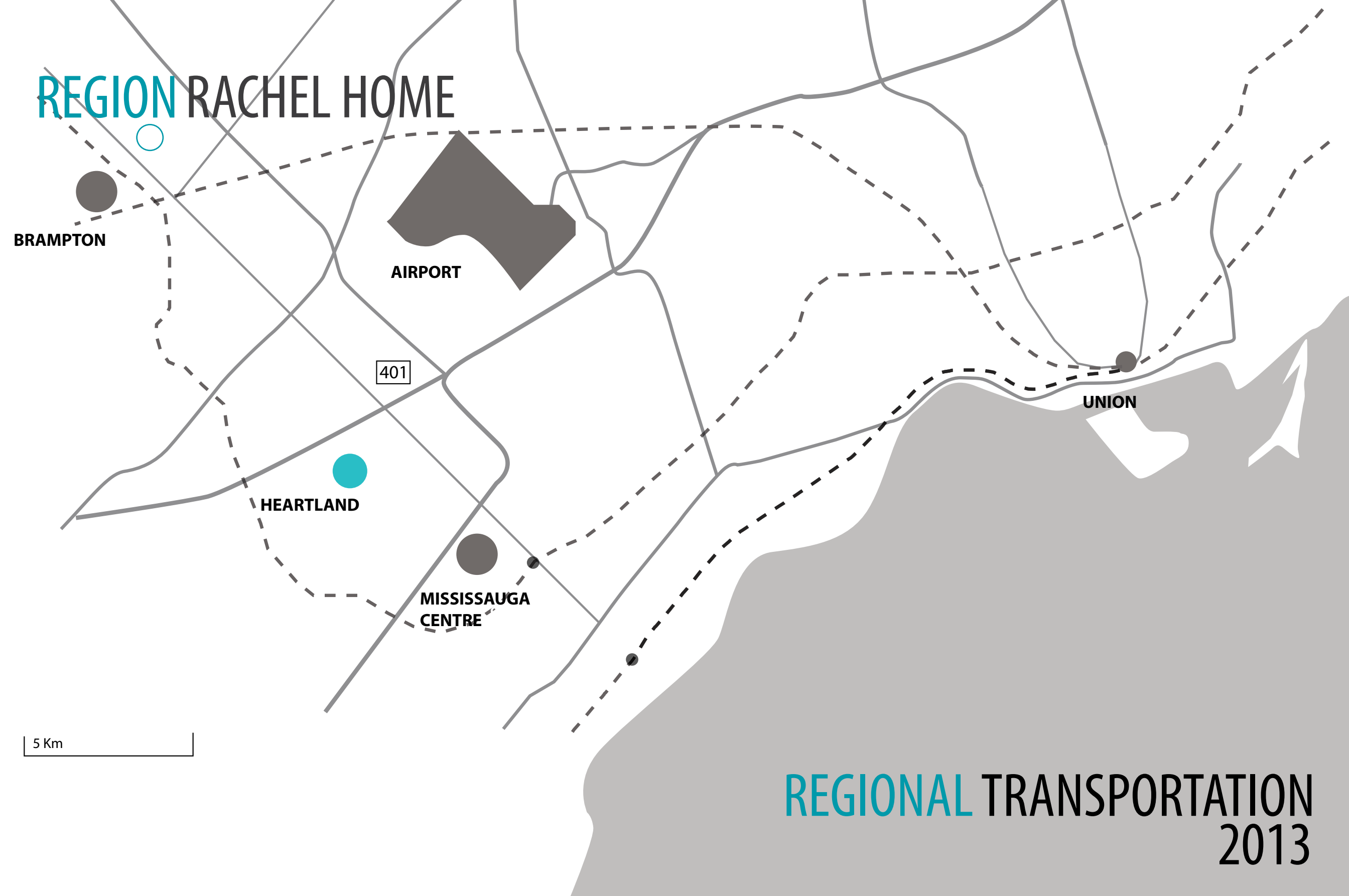
HEARTLAND

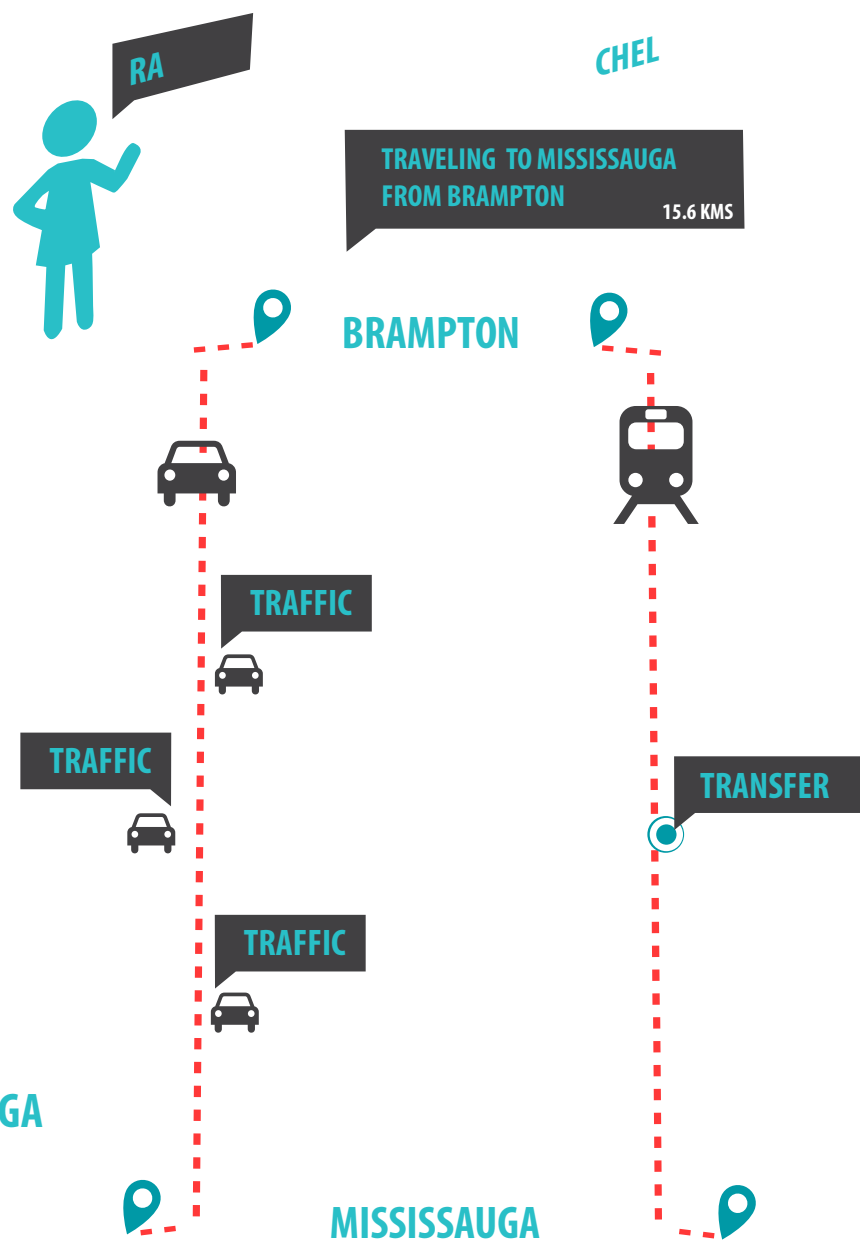
MISSISSAUGA
CENTRE

UNION

5 Km

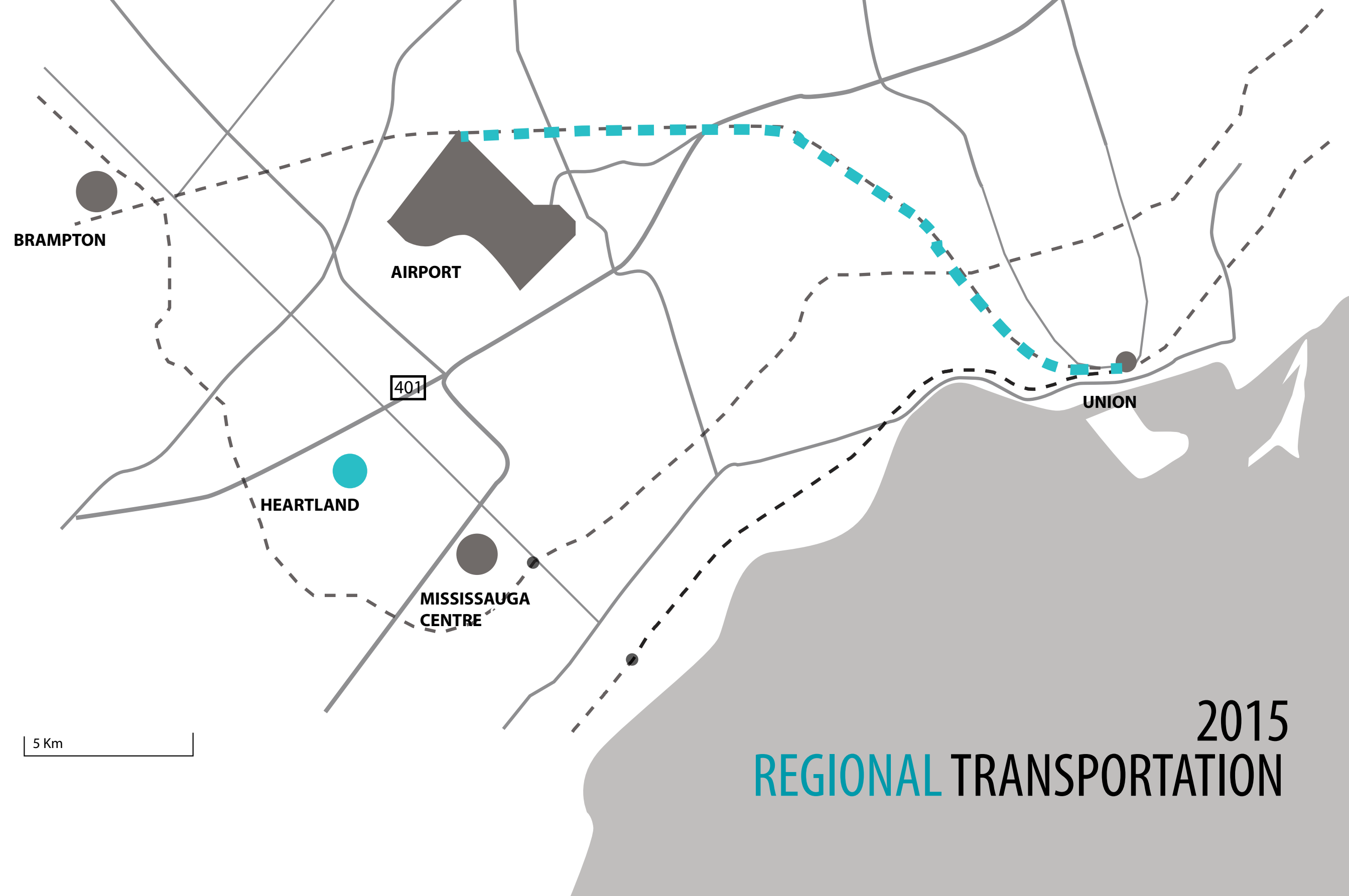
REGIONAL TRANSPORTATION 2013





THERE IS NO EASY CONNECTION
FROM BRAMPTON AND MISSISSAUGA

TRAFFIC BY CAR
PUBLIC TRANSIT NOT CONVENIENT
2013
REGIONAL RACHEL



BRAMPTON

AIRPORT

HEARTLAND

**MISSISSAUGA
CENTRE**

UNION

401

5 Km

2015
REGIONAL TRANSPORTATION

DIRECTLY CONNECTED TO WORK REGIONAL RACHEL

2015

2020

2020

REGIONAL TRANSPORTATION

BRAMPTON

AIRPORT

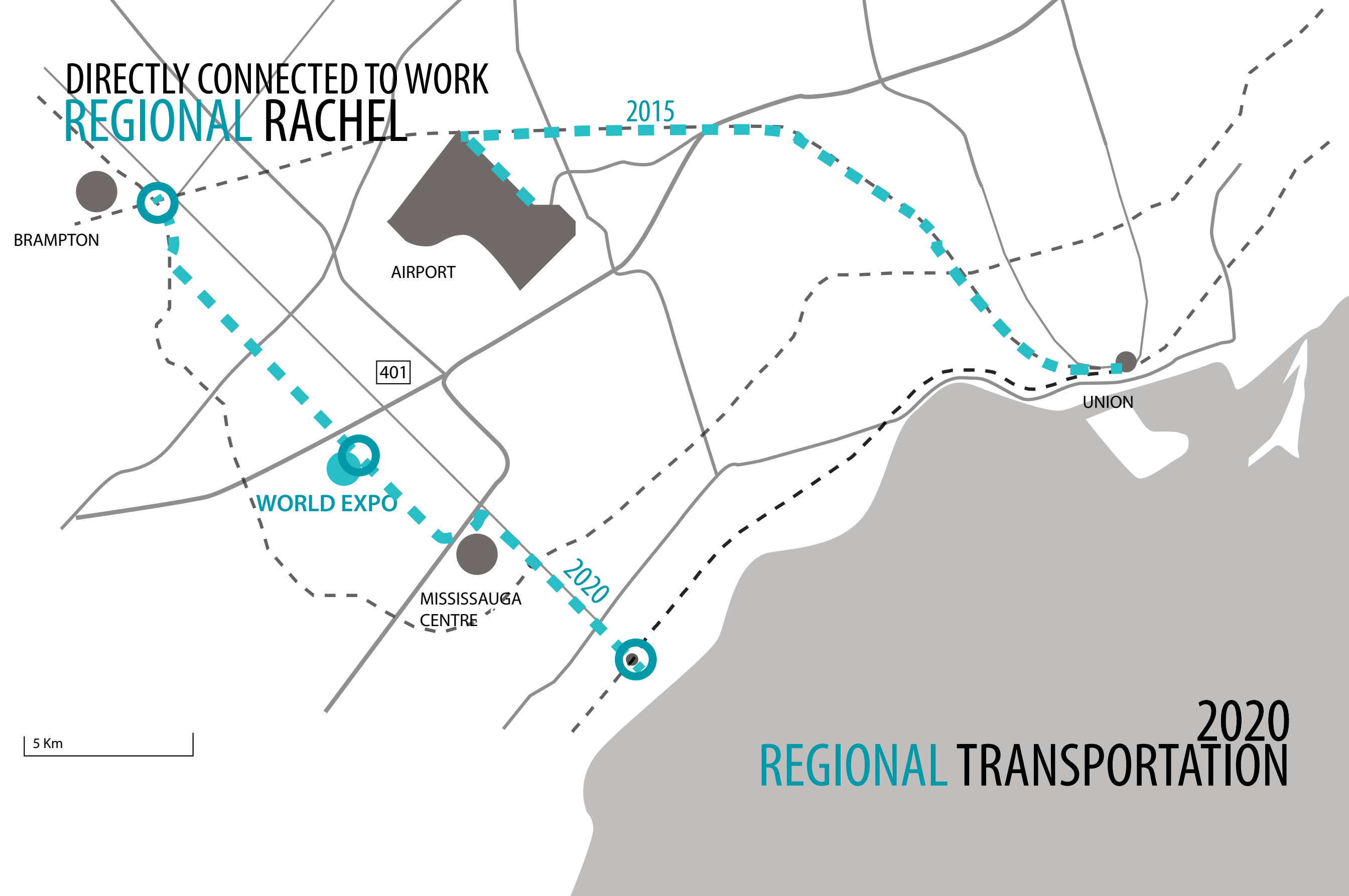
401

WORLD EXPO

MISSISSAUGA
CENTRE

UNION

5 Km



VISIT THE REGION
GLOBAL GREG

2025

BRAMPTON

AIRPORT

401

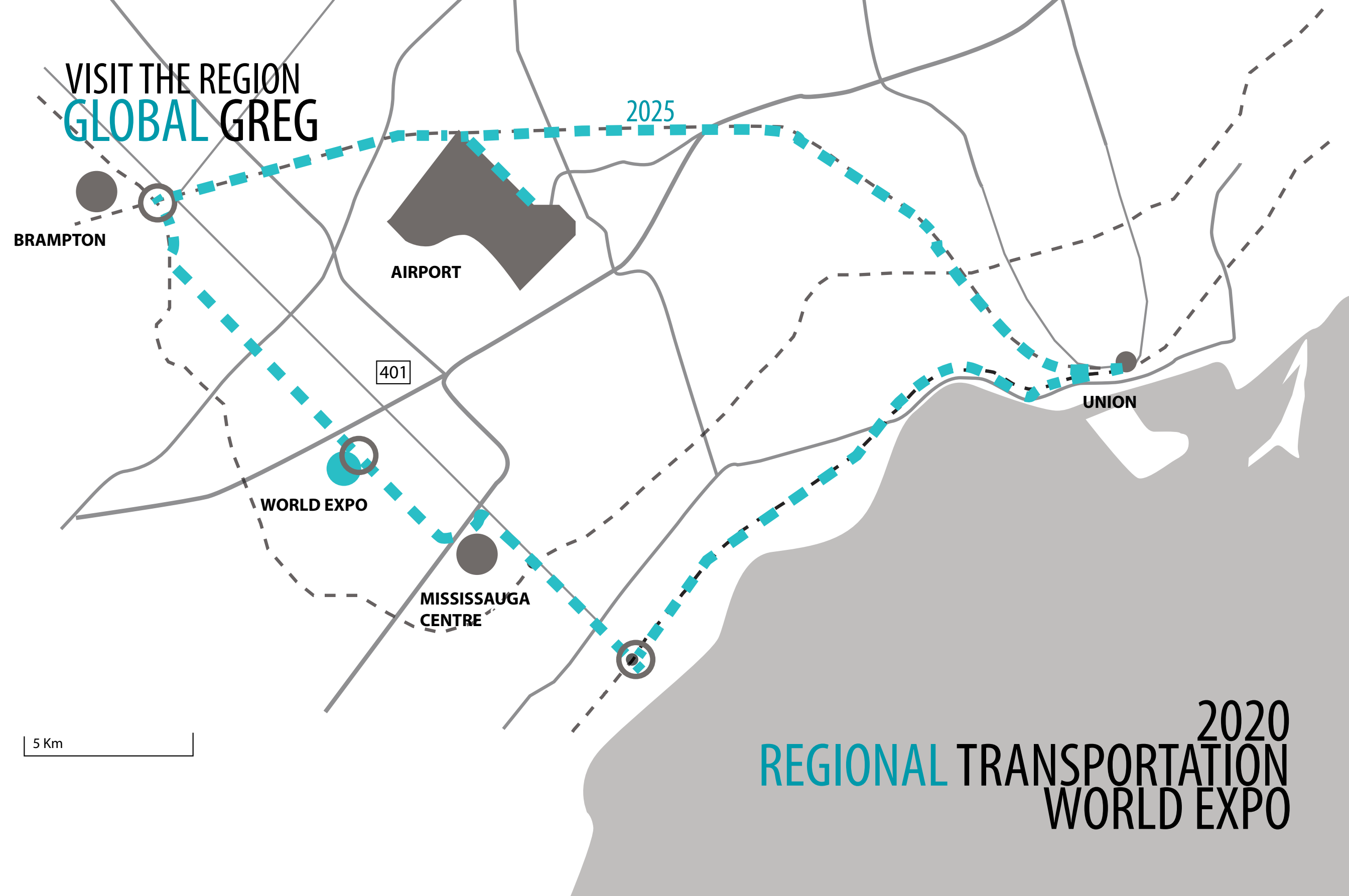
WORLD EXPO

MISSISSAUGA
CENTRE

UNION

5 Km

2020
**REGIONAL TRANSPORTATION
WORLD EXPO**

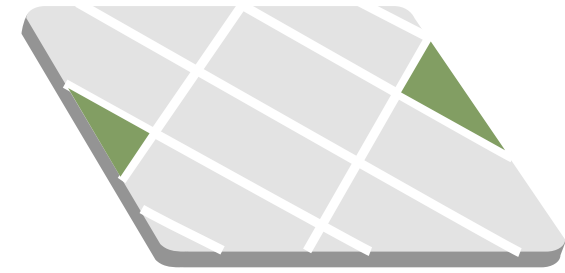
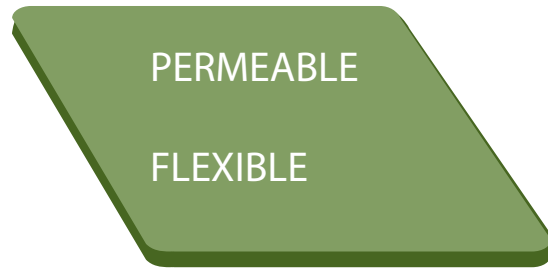




LOCAL HISTORY

RESPONSIVE DESIGN
FLEXIBLE, LOCAL & RECYCLE MATERIALS

HISTORICAL APPROACH

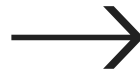


FLEXIBILITY

PORTABILITY

FARMLAND DIVISION

EXISTING DIVISION STILL VISIBLE



IROQUOIS

NATURAL MATERIALS

SKILLS

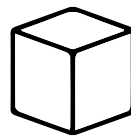
REINTERPRETATION



CONTINUOUS SURFACE

MODERN FARM LAND

MAINTAINING HISTORICAL DIVISION



MOBILE EXPO PAVILLIONS

SUSTAINABLE MATERIAL KIT

SKILLS



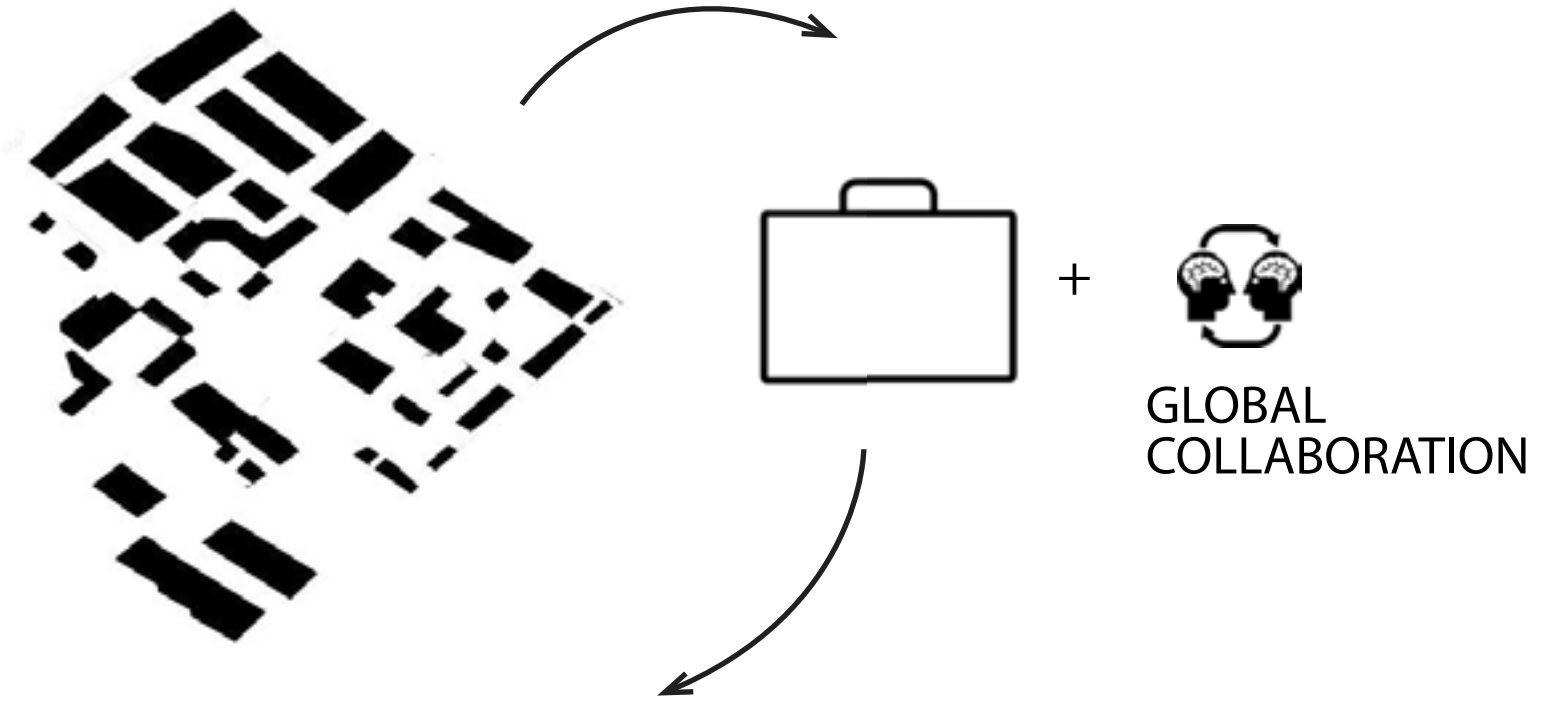
LOCAL TIMELINE

RESPONSIVE DESIGN - OPEN SYSTEM
ADAPTING TO FUTURE NEEDS

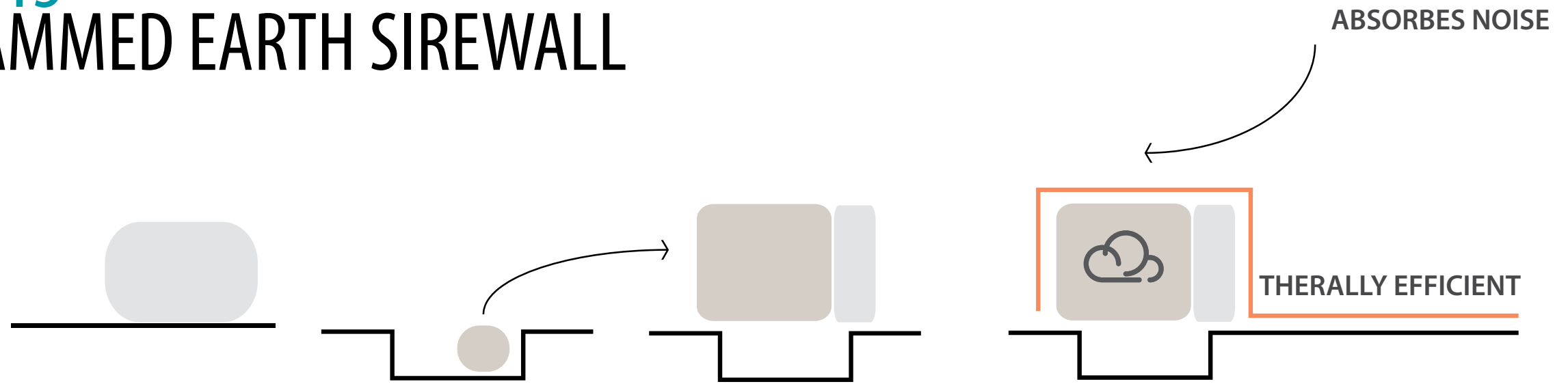
2015 DEMOLITION OF WAREHOUSES



2015
MATERIALS FOR
FUTURE PAVILLION
RECYCLE FROM SITE



2015 RAMMED EARTH SIREWALL



2025 EXPO SINERGY

STATION

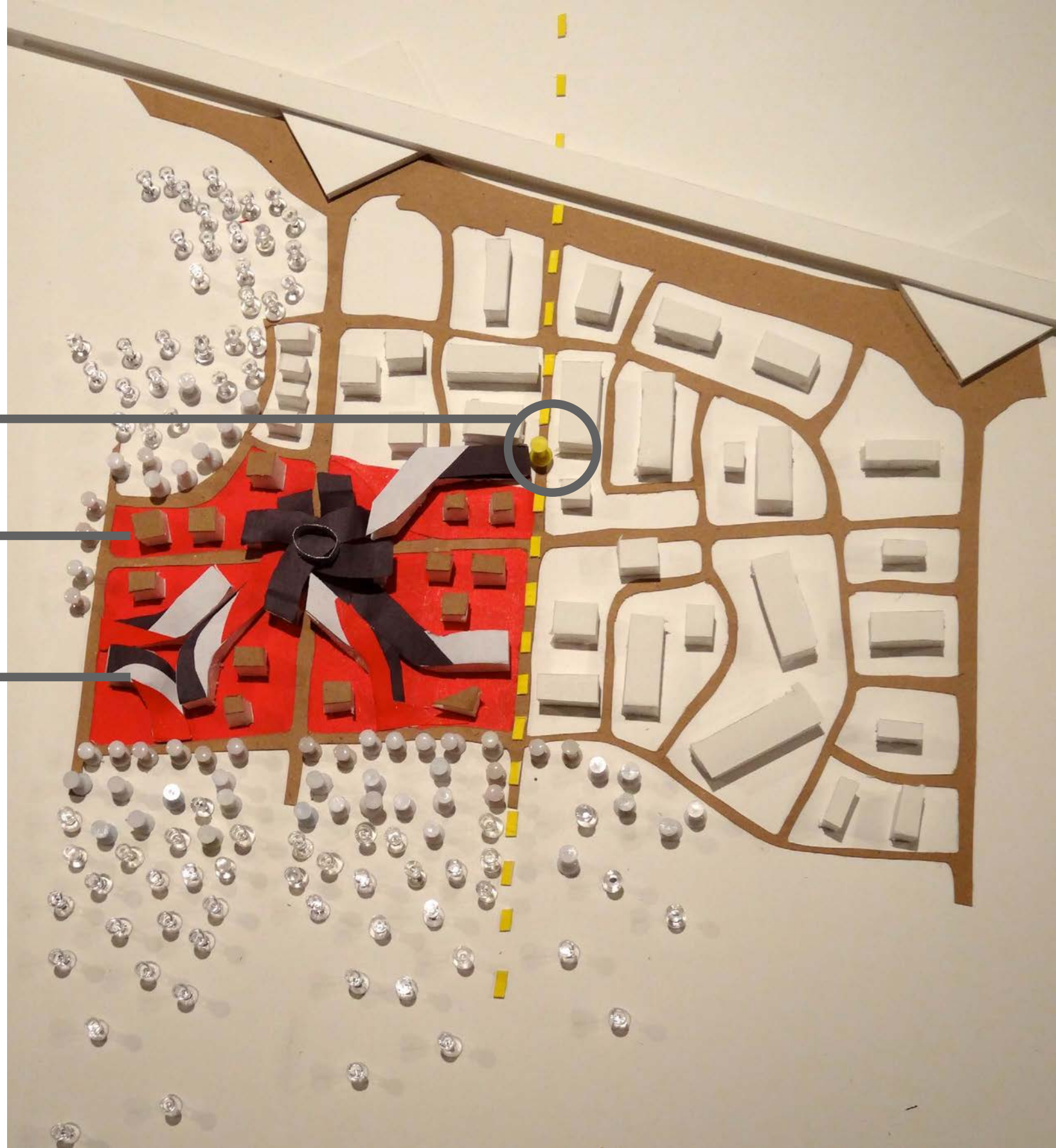
NOT CENTRAL I N 2025

PAVILIONS 40%

AMENITIES BUILDING 10 %

CANADIAN PAVILLION,
HEADQUARTER 10 %

MASTER PLAN



2025 EXPO SINERGY

PAVILIONS MADE WITH KIT

MATERIAL + OTHERS

AMENITIES MADE WITH

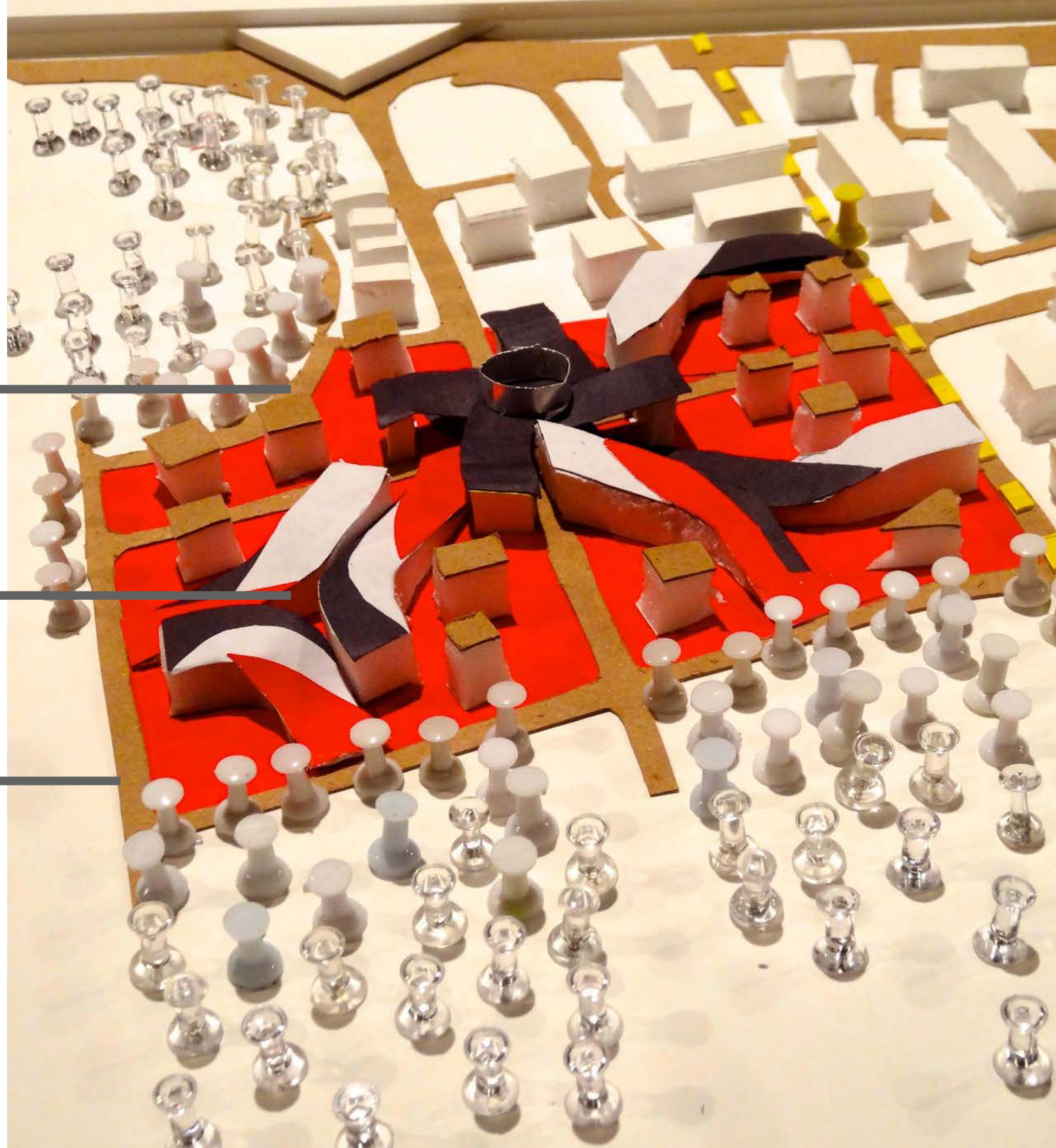
SIREWALL MATERIAL

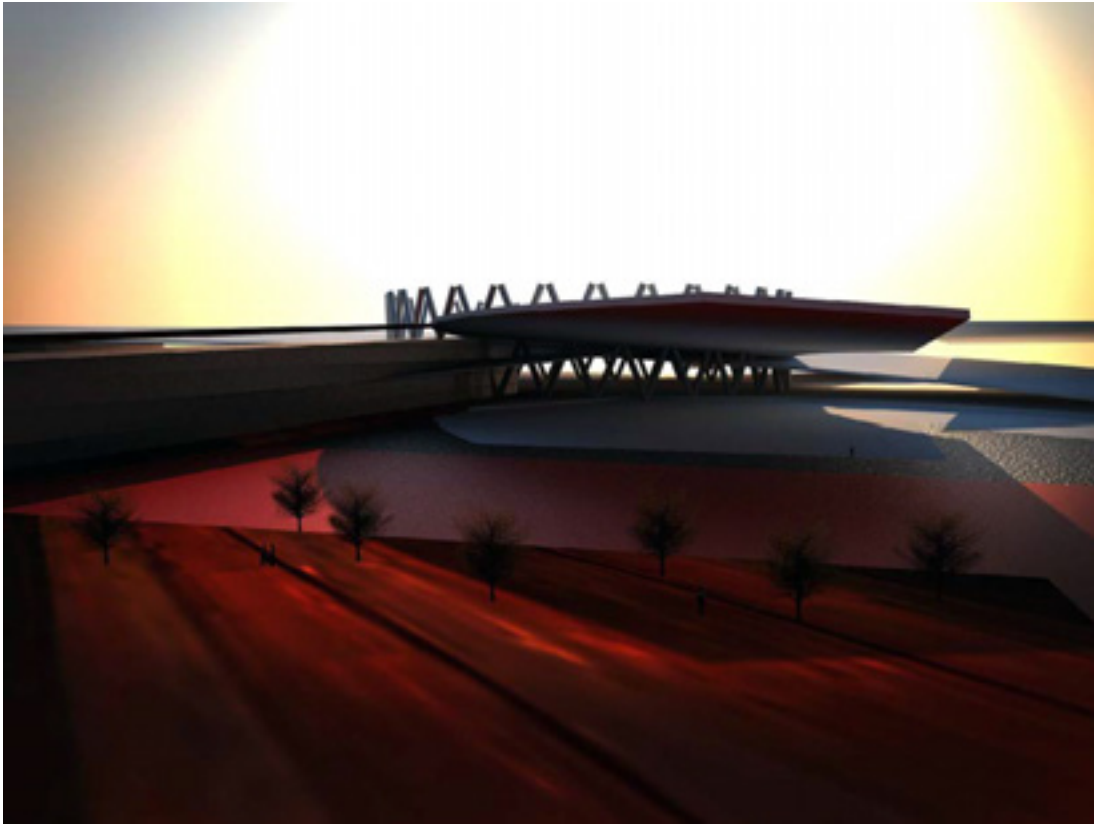
GREEN ROOF WITH NATIVE

VEGETATION

PERMEABLE FLEVIBLE

SURFACE





FOOD COURT

COMMERCIAL

RETAIL

OFFICES

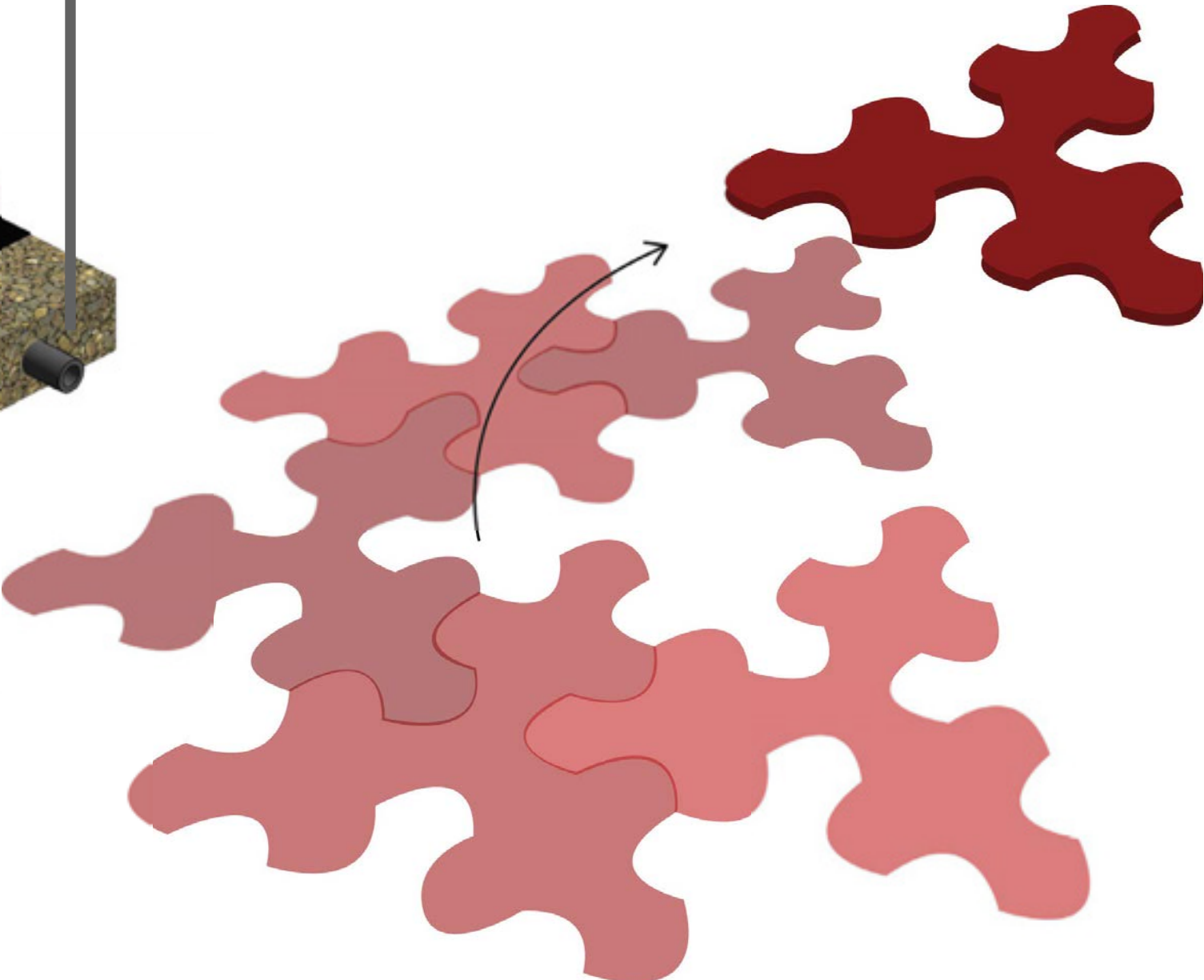
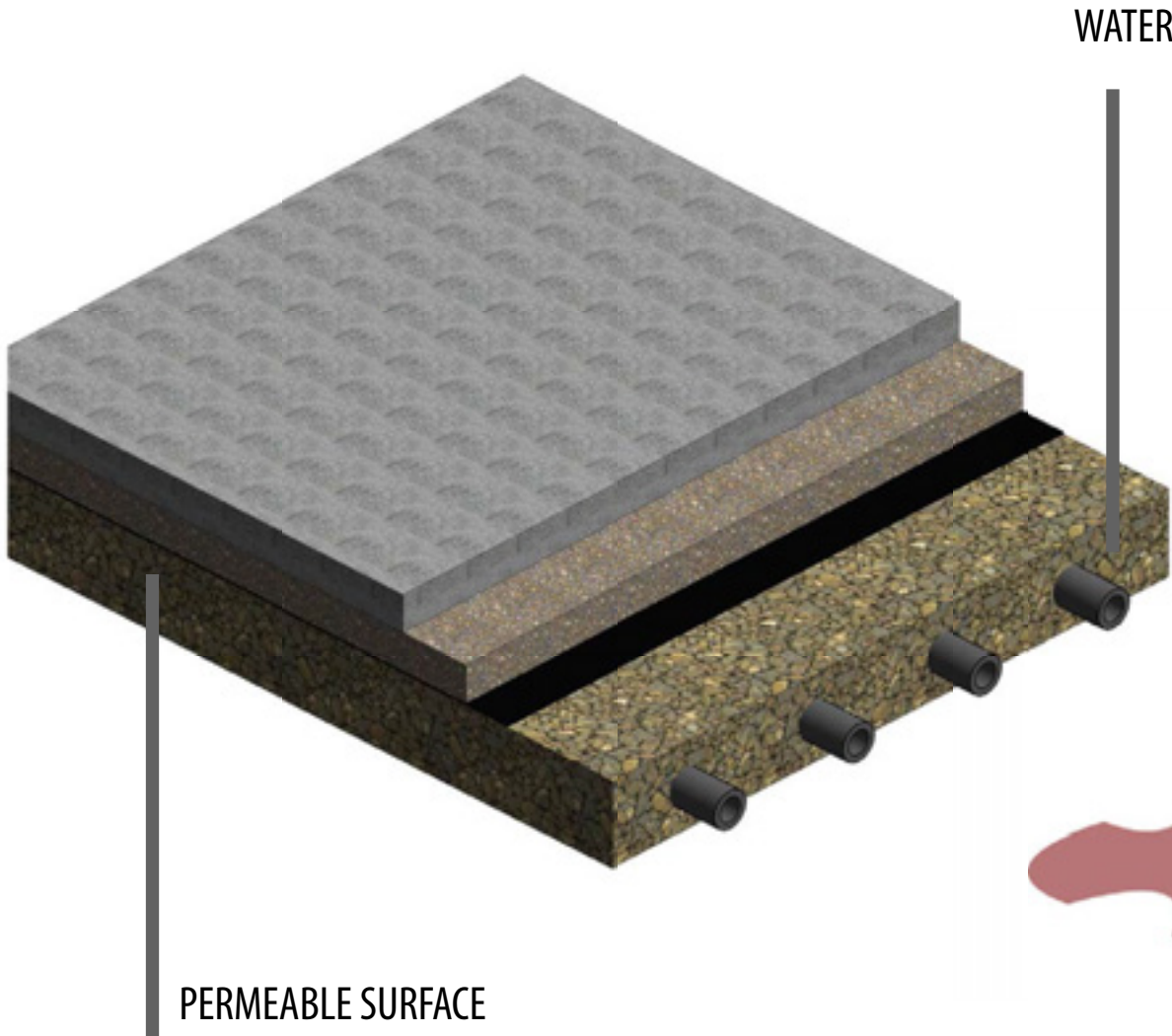
RECREATION

HOTEL

GREEN ZONE

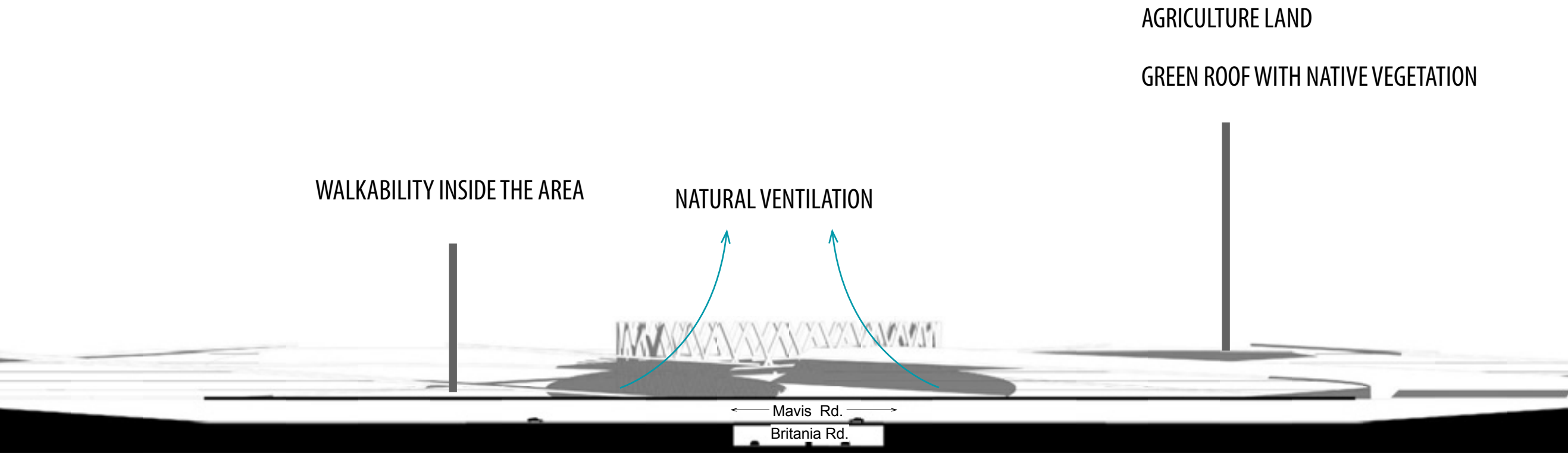
PROGRAM

PERMABLE & FLEXIBLE PLATFORMS



HOW IS THIS RESPONSIVE

SECTION



HOW IS THIS RESPONSIVE

HISTORICAL AND MODERN APPROACH

2035

RECYCLE LOCAL ADAPTATION

Temporary pavillions are dismantled and reused on surrounding site

ADAPTTION OF THE OLD
PAVILLION INTO NEW NEERDS

MATERIALS OF PAVILIONS ARE RECYCLE
INTO THE RESIDENTIAL

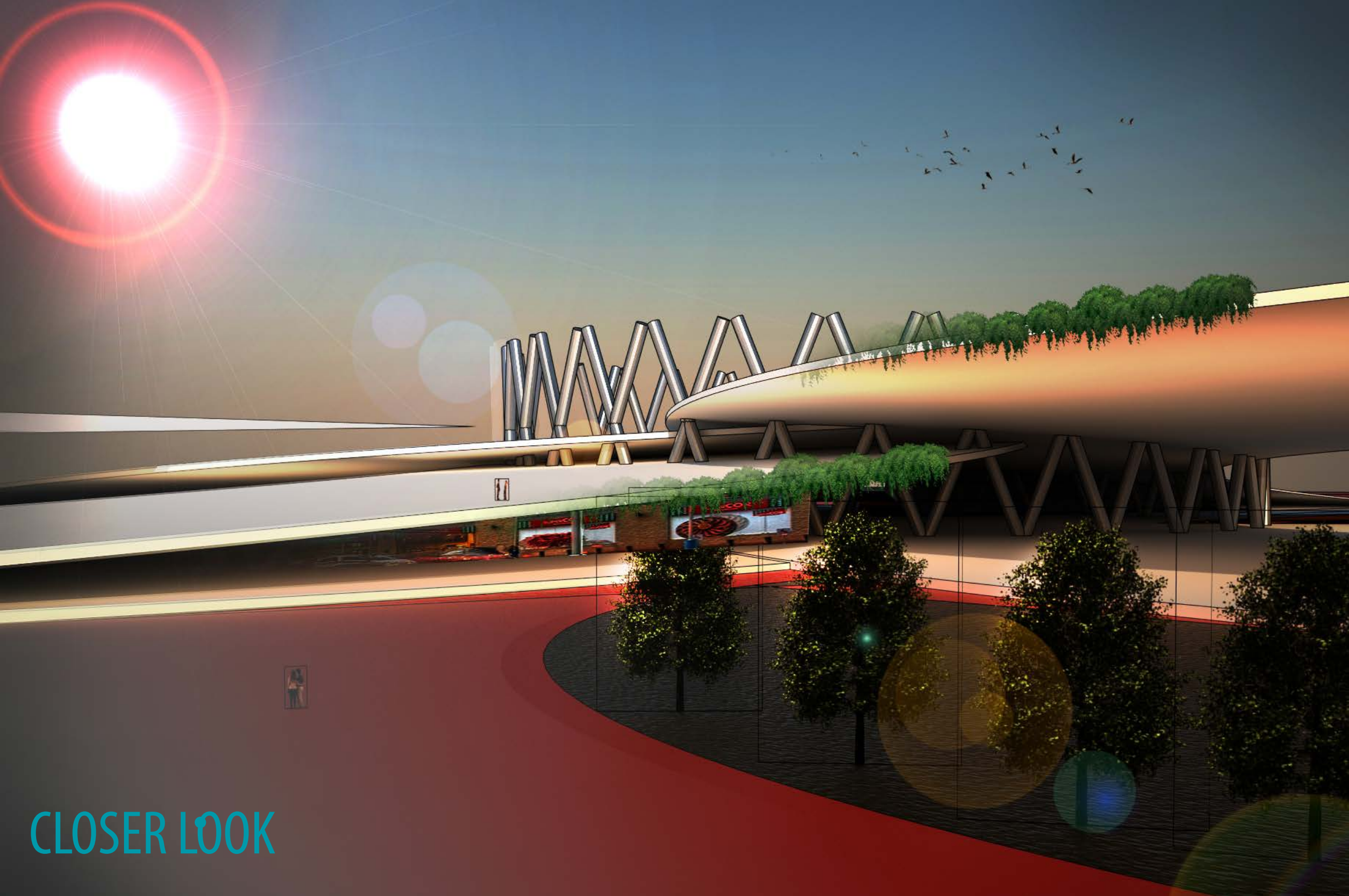


2035 RECYCLE LOCAL ADAPTATION

Temporary pavillions are dismantled and reused on surrounding site

MASTER PLAN





CLOSER LOOK

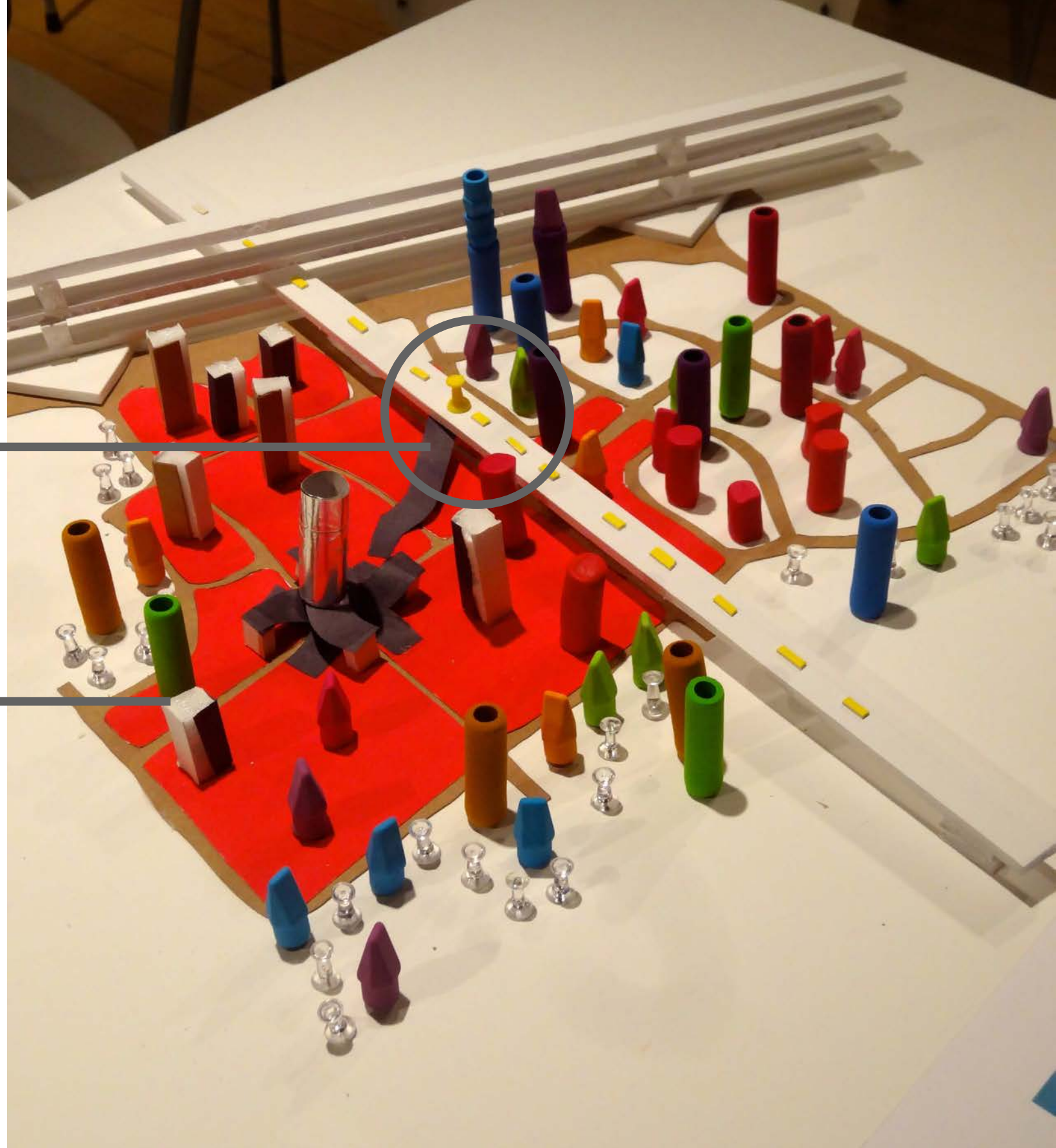
2100 EVOLUTION

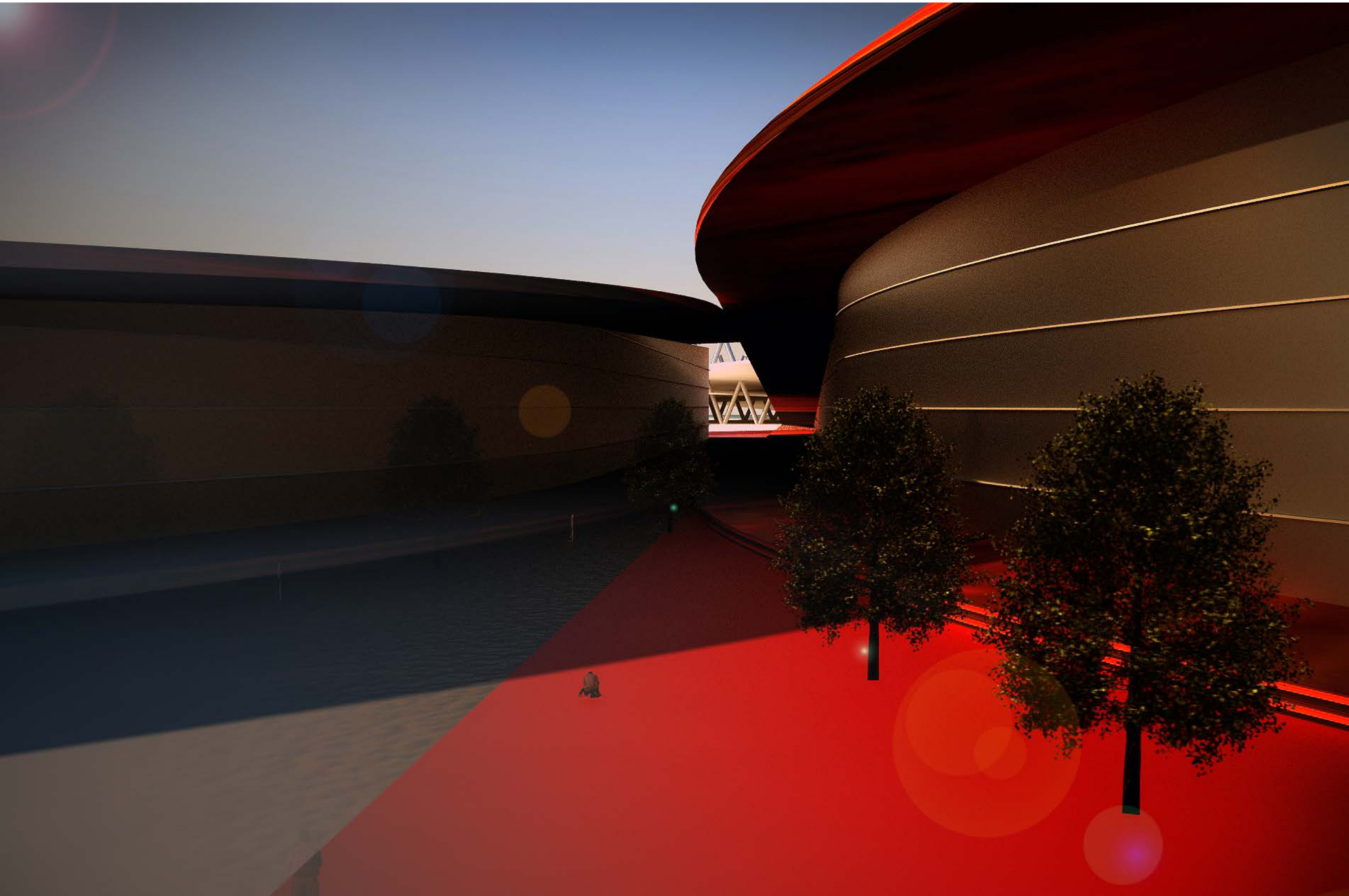
Site adapts to unpredictable future needs.
Open system that improves live over time

STATION IS NOW ON THE CENTRAL

MIX-USED AND HIGH DENSITY
DEVELOPMENT

RE-USE OF THE ORIGINAL MATERIAL
HIGH DENSITY





BUILT YOUR FUTURE!

**WORLD EXPO
COMPETITION 2025-2030**

**PARTICIPATION TO THE EVOLUTION
OF THE WORLD EXPO SITE.
REABILITATION OF EXPOSITION'S
PAVILLONS.**

**ADAPTATION TO
FUTURE NEEDS**



LIMIT DATE : 2030/06

IN COLLABORATION WITH THE CITY OF TORONTO, CITY OF MISSISSAUGA AND
THE INSTITUTE WITHOUT BOUNDARIES
230 RICHMOND STREET EAST
TORONTO ON, M5A 1P4 CANADA
WORLD EXPO SITE
6045 Mavis Rd #2, Mississauga, ON L5R 4G6
MORE INFORMATION ON WORLD-EXPO@IWB.COM AND FOLLOW US FACEBOOK.

2100 EVOLUTION

Site adapts to unpredictable future needs.
Open system that improves live over time

MASTER PLAN
HIGH DENSITY



RESPONSIVE DESIGN

RESPONSIVE.
ADAPTING TO
FUTURE NEED OF
DENSITY
AFFORDABLE HOUSING



2025



2040



2050

