


union

A wilder way to education.

An aerial photograph of a university campus, likely the University of Toronto Scarborough (UTSC), showing a large, dense forested area on the left and several large, modern academic buildings on the right. The campus is surrounded by trees and greenery. A road or path is visible in the upper right corner. The overall scene is a mix of natural landscape and urban development.

How can we leverage UTSC's natural resources to engage youth and the community with the post-secondary system?"

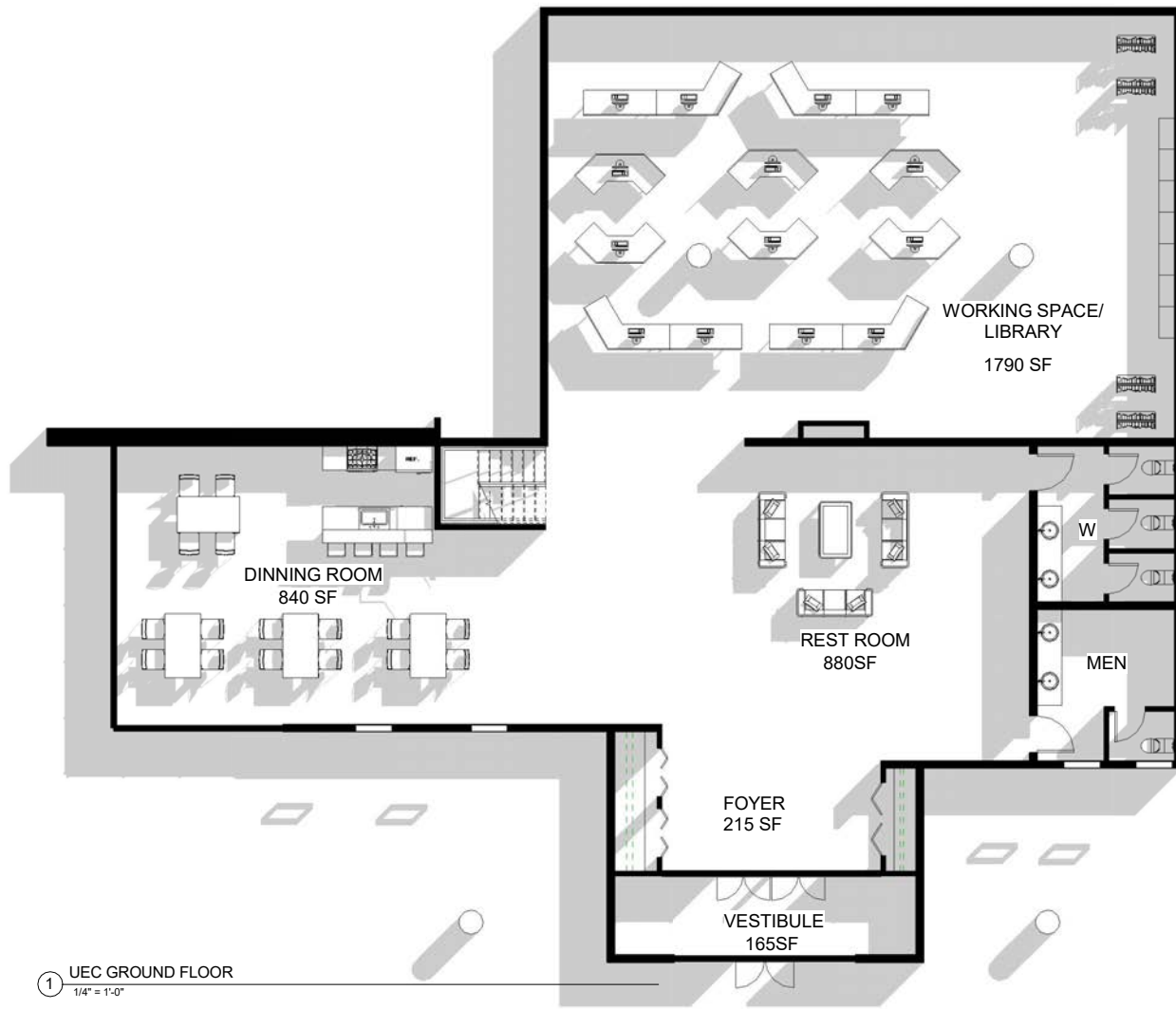
A gravel path winds through a forest of tall, thin trees with sparse green leaves. The path is covered in shadows from the surrounding trees. A dark purple rectangular box is overlaid on the upper right portion of the image, containing white text.

Highland Creek Ravine:
a corridor for learning

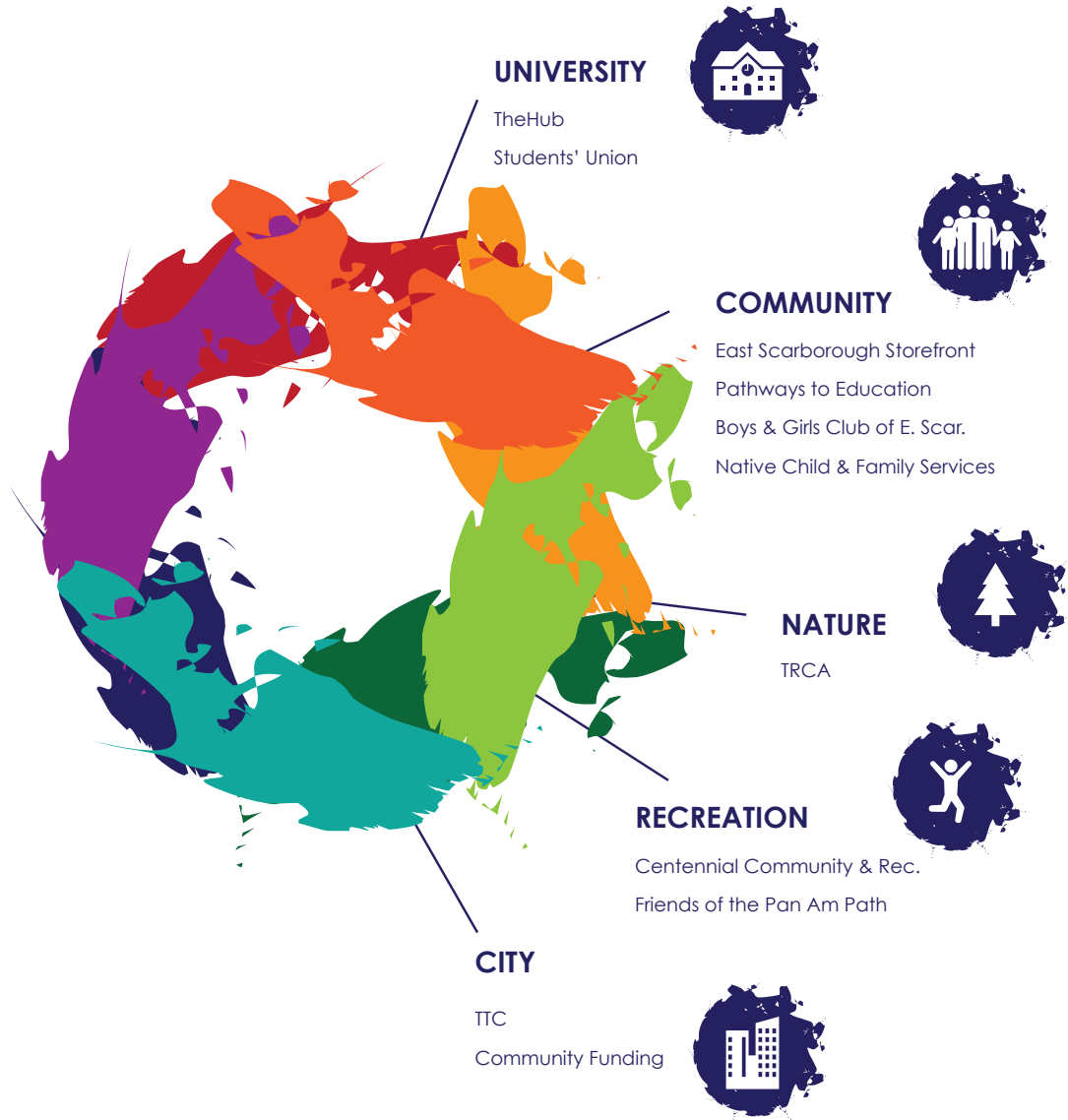








① UEC GROUND FLOOR
1/4" = 1'-0"



GEORGE, 70

Wants to be involved in his community
// Doesn't know where to start



AMIHAN, 35

Wants the best for her children
// Overworked, has no energy



MEI-MING, 18

Wants to excel at university
// Feels overwhelmed



VIKAS, 6

Has high aspirations
// Lacks guidance





Amita 35

Wake up 6 AM, have brief breakfast, Amita is stressed about 2 upcoming shifts & kids



Go to school/ neighborhood meeting place



Goes to work more relaxed



Vikas 8 +younger sister Ada

As a group to Union center in the ravine



Bus driver gets lost on the roads around



Mei 19

Arrive at Union center, where George [mentor] gives a lecture/info



Go to the ravine!



Rain starts



Mentors idea: head back

Kids idea: Dirt time!

Back at center: early lunch



Vikas takes care of his sister



Mei gets to play cool engineer with high-school students mentors



Continue with program



George 60

George watches Vikas and sees a potential mentor in him



Amihan 30

Vikas tells all about it to his mom



George stays at the site for Community Forum



sit together by coincidence

George initiates conversation, topic about kids makes Amihan interested



Arrives for Community Forum a bit late



Measures of Success

Partnerships

Access & Connectivity

Personal Narratives

UTSC Master Plan

Long-Term Civic Engagement

Impact + Future implications

Minimally Invasive

Possible future network between other nature centres

Extend ravine into campus to offset impact from built form

Thank You!

