

# MIRVISH VILLAGE PRESERVATION DISTRICT

TEAM 11

# HONEST ED MIRVISH: THE MAN & HIS VISION

MUSE

In spite of little formal education and very limited or practically no financial base, it has been possible for me to go from Dundas Street to Buckingham Palace.





# CONTEXTUAL MAP

MUSE

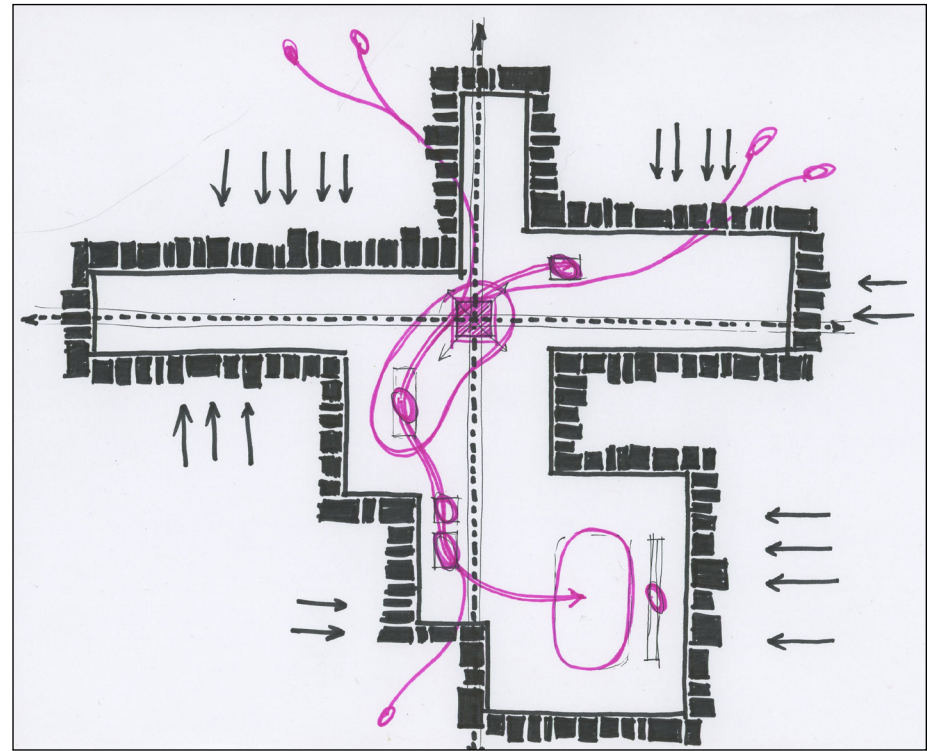
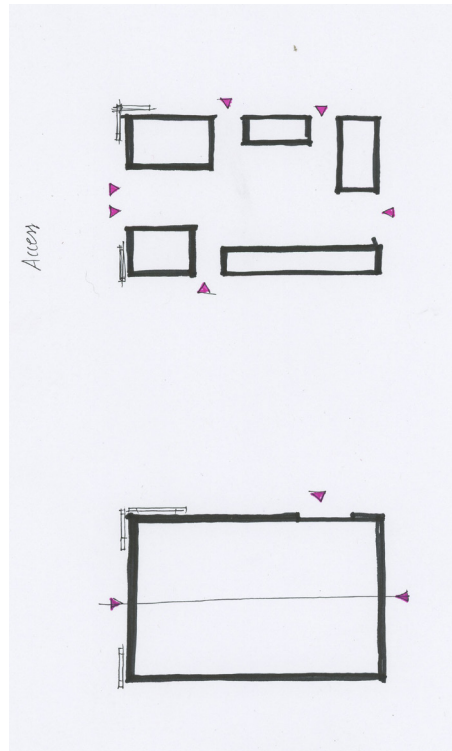
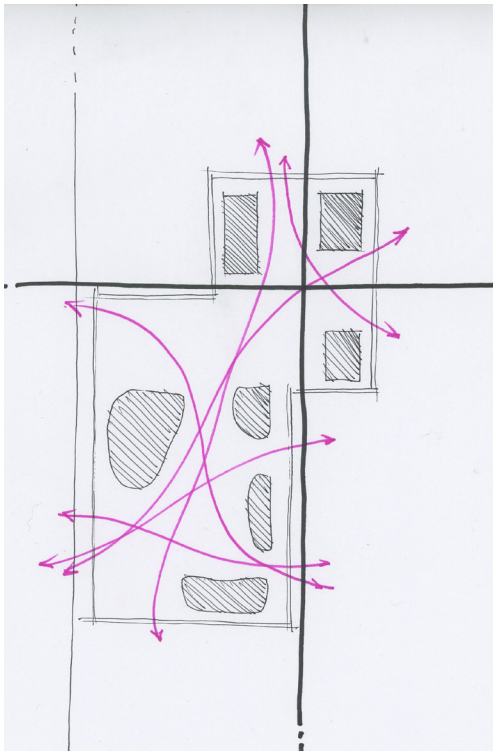
## CONNECTIONS

Mirvish Village VS City of Toronto  
OTHER FACILITIES ALONG BLOOR ST. AND BATHURST ST.





- Flexible
- Adaptive
- Anticipating design
- Catering to the changing needs of society and the environment over time

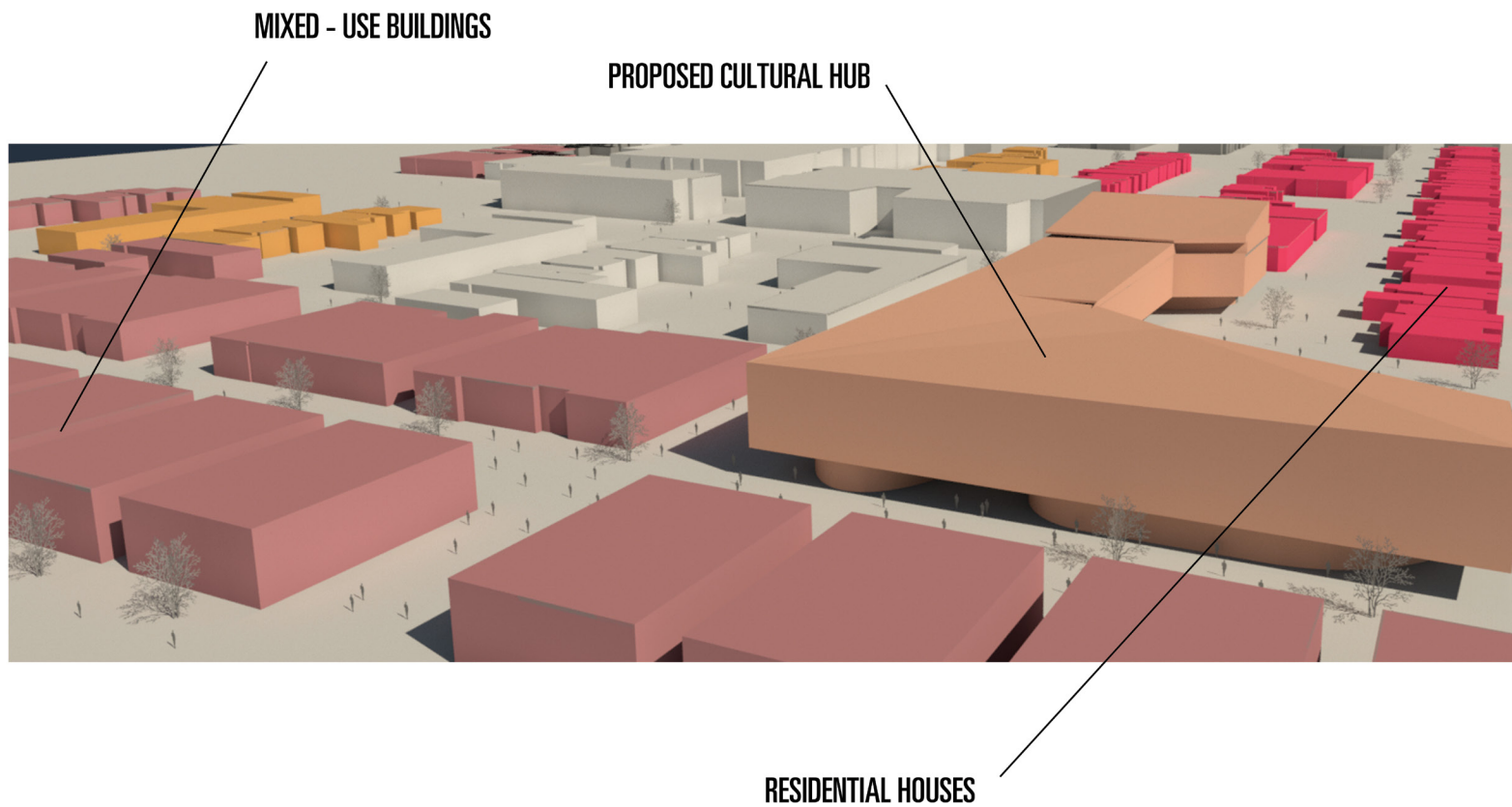


# MUSE

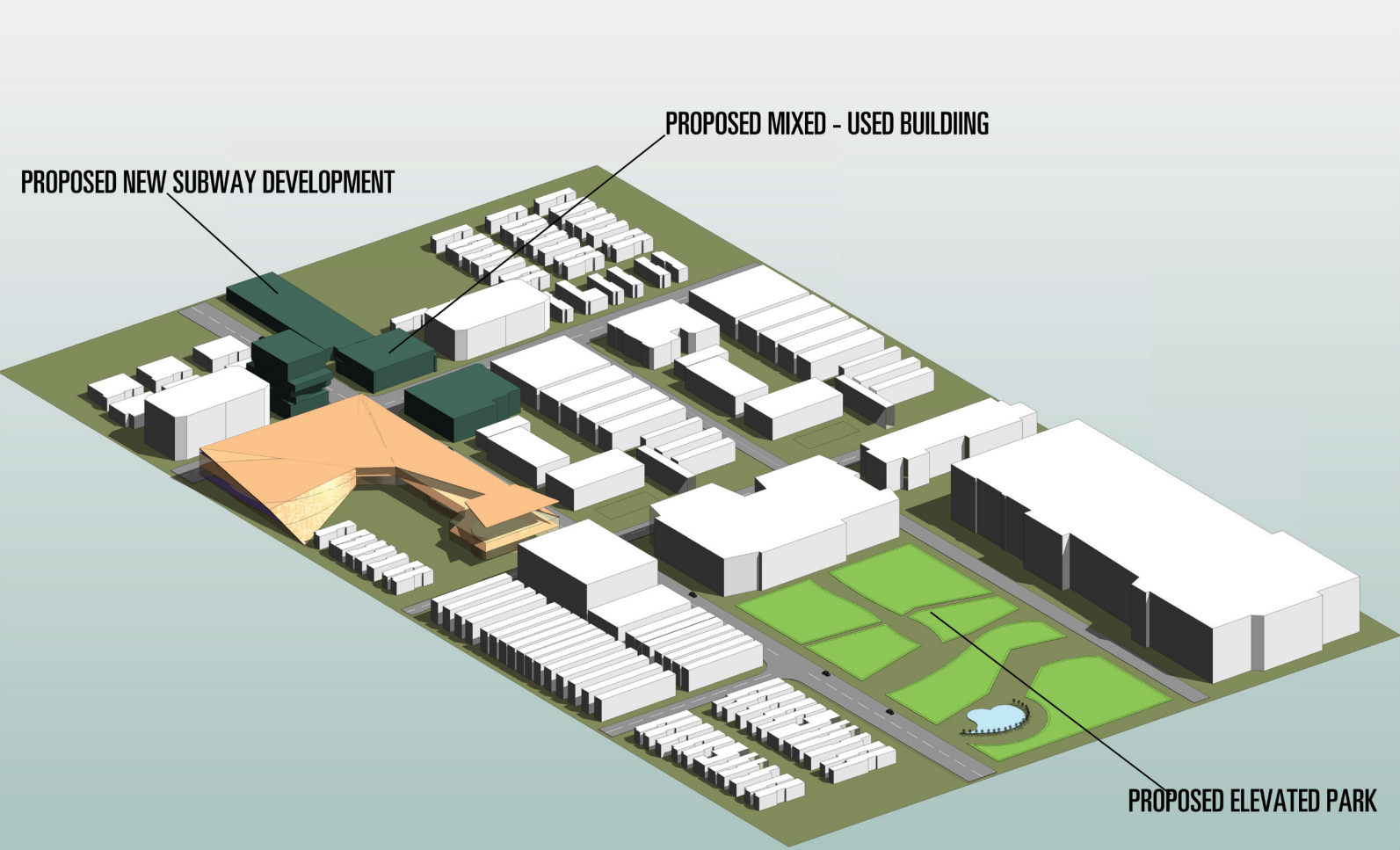


Muse honours the legacy of Ed Mirvish by fostering a culture of exchange centred around theatre, film, and fine arts. This hub of artistic innovation will be a gateway to Toronto's growing cultural community and a regional attraction for its rich history and creative commerce.





3D MASSING SITE FOR 2020



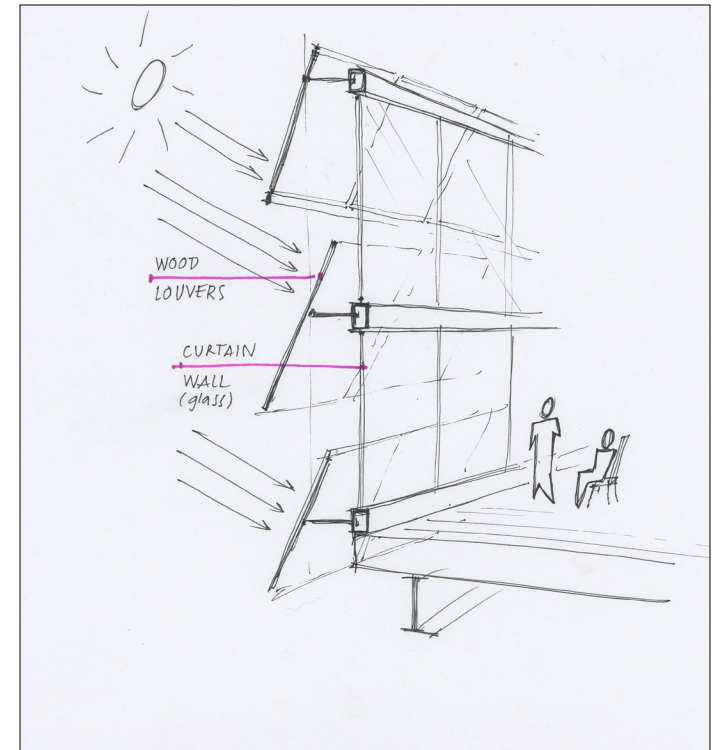
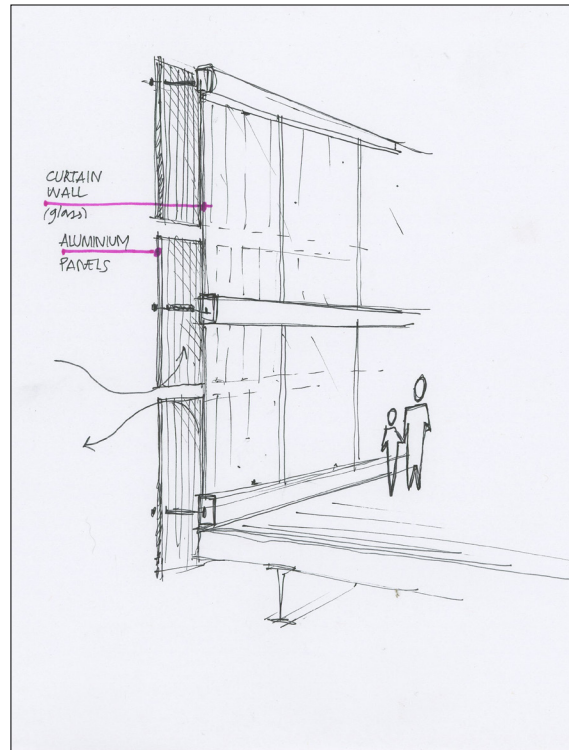
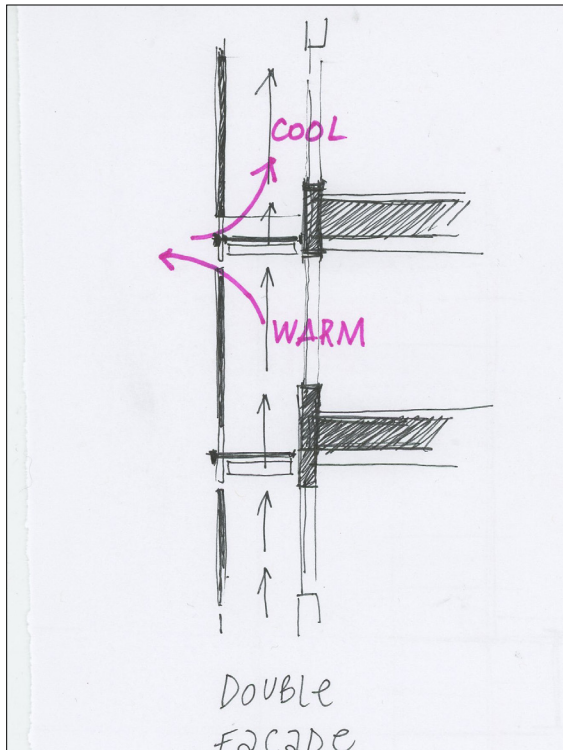
3D MASSING SITE FOR 2035

## ENVIRONMENT:

- Solar panel lowers
- Rain water collection
- 3 pane glass/low-E
- Green space

## HUMAN:

- Honours local legacy
- Movable walls, creating flexible venues
- Cultural hub
- Educational Center
- Encourages gathering and exchange



2020



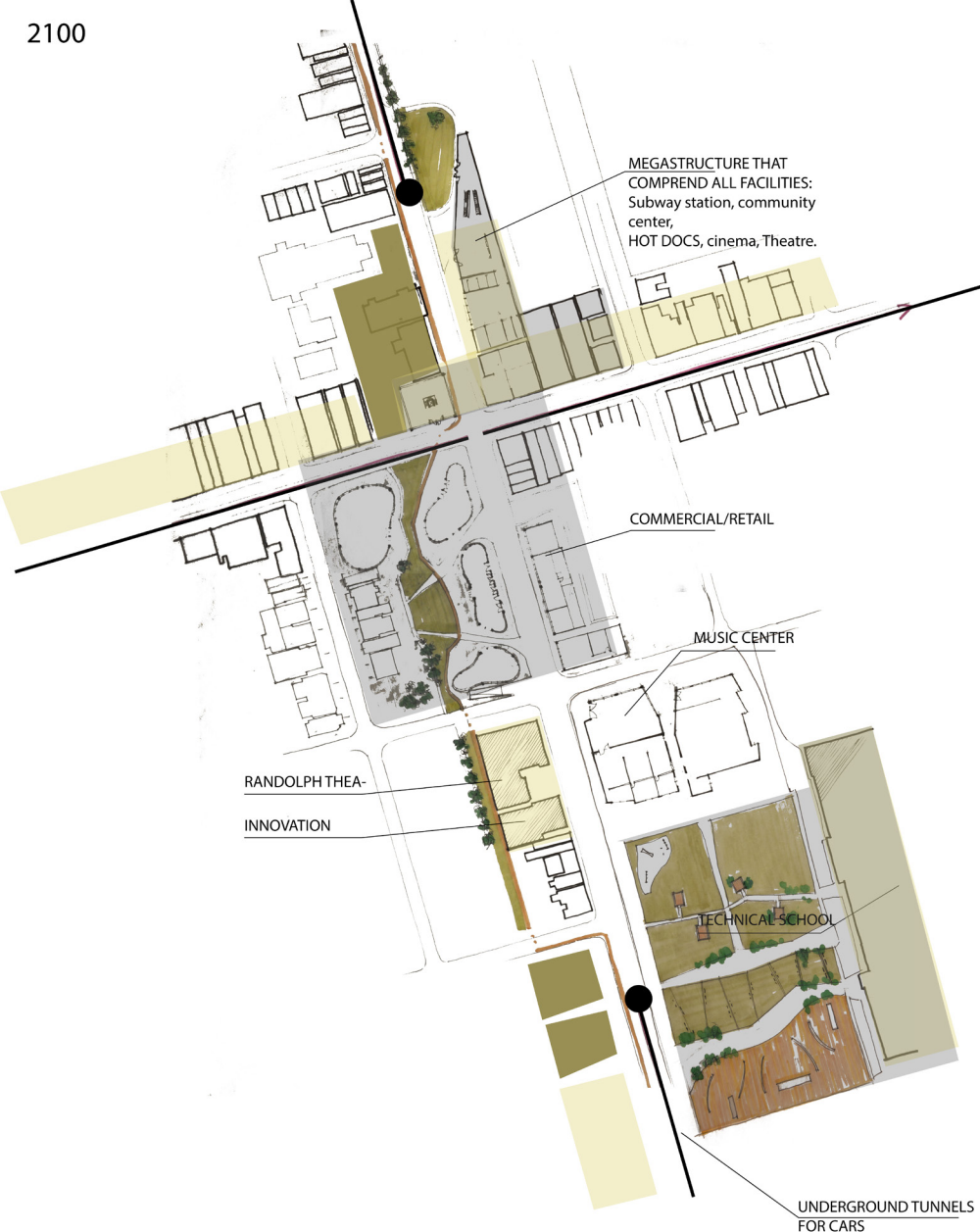
2035

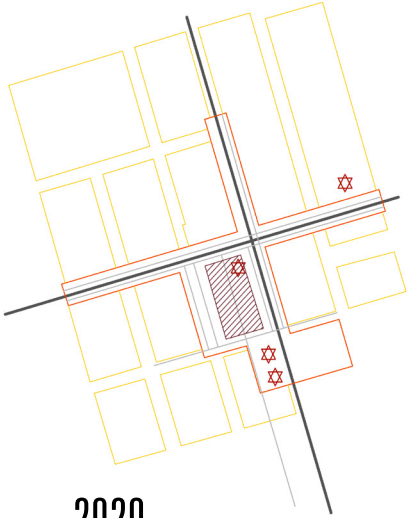


2050

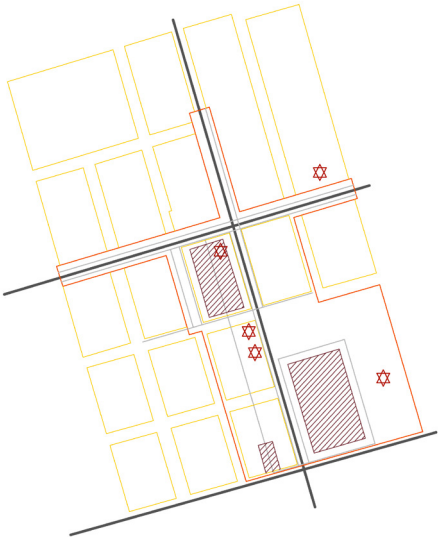


2100

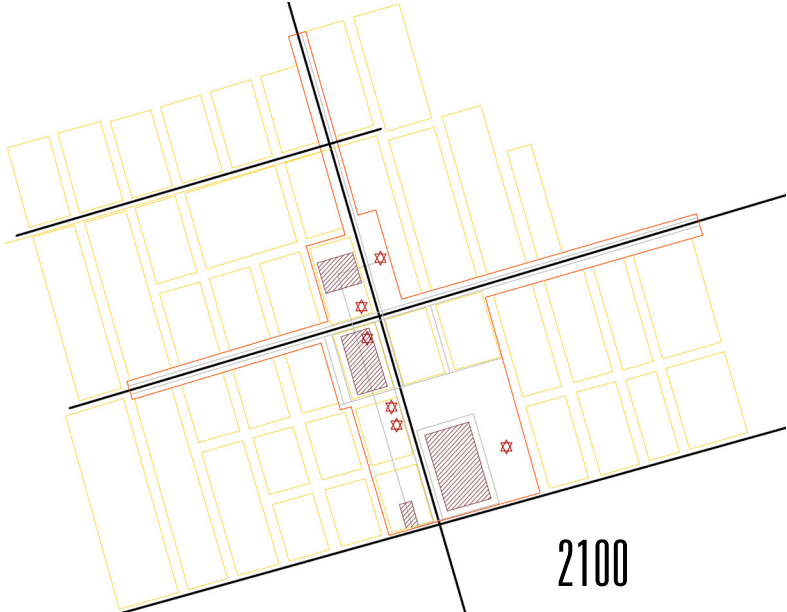




2020

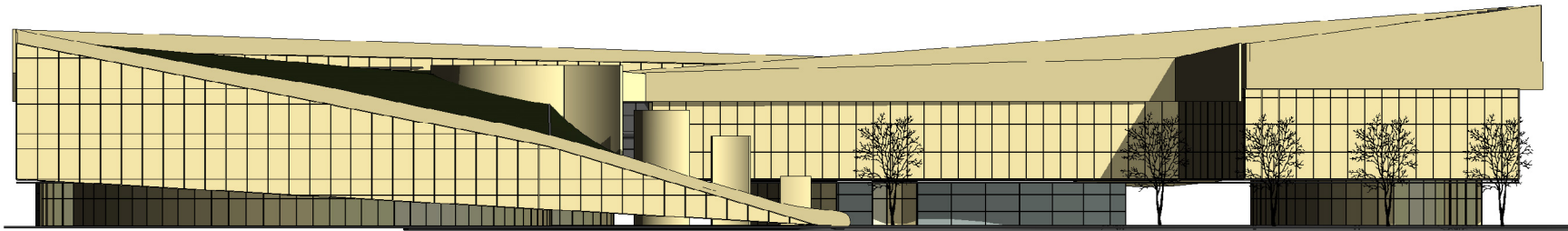


2035

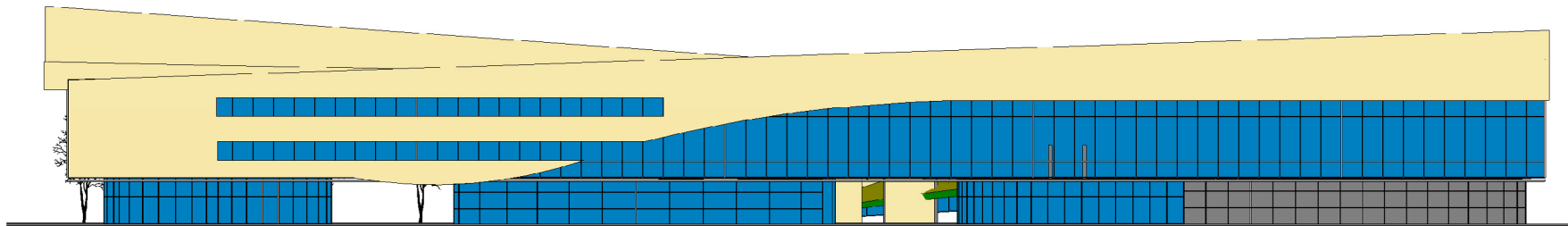


2100

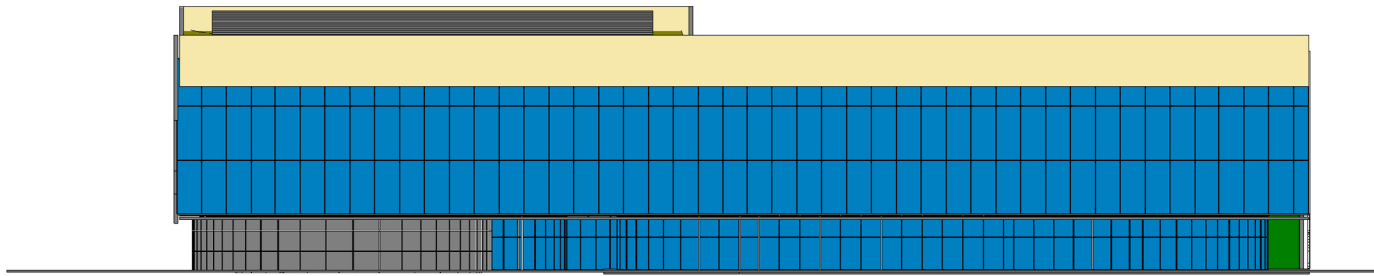




① WEST ELEVATION  
1 : 200



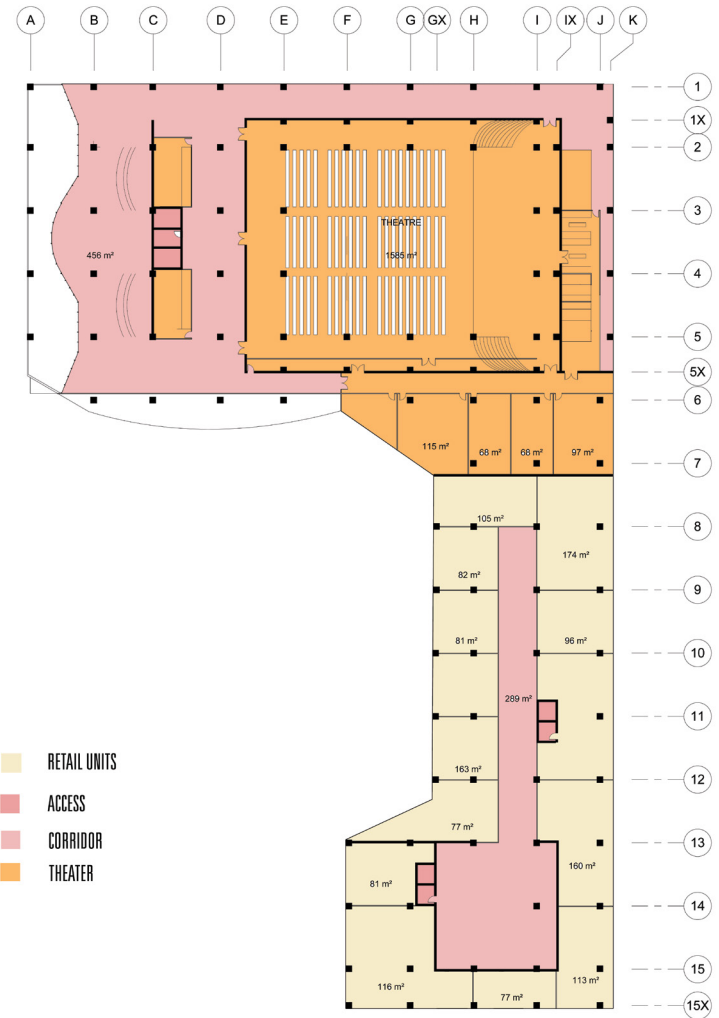
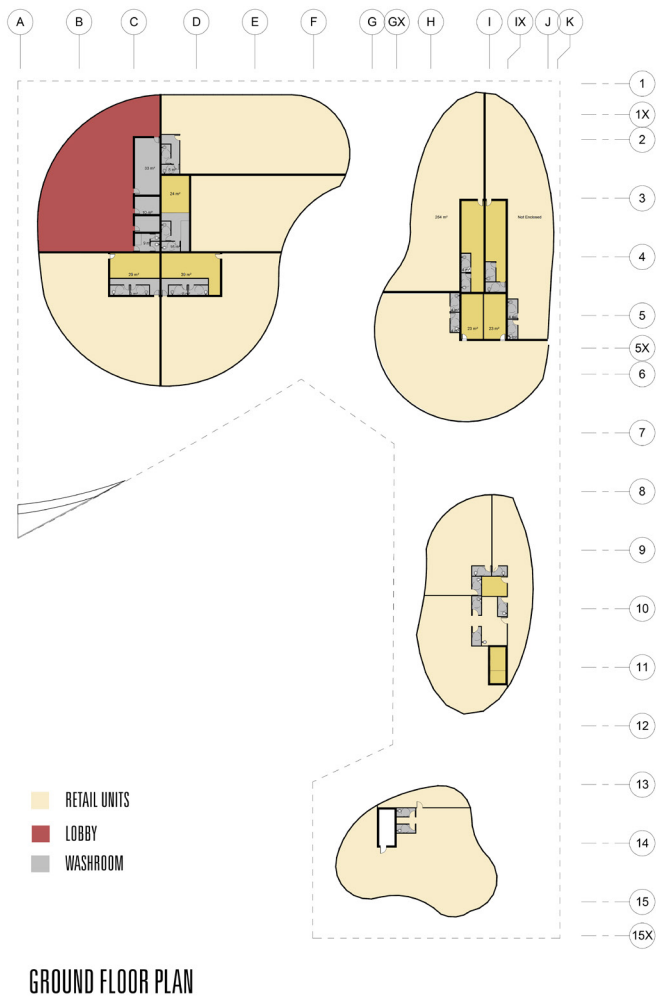
② EAST ELEVATION  
1 : 200



① NORTH ELEVATION  
1 : 200

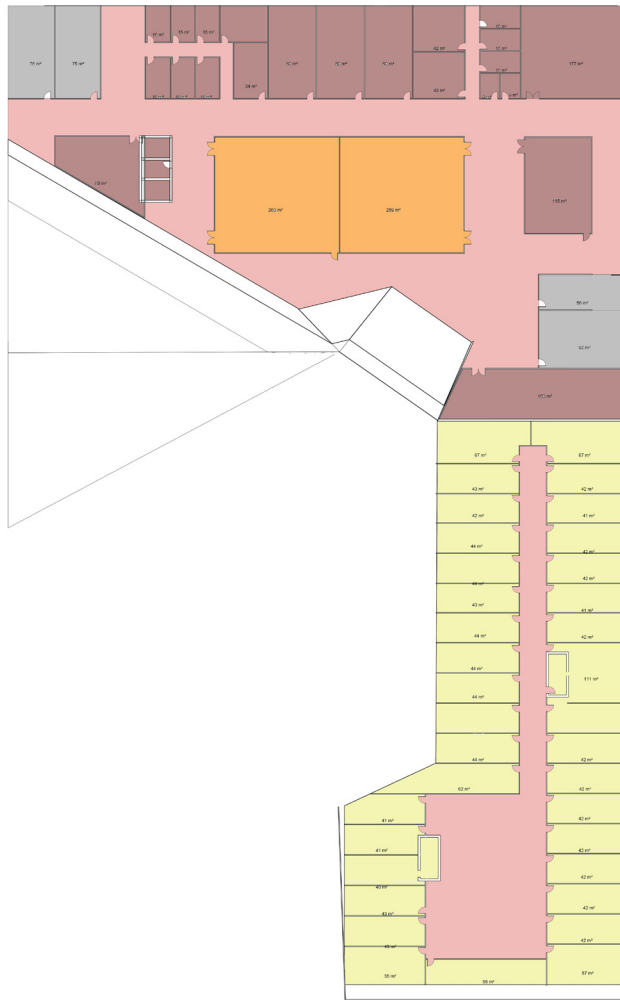


② SOUTH ELEVATION  
1 : 200

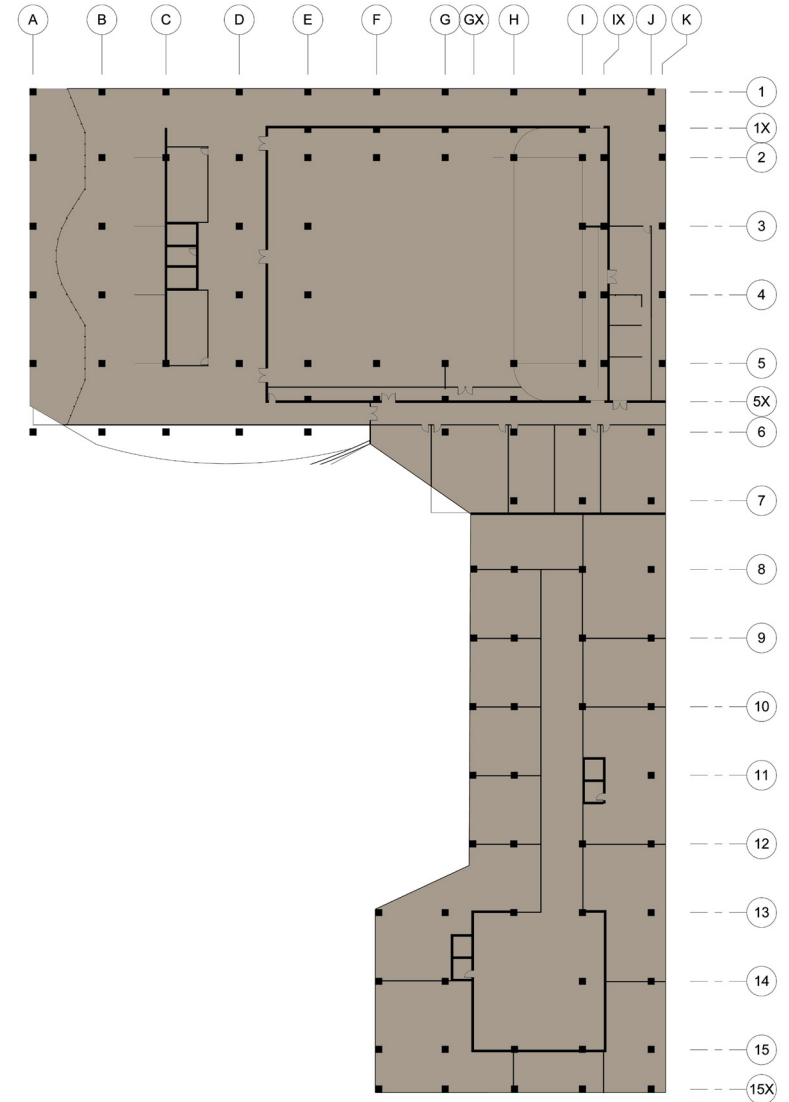


SECOND FLOOR PLAN

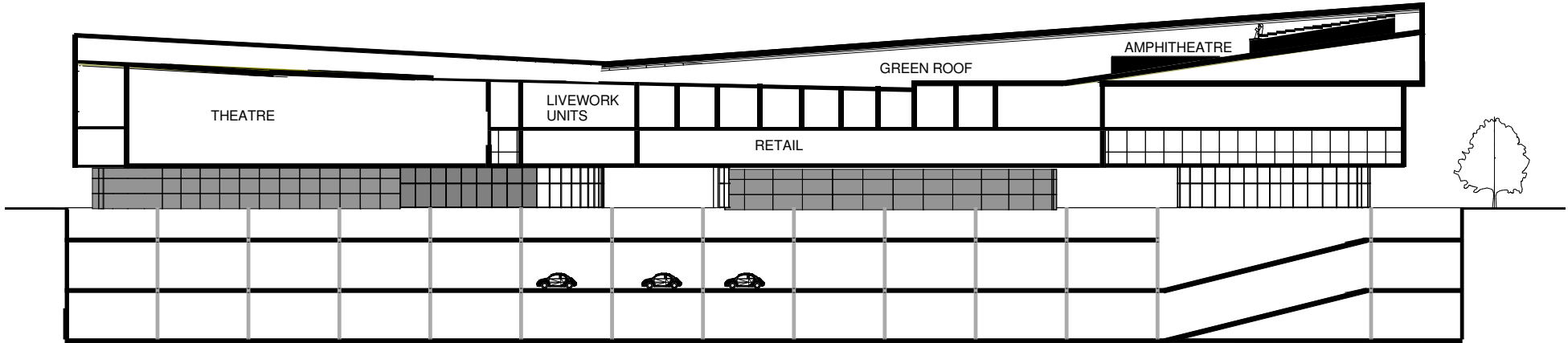
- RESIDENTIAL
- STUDIO
- CORRIDOR
- THEATER
- RESTROOM



FOURTH FLOOR PLAN



SECOND FLOOR STRUCTURAL PLAN



COURTYARD

MUSE







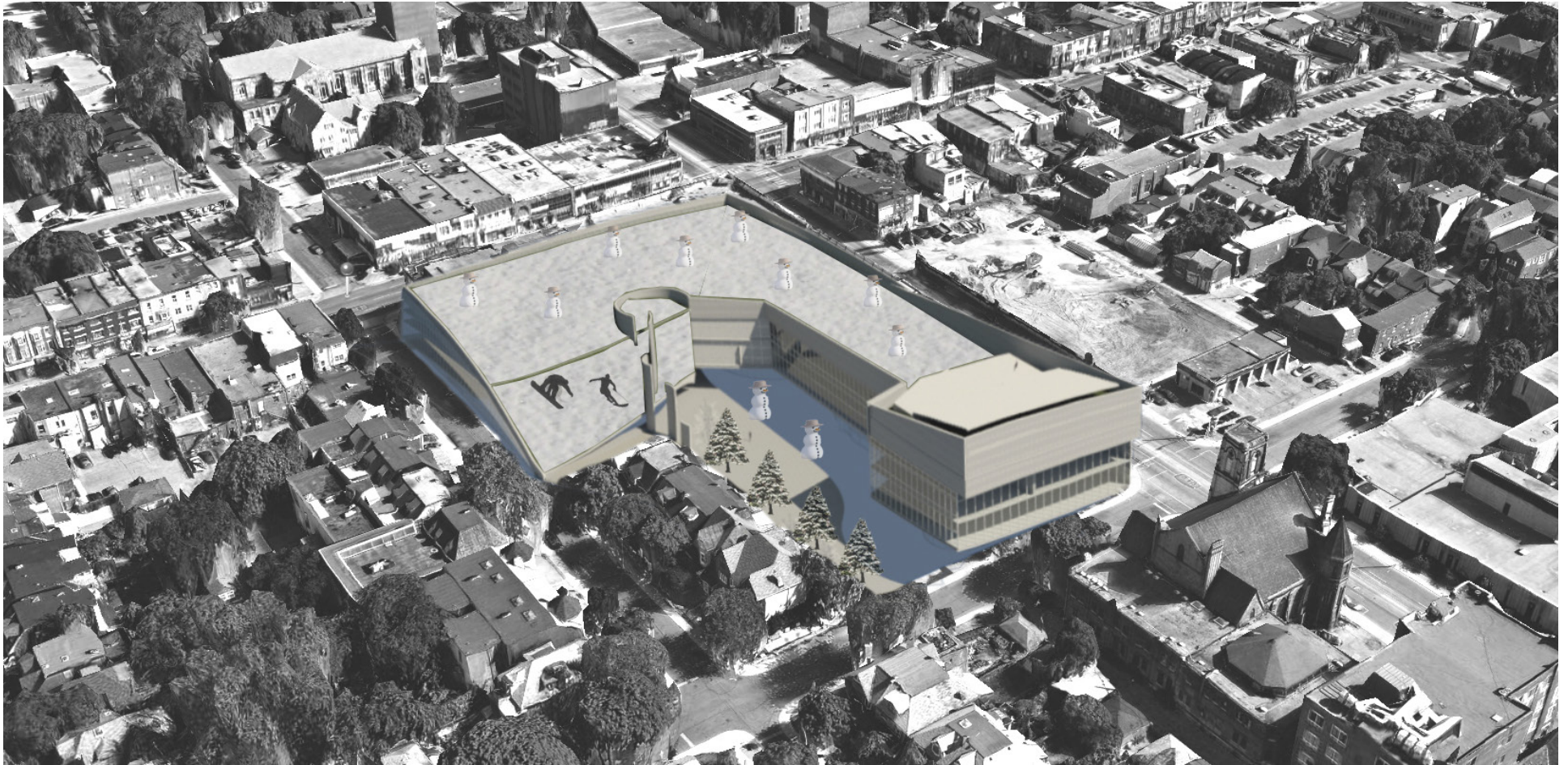




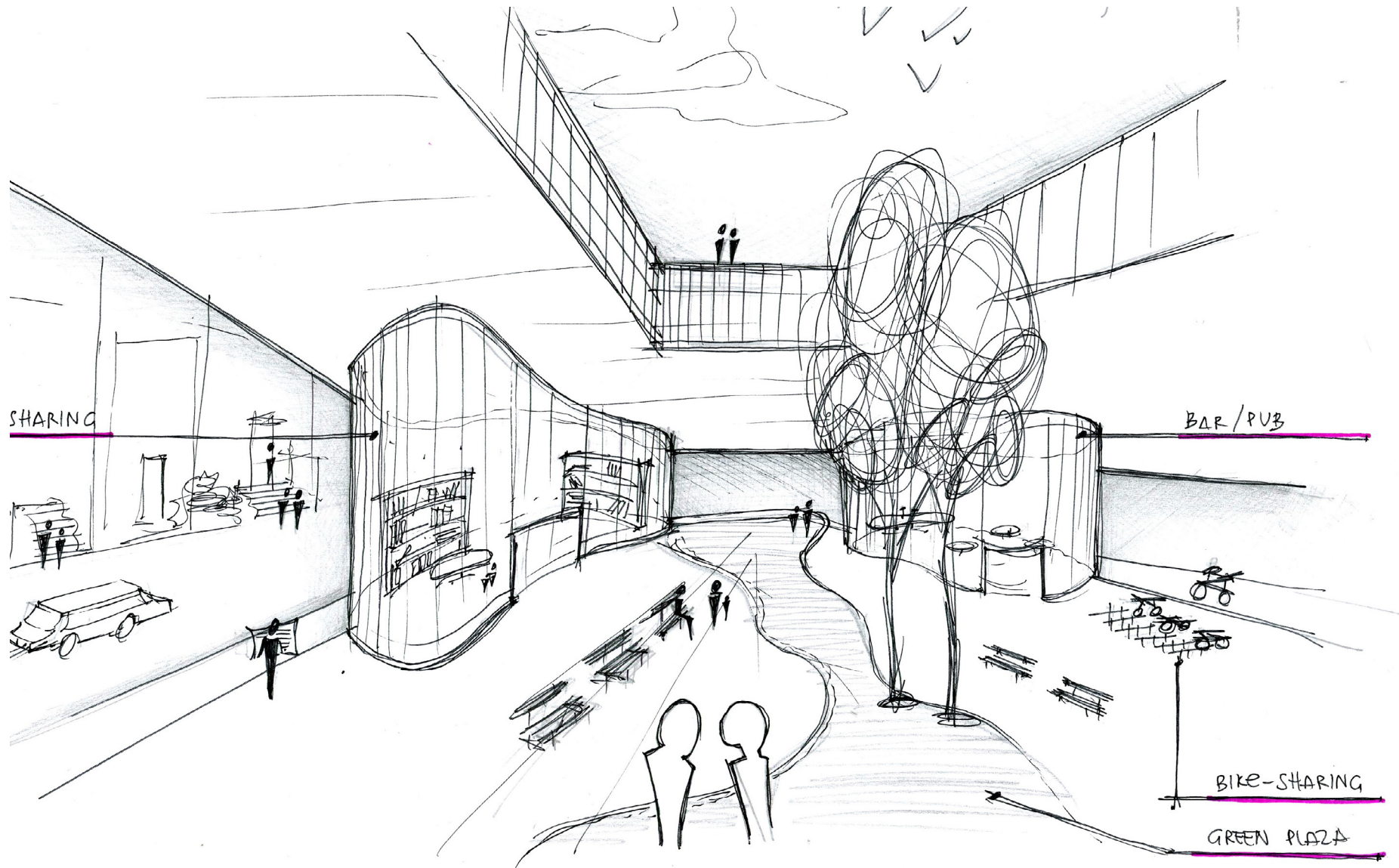


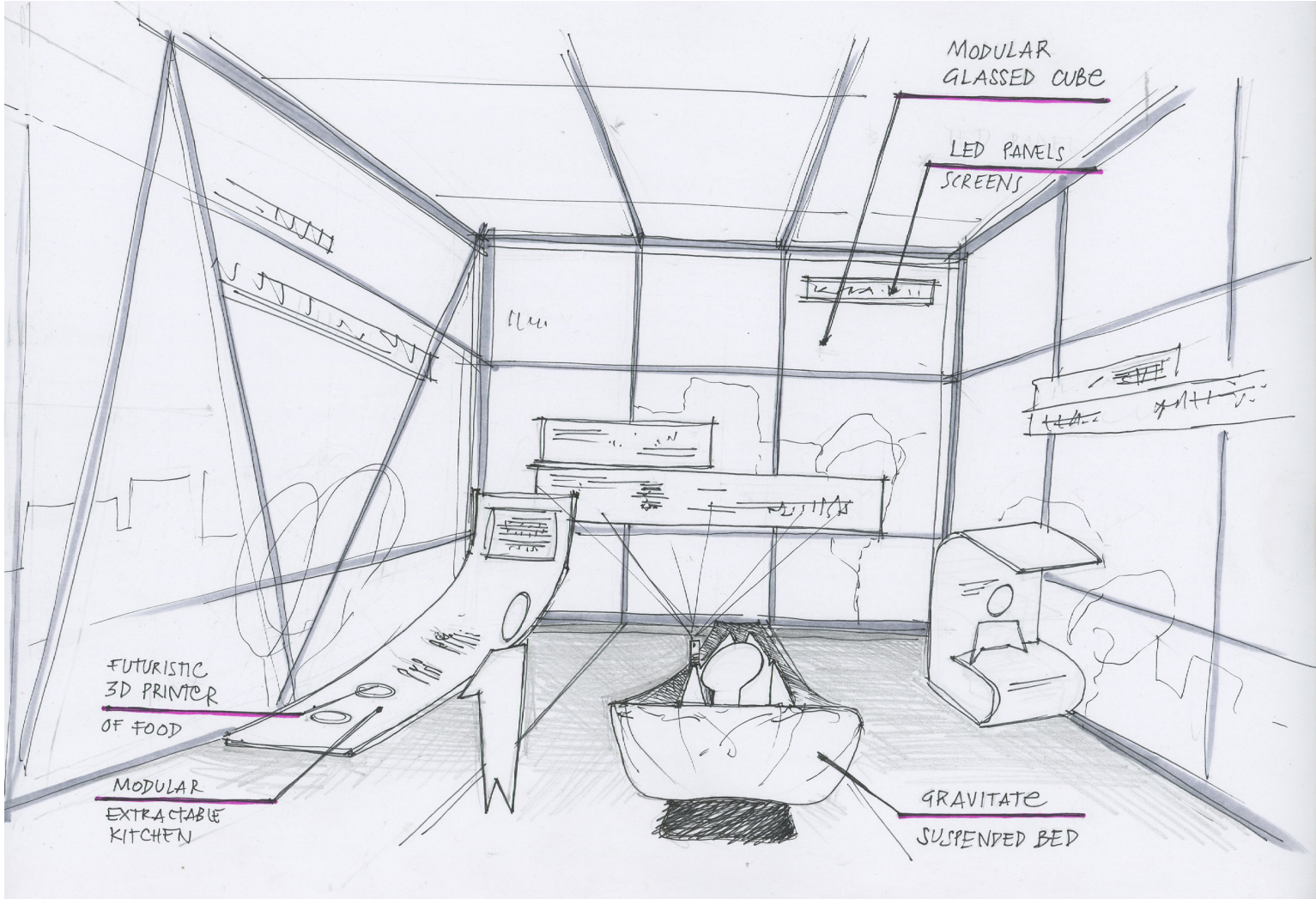
















# SYSTEMS DIAGRAM

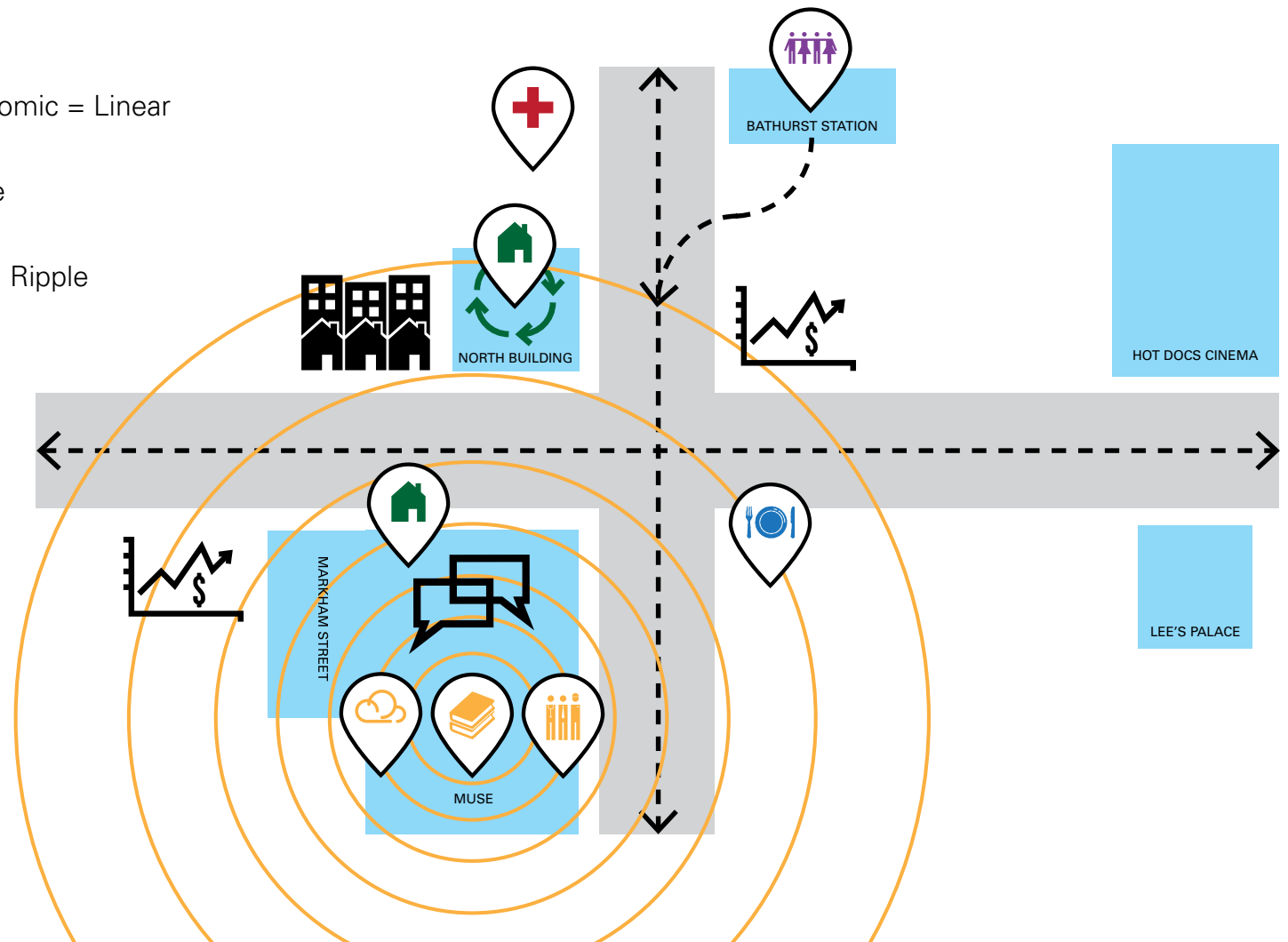
MUSE

This diagram examines how Mirvish Village neighbourhood delivers its vital elements and through which infrastructures. Each combination has a unique effect or influence.

Transportation connection + Economic = Linear

Shelter + Built = Centripetal Force

Pursuit, Air, Knowledge + Social = Ripple



**NATIONAL  
CANADIAN  
BALLET**

JUNE 26 - JULY 15

*MUSE*

TICKETS AVAILABLE AT MUSE.CA

**TORONTO  
FRINGE  
FESTIVAL**

JULY 2 - 13 2025

*MUSE*

TICKETS AVAILABLE AT MUSE.CA

**ROOF TOP  
OPEN MIC  
NIGHT**

EVERY THURSDAY NIGHT  
MAY - AUGUST

*MUSE*

INFO AVAILABLE AT MUSE.CA

PROMOTIONAL

MUSE



## **MUSE CULTURAL HUB:**

- **GROWING WITH THE FUTURE**
- **EXPANDING A CULTURAL DISTRICT**
- **FUTURE PROOFING OF LEGACY**



Hercules Gatilao  
Sam Bullis  
Piotr Biernat  
Aygul Gazizova  
Ottavio Pedretti  
Rashi Sahota  
Giulia Benedetta Costa  
Francesca Anderson  
Nicole Garcia  
Lina Ahmadi  
Ben Coles