



Imagining Iveragh Project #2

— Research and Visitor Centre —

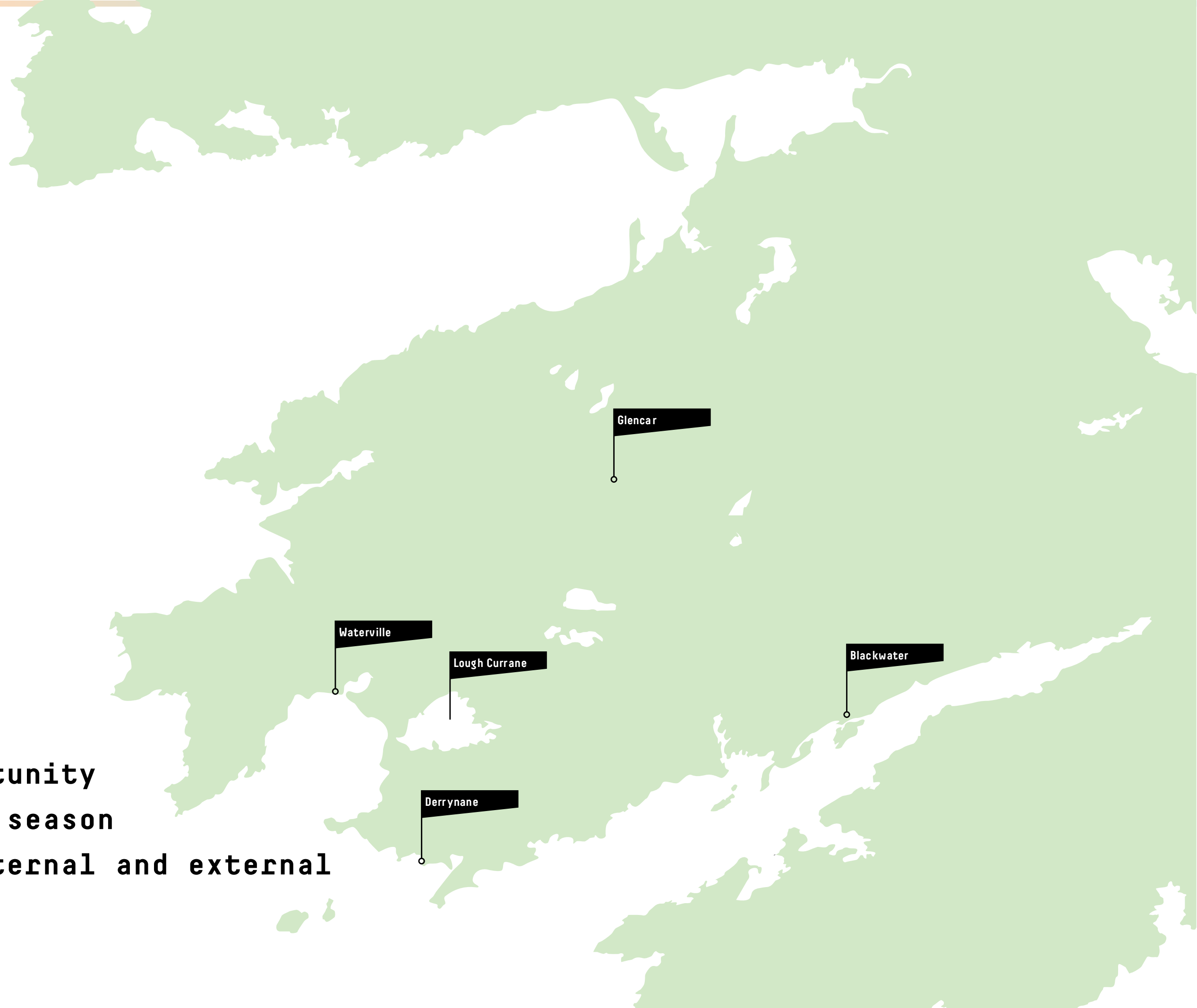
—Assets

- i. Beautiful landscape
- ii. Biodiversity
- iii. Ecodiversity
- iv. International Dark Sky Reserve



—Challenges

- i. Depopulation
- ii. Lack of opportunity
- iii. Short tourism season
- iv. Disconnect internal and external



—Precedents Research

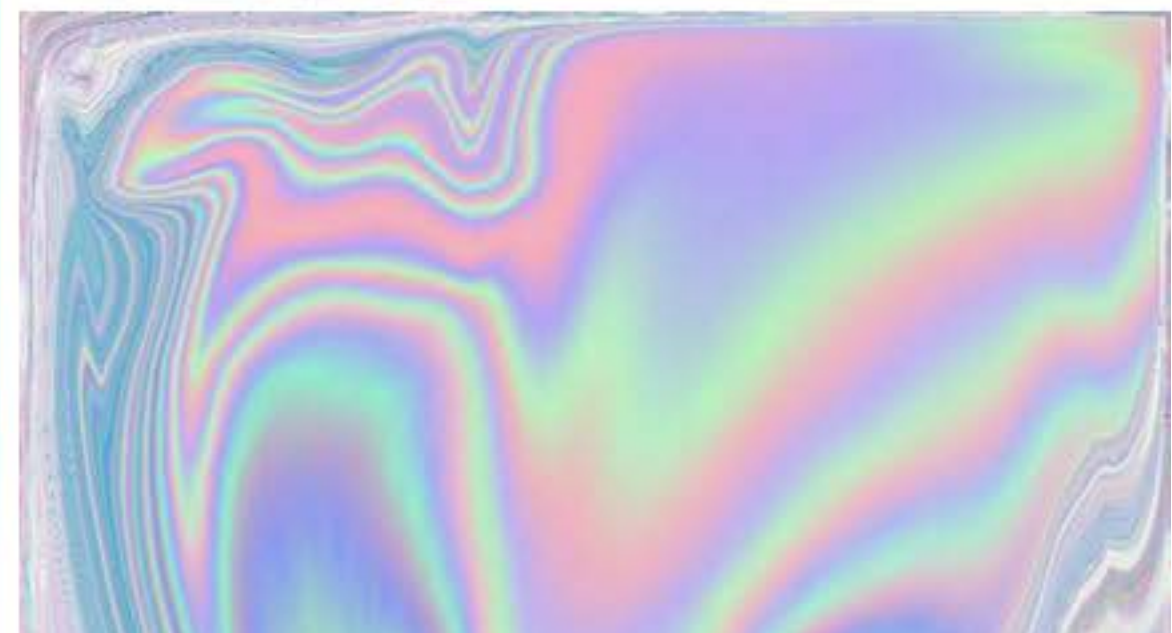
i. Eden Project

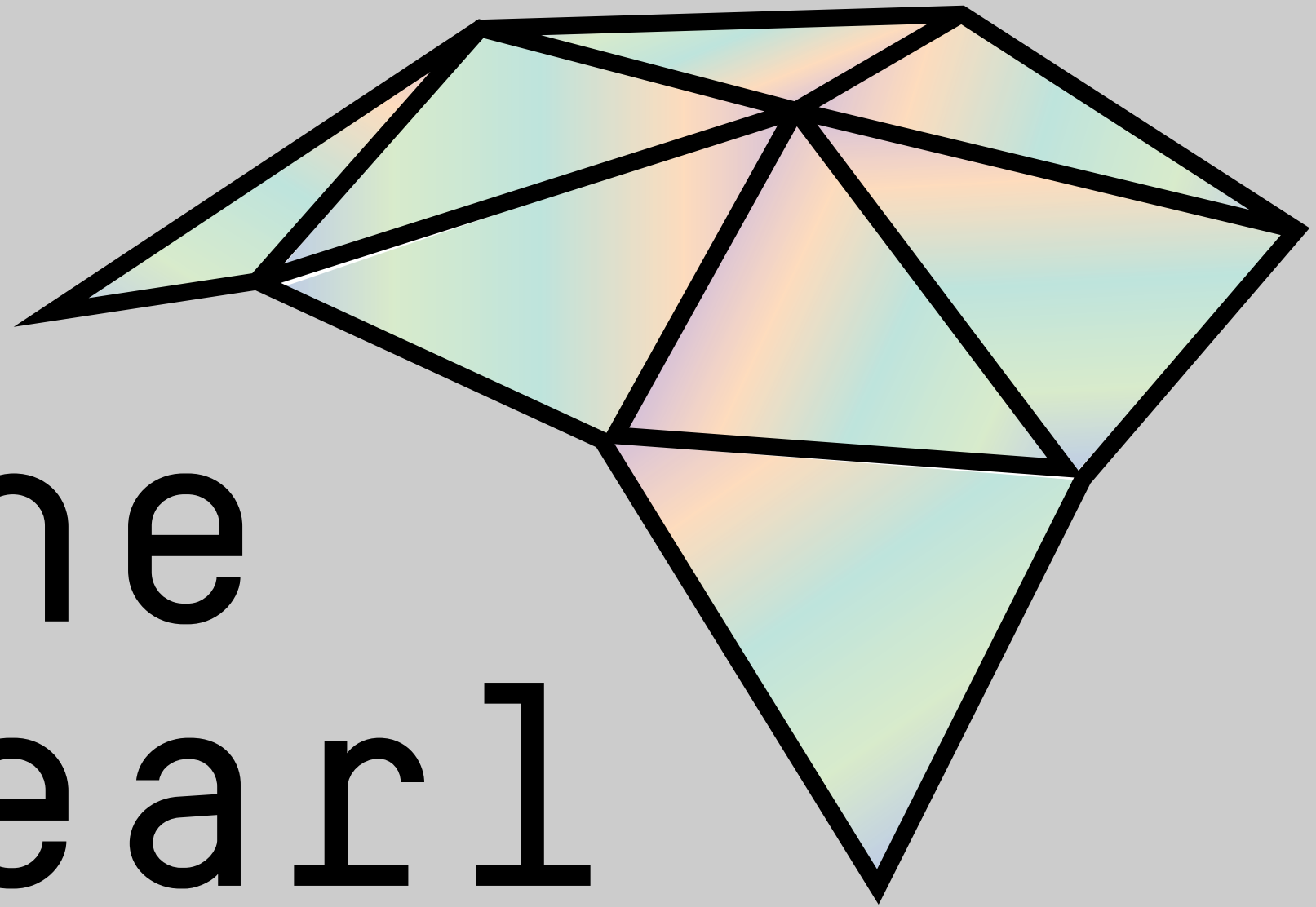


ii. Science City



— Inspiration





The Pearl Project

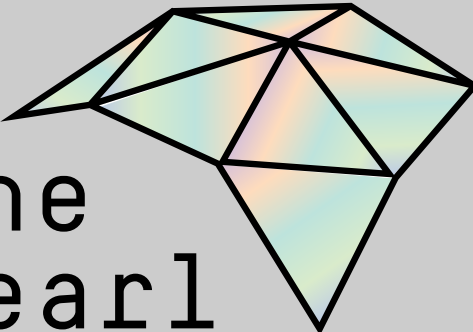


—Vision

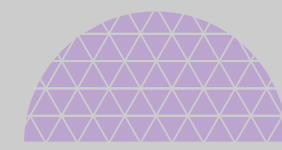
The destination for
innovative research and
learning experiences

—Mission

Linking the existing
assets of the Iveragh
Peninsula to establish
sustainability through
tourism, education and
economic opportunity.

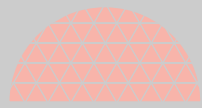


The Pearl Project



Cahersiveen Meta Pearl

- Main Visitor/ Interpretive Centre
- Conference/Theatre
- Planetarium
- Research
- Culture/Heritage Pearl



St. Finian's Bay Black Pearls

- Observatory
- Sleeping Pods



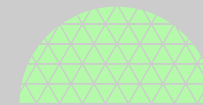
Waterville Aqua Pearl

- Virtual Pearl
- Aquarium
- Bio-diversity
- Boat Tours
- Virtual Exh.



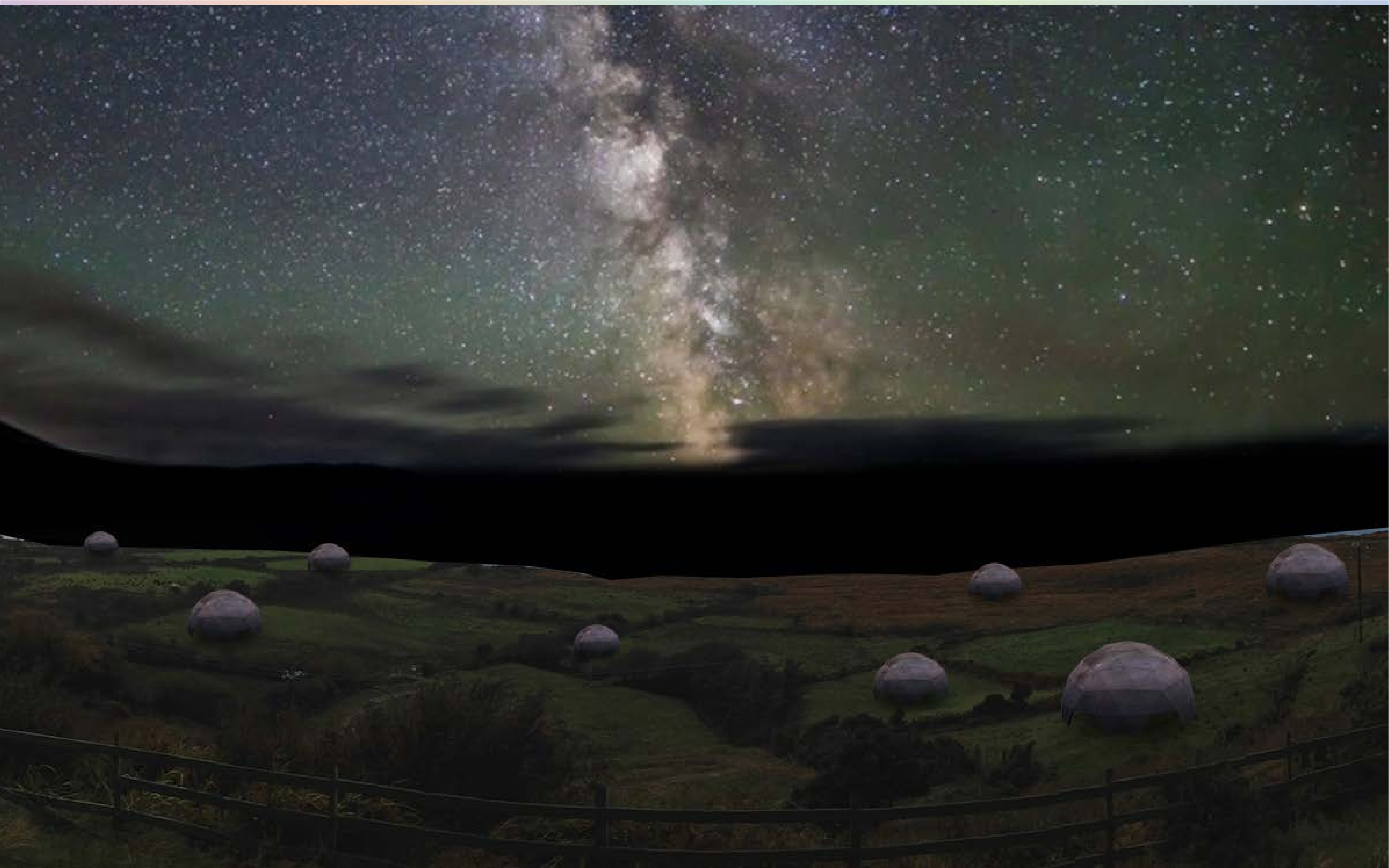
Caherdaniel Bio Pearl

- Virtual Reality Learning
- Interactive Exhibit



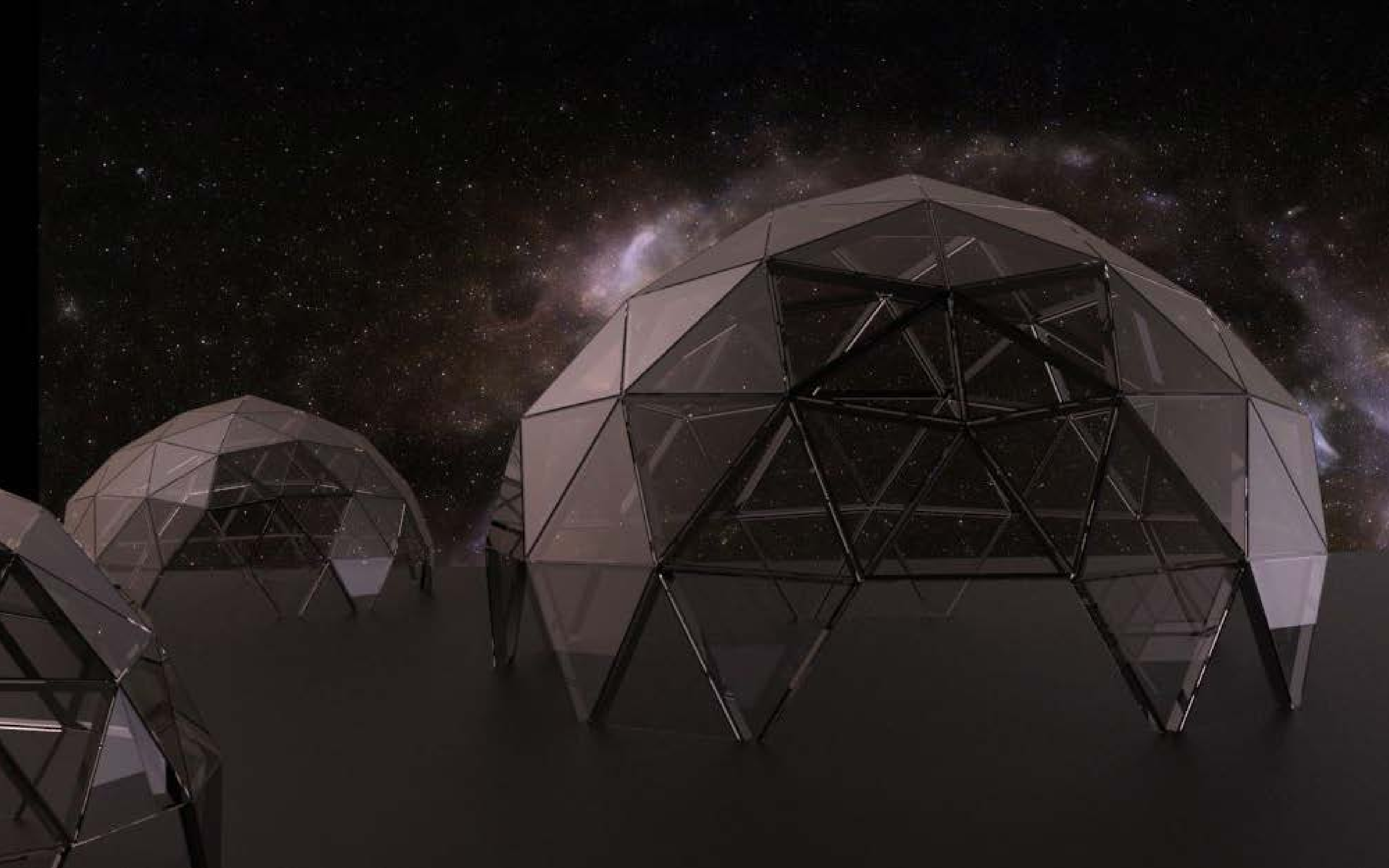
Sneem Geo Pearl

- Geo Park
- Archaeology
- Soil Aquarium
- Simulated Exh.
- Research





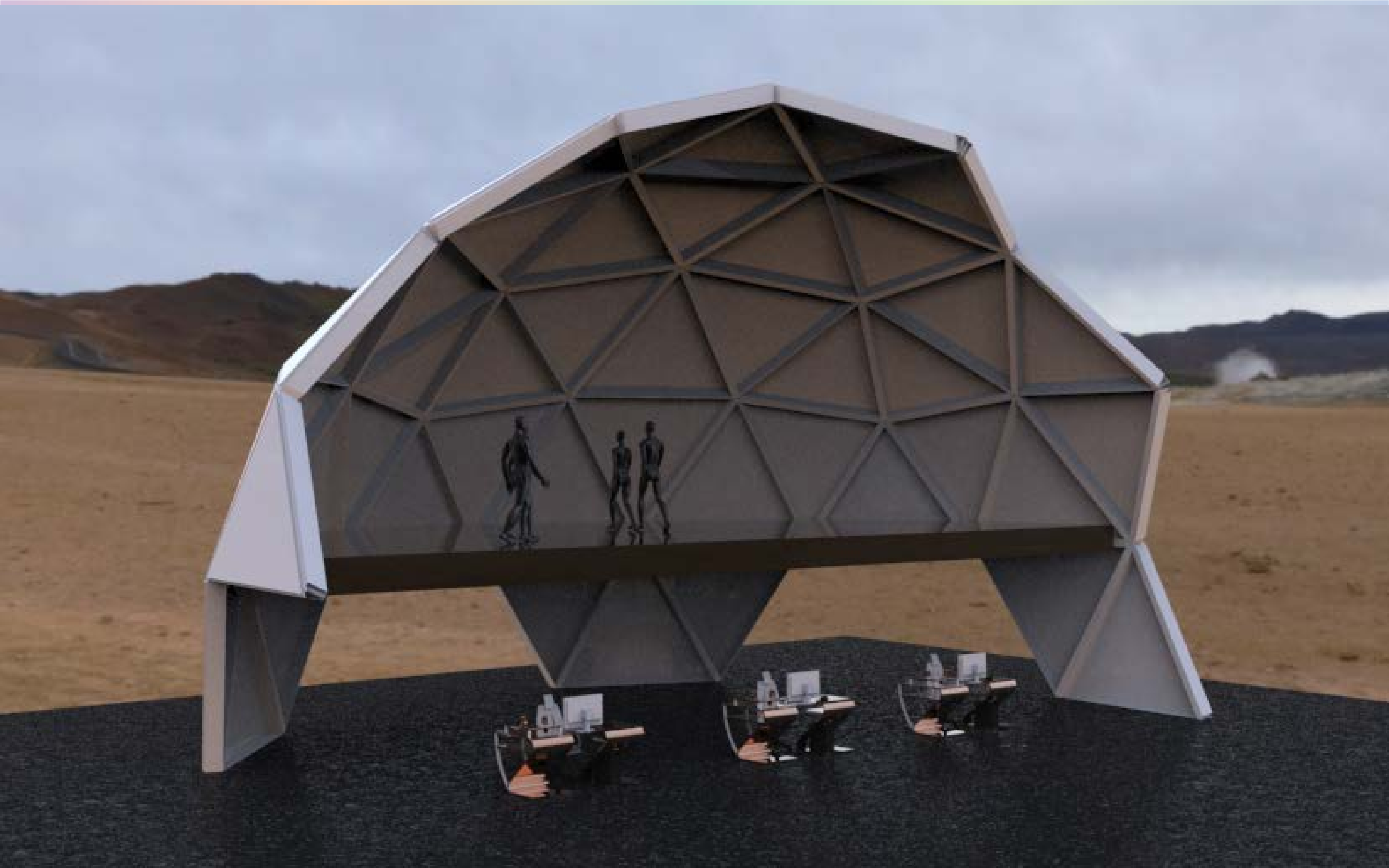




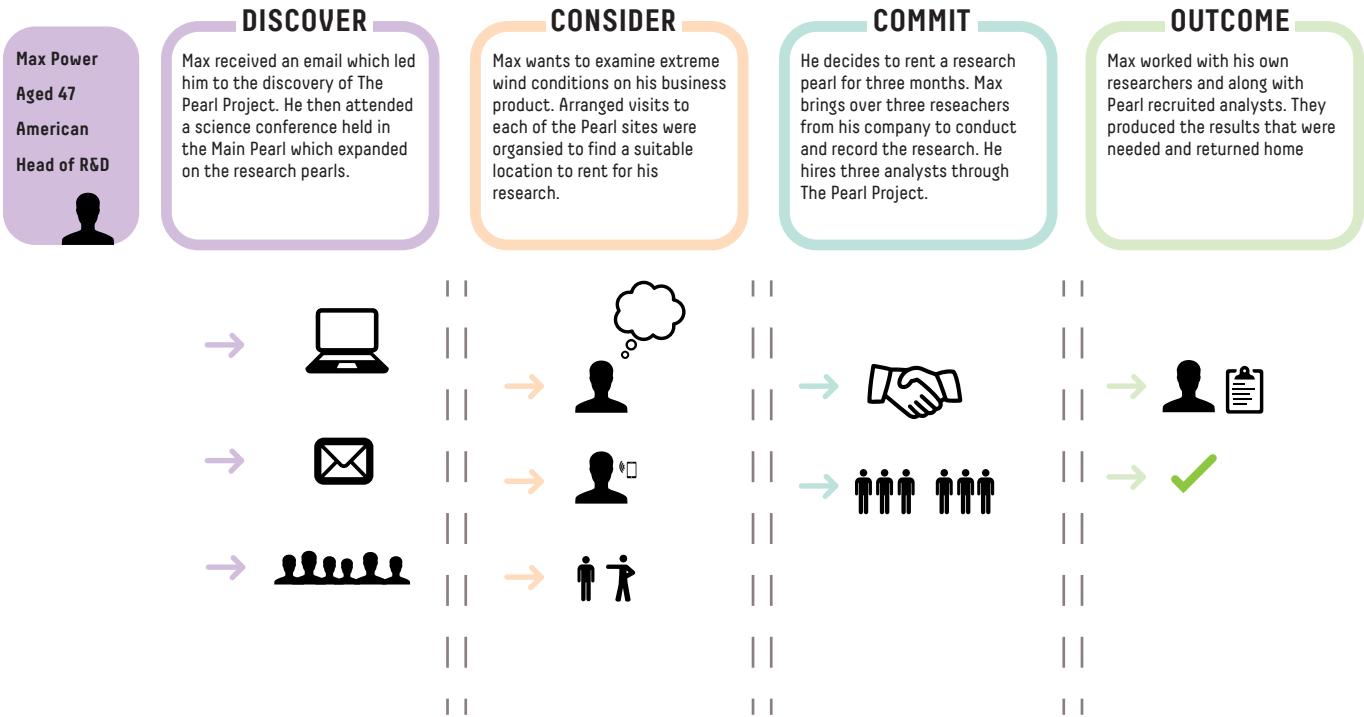




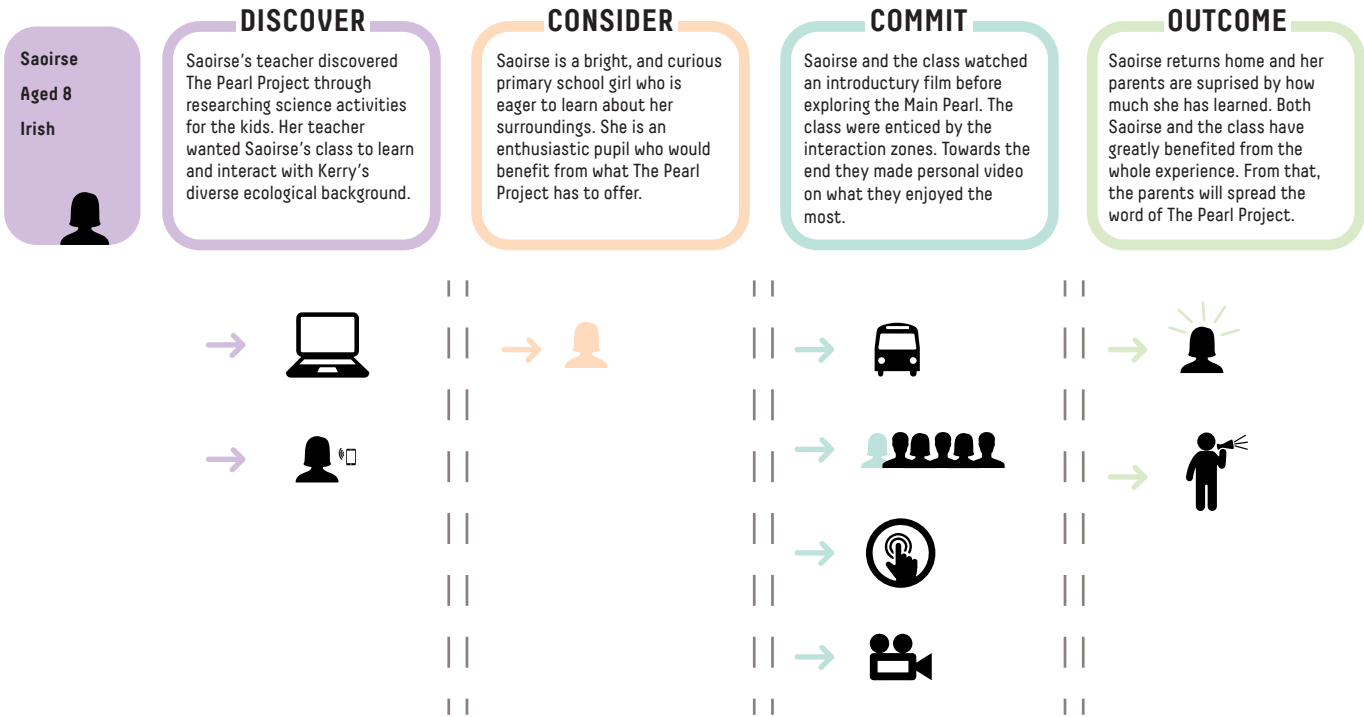




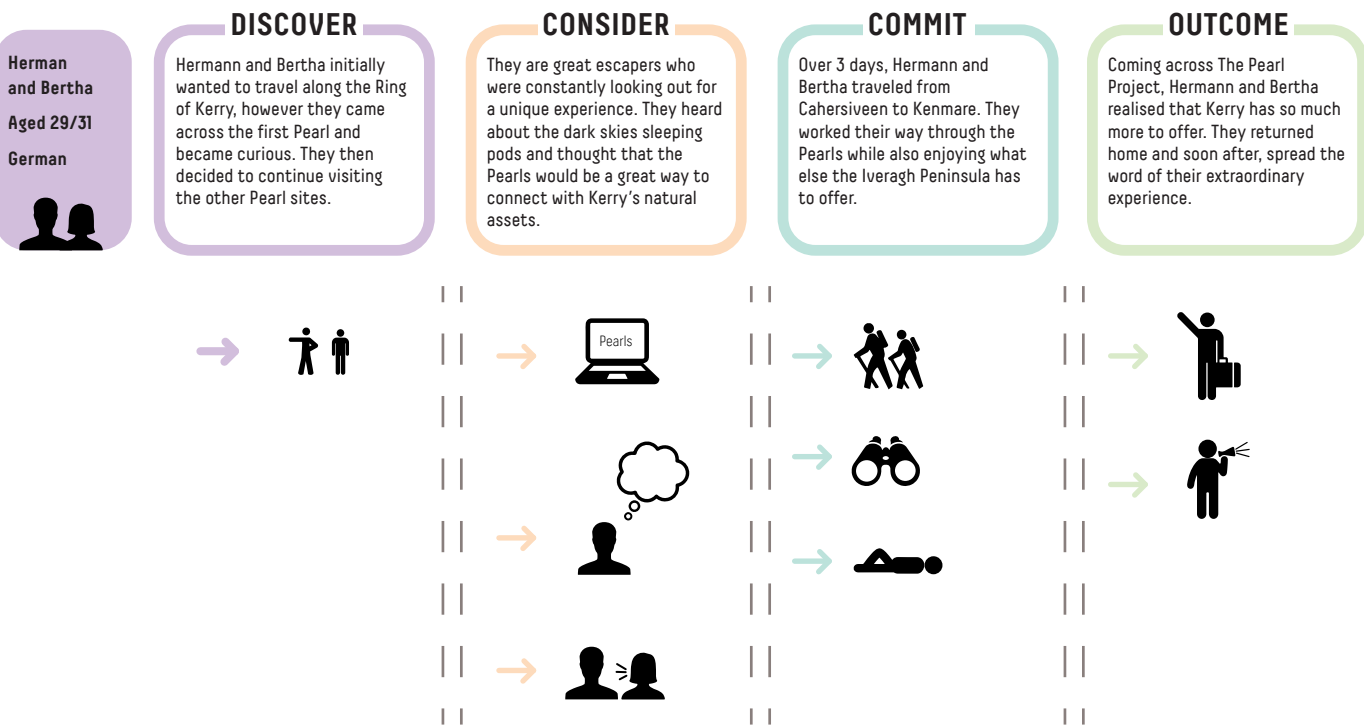
Business
Opportunity



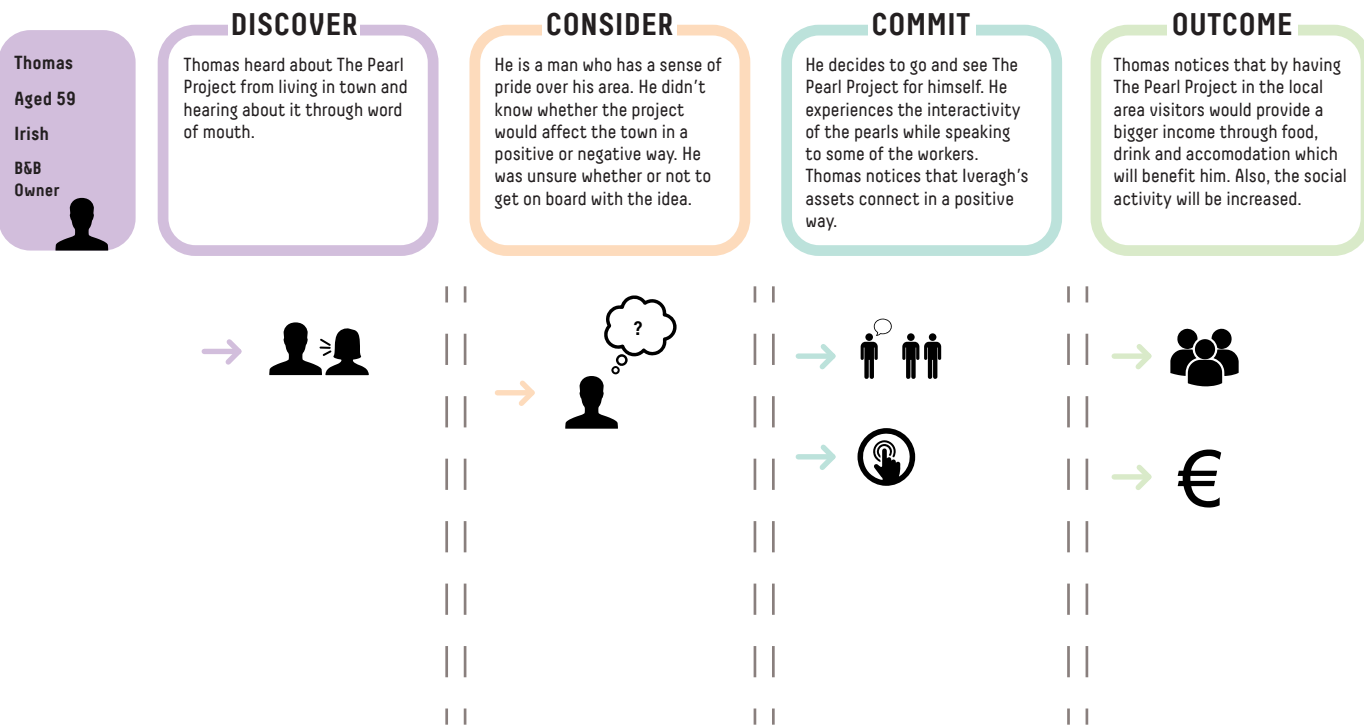
Education
Opportunity



Tourism
Opportunity



Local
Opportunity



—The Success Measures

Two scenarios:

1. 20 year plan without government funding
2. 10 year plan with a government investment of €2M.

With this investment, in 3 years after starting construction, the return on investment ROI will be 85%, or €3.7M.

Getting people off the dole.
Tax revenues (24%) from jobs created.

Instead of paying for residents to be on the dole, invest in the country and the people to see it flourish.



Thank You!